

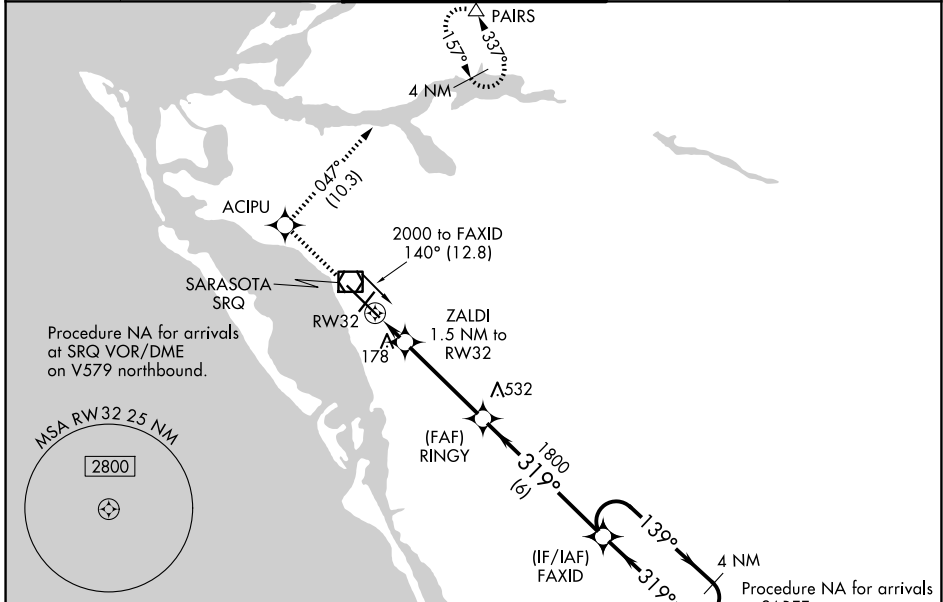
WAAS CH 72605 W32A	APP CRS 319°	Rwy Ldg TDZE Apt Elev	7510 27 30
--	------------------------	-----------------------------	---------------------------------------

RNAV (GPS) RWY 32

SARASOTA/BRADENTON INTL (SRQ)

RNP APCH. ▼ For uncompensated Baro-VNAV systems, LNAV/VNAV NA below -15°C or above 43°C. When control tower closed, LPV and LNAV/VNAV NA; increase LNAV all Cats visibility to 1 mile. When control tower closed, inop table does not apply to LNAV Cats A and B. When control tower closed, for inop MALSRL, increase LNAV Cat C and D visibility to 1½ mile.	MALSRL 	MISSED APPROACH: Climb to 3000 direct ACIPU and on track 047° to PAIRS and hold, continue climb-in-hold to 3000.
---	------------	--

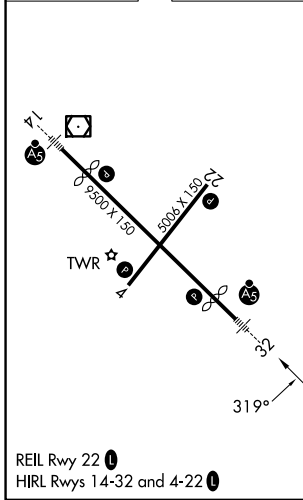
ATIS 124.375	TAMPA APP CON 119.65 353.575	SARASOTA TOWER * 120.1(CTAF) 0 256.8	GND CON 121.9 273.6	UNICOM 122.95
------------------------	--	--	-------------------------------	-------------------------



SE-3, 16 APR 2026 to 14 MAY 2026

SE-3, 16 APR 2026 to 14 MAY 2026

ELEV 30	D	TDZE 27
---------	----------	---------



3000	ACIPU	PAIRS	FAXID	4 NM Holding Pattern
↑		tr 047°		
*LNAV only.	ZALDI 1.5 NM to RW32	RINGY 1800	FAXID 1800	2000
	RW32 540*			GP 3.00° TCH 53
	1.5 NM	3.9 NM	6 NM	
CATEGORY	A	B	C	D
LPV DA		227-½	200 (200-½)	
LNAV/DA VNAV		463-1	436 (500-1)	
LNAV MDA	440-½	413 (500-½)	440-¾	413 (500-¾)
CIRCLING	500-1	470 (500-1)	600-1½	600-2
			570 (600-1½)	570 (600-2)