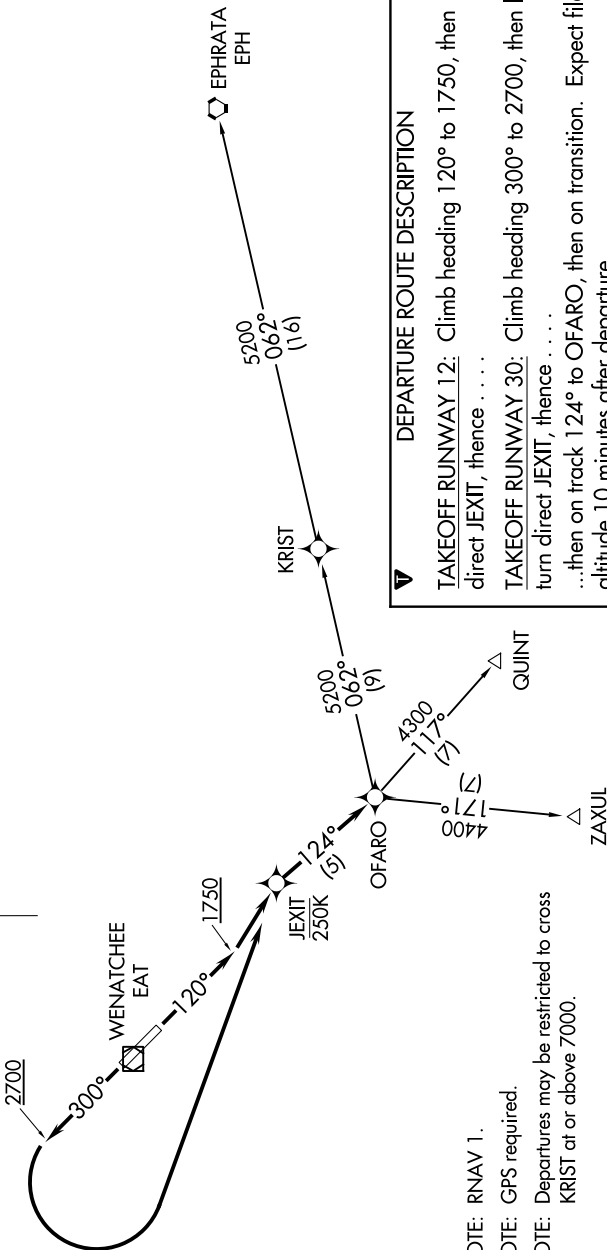


NW-1, 16 APR 2026 to 14 MAY 2026

SEATTLE CENTER
126.1
UNICOM
123.0
ASOS
119.925

(NOTES CONTINUED ON FOLLOWING PAGE)

TOP ALTITUDE:
ASSIGNED BY ATC



DEPARTURE ROUTE DESCRIPTION

TAKEOFF RUNWAY 12: Climb heading 120° to 1750, then direct JEXIT, thence

TAKEOFF RUNWAY 30: Climb heading 300° to 2700, then left turn direct JEXIT, thence

...then on track 124° to OFARO, then on transition. Expect filed altitude 10 minutes after departure.

- EPHRATA TRANSITION (OFARO2.EPH)
- QUINT TRANSITION (OFARO2.QUINT)
- ZAXUL TRANSITION (OFARO2.ZAXUL)

- NOTE: RNAV 1.
- NOTE: GPS required.
- NOTE: Departures may be restricted to cross KRIST at or above 7000.

TAKEOFF MINIMUMS

Rwy 12: Standard with minimum climb of 550' per NM to 3200.
 Rwy 30: Standard with minimum climb of 500' per NM to 4000.

NOTE: Chart not to scale.

NW-1, 16 APR 2026 to 14 MAY 2026