

APP CRS 300°	Rwy Ldg TDZE Apt Elev	7000 1232 1249
------------------------	-----------------------------	---

RNAV (RNP) Z RWY 30

PANGBORN MEML (EAT)

RNP AR APCH - GPS, RF, min RNP 0.30.
Authorization required.

For uncompensated Baro-VNAV systems,
procedure NA below -10°C or above 54°C.

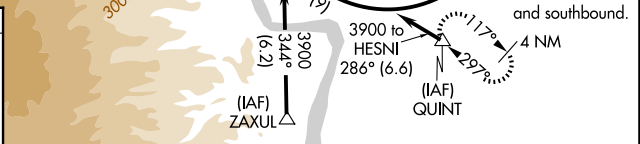
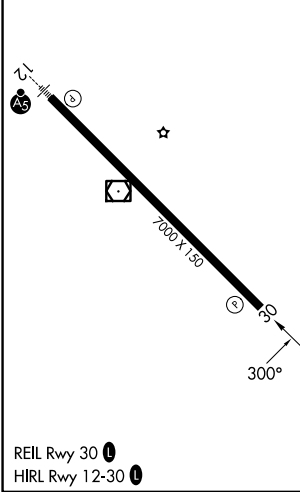
MISSED APPROACH: Climb to 6000 on track 300° to KULOC, right turn to FEXUB, and on track 135° to QUINT and hold.

* Missed approach requires minimum climb of 320 feet per NM to 5500.
Missed approach requires minimum climb of 325 feet per NM to 5500.

ASOS 119.925	SEATTLE CENTER 126.1	UNICOM 123.0 (CTAF)
------------------------	--------------------------------	-------------------------------



ELEV 1249	D	TDZE 1232
-----------	----------	-----------



6000	KULOC	FEXUB	tr 135°	QUINT	HESNI
tr 300°					
RW30	YURLU	CUKSI	DOOGI	3000	3900
1979	2411				
300°	318°	3000			GP 3.60°
1.8 NM	1.1 NM	1.5 NM	5.5 NM		TCH 60

CATEGORY	A	B	C	D
RNP 0.17 DA*	1595-1		363 (400-1)	
RNP 0.30 DA#	1762-1½		530 (600-1½)	
				NA

AUTHORIZATION REQUIRED

NW-1, 16 APR 2026 to 14 MAY 2026

NW-1, 16 APR 2026 to 14 MAY 2026