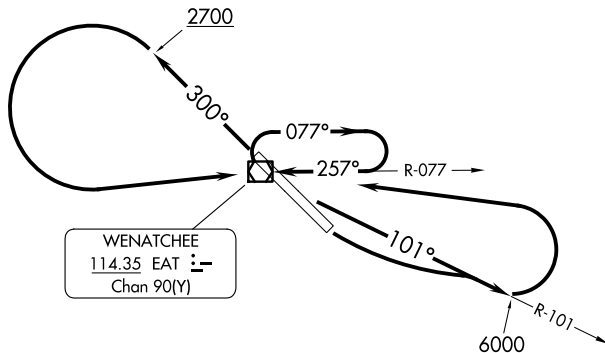


WENATCHEE TWO DEPARTURE (OBSTACLE)

SEATTLE CENTER
126.1
ASOS
119.925
UNICOM
123.0



TAKEOFF MINIMUMS

Rwy 12: Standard with minimum climb of 575' per NM to 3300 or 3500-3 for VCOA.
Rwy 30: Standard with minimum climb of 500' per NM to 3500 or 3500-3 for VCOA.

(NOTES CONTINUED ON FOLLOWING PAGE)

NOTE: Chart not to scale.

DEPARTURE ROUTE DESCRIPTION

TAKEOFF RUNWAY 12: Climbing left turn to 6000 to intercept EAT VOR/DME R-101 eastbound, thence

TAKEOFF RUNWAY 30: Climb heading 300° to 2700, then climbing left turn to 6000 direct EAT VOR/DME, then on EAT VOR/DME R-101 eastbound, thence

. . . . leaving 6000, turn left direct EAT VOR/DME. Climb-in-holding pattern to cross EAT VOR/DME at or above the MCA/MEA for direction of flight.

VCOA ALL RUNWAYS: Obtain ATC approval for VCOA when requesting IFR clearance. Climb in visual conditions to cross EAT VOR/DME at or above 4600. Climb-in-holding pattern to cross EAT VOR/DME at or above the MCA/MEA for direction of flight.

NW-1, 16 APR 2026 to 14 MAY 2026

NW-1, 16 APR 2026 to 14 MAY 2026

WENATCHEE TWO DEPARTURE (OBSTACLE)

TAKEOFF OBSTACLE NOTES

- Rwy 12: Terrain 25' from DER, 194' left of centerline, 1234' MSL.
 Sign 68' from DER, 474' left of centerline, 1237' MSL.
 Building beginning 133' from DER, 399' right of centerline, up to 19' AGL/1237' MSL.
 Terrain 171' from DER, 340' left of centerline, 1241' MSL.
 Terrain 317' from DER, 486' left of centerline, 1247' MSL.
 Agricultural equipment 435' from DER, 575' left of centerline, 37' AGL/1260' MSL.
 Tree 1190' from DER, 815' left of centerline, 1301' MSL.
- Rwy 30: Terrain 66' from DER, 411' right of centerline, 1219' MSL.
 Vehicles on road, 201' from DER, 535' left of centerline, 1224' MSL.
 Transmission tower 304' from DER, 274' left of centerline, 42' AGL/1253' MSL.
 Building 1185' from DER, 480' right of centerline, 40' AGL/1247' MSL.
 Terrain beginning 1.4 NM from DER, 2496' right of centerline, up to 1518' MSL.
 Terrain 1.4 NM from DER, 2729' right of centerline, 1546' MSL.
 Pole 1.4 NM from DER, 2257' right of centerline, 43' AGL/1574' MSL.
 Terrain beginning 1.4 NM from DER, 2490' right of centerline, up to 1586' MSL.
 Terrain beginning 1.5 NM from DER, 410' right of centerline, up to 1606' MSL.
 Terrain beginning 1.5 NM from DER, 136' right of centerline, up to 1651' MSL.
 Terrain 1.5 NM from DER, 10' left of centerline, 1449' MSL.
 Terrain beginning 1.5 NM from DER, 402' right of centerline, up to 1670' MSL.
 Transmission tower, pole, and terrain beginning 1.5 NM from DER, 820' right of centerline, up to 65' AGL/1666' MSL.
 Terrain beginning 1.5 NM from DER, 1252' right of centerline, up to 1672' MSL.
 Terrain beginning 1.5 NM from DER, 521' right of centerline, up to 1682' MSL.
 Terrain, transmission tower, and pole beginning 1.6 NM from DER, 80' right of centerline, up to 1690' MSL.
 Transmission tower, pole, and terrain beginning 1.8 NM from DER, 186' left of centerline, up to 65' AGL/1590' MSL.
 Terrain 1.9 NM from DER, 1516' right of centerline, 1565' MSL.

NW-1, 16 APR 2026 to 14 MAY 2026

NW-1, 16 APR 2026 to 14 MAY 2026