

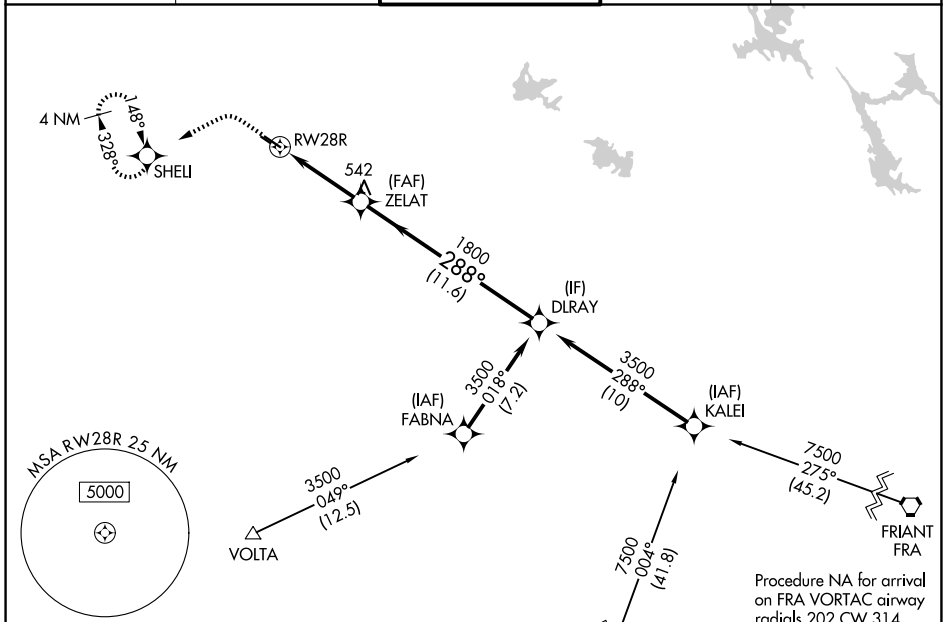
WAAS CH 70609 W28A	APP CRS 288°	Rwy Ldg TDZE Apt Elev	5904 91 99
--	------------------------	-----------------------------	---------------------------------------

RNAV (GPS) RWY 28R

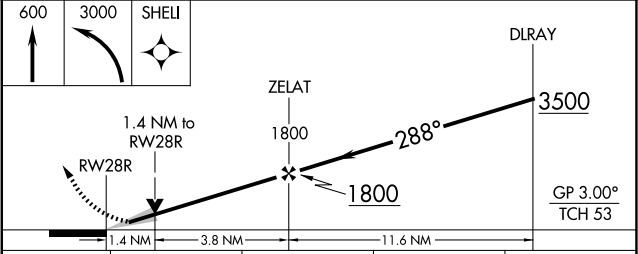
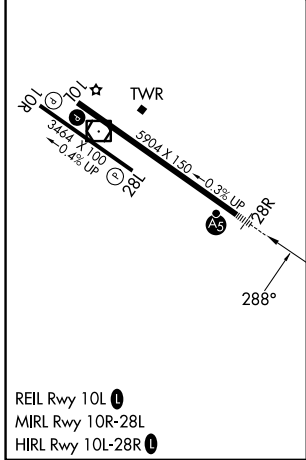
MODESTO CITY-COUNTY-HARRY SHAM FLD (MOD)

RNP APCH - GPS.	MALSR	MISSED APPROACH: Climb to 600 then climbing left turn to 3000 direct SHELI and hold, continue climb-in-hold to 3000.
<p>⚠ Circling Rwy 10R, 28L NA at night. For uncompensated Baro-VNAV systems, LNAV/VNAV NA below -1°C or above 54°C.</p>		

ATIS 127.7	NORCAL APP CON 120.95 269.45	MODESTO TOWER* 125.3 (CTAF) 0 257.8	GND CON 121.7	UNICOM 122.95
----------------------	--	---	-------------------------	-------------------------



ELEV 99	D TDZE 91
---------	------------------



CATEGORY	A	B	C	D
LPV DA		341-½	250 (300-½)	
LNAV/VNAV DA		526-¾	435 (500-¾)	
LNAV MDA	580-½	489 (500-½)	580-1	489 (500-1)
CIRCLING	580-1 481 (500-1)	600-1 501 (600-1)	640-1¾ 541 (600-1¾)	820-2½ 721 (800-2½)

SW-2, 16 APR 2026 to 14 MAY 2026

SW-2, 16 APR 2026 to 14 MAY 2026