

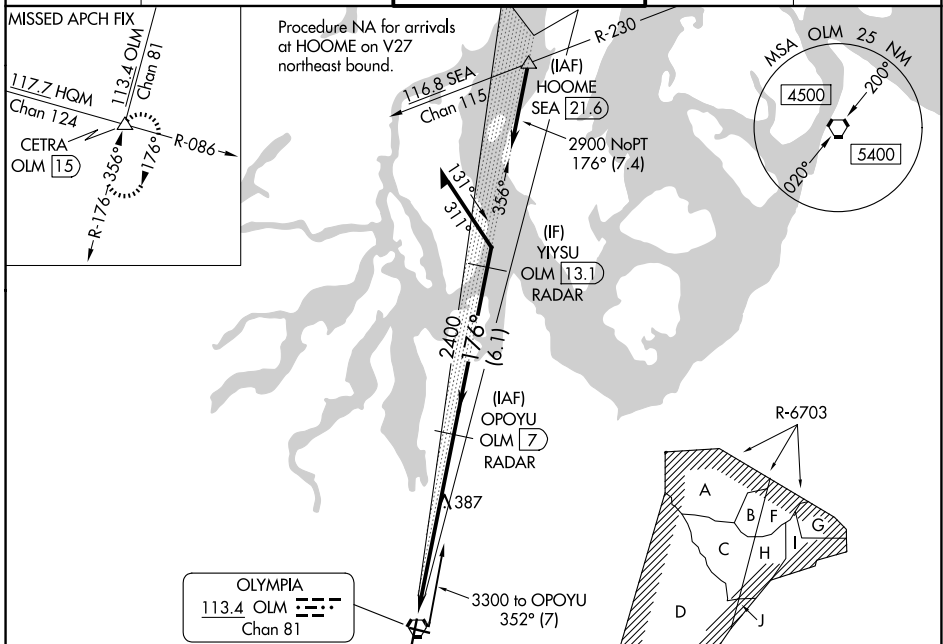
LOC I-OLM 111.9	APP CRS 176°	Rwy Ldg 5500
		TDZE 207
		Apt Elev 208

ILS or LOC RWY 17

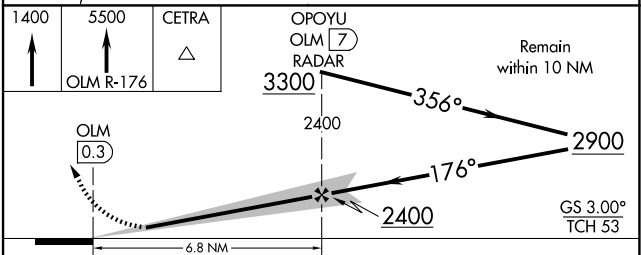
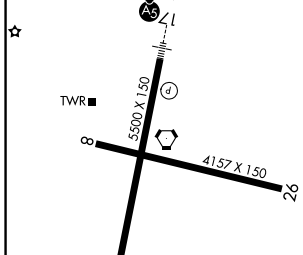
OLYMPIA RGNL (OLM)

<p>DME or RADAR required. For inop ALS, increase S-LOC 17 Cat C/D visibility to 1 3/8 SM.</p>	<p>MALS</p>	<p>MISSED APPROACH: Climb to 1400 then climb to 5500 on OLM VORTAC R-176 to CETRA INT/OLM 15 DME and hold, continue climb-in-hold to 5500.</p>

ATIS 135.725	SEATTLE APP CON 121.1 290.9	OLYMPIA TOWER* 124.4(CTAF) 254.25	GND CON 121.6	UNICOM 122.95
------------------------	---------------------------------------	---	-------------------------	-------------------------



ELEV 208	TDZE 207
----------	----------



FAF to MAP 6.8 NM					
Knots	60	90	120	150	180
Min:Sec	6:48	4:32	3:24	2:43	2:16
CATEGORY	A	B	C	D	
S-ILS 17	407-1/2 200 (200-1/2)				
S-LOC 17	680-1/2	473 (500-1/2)	680-1	473 (500-1)	
CIRCLING	720-1 512 (600-1)	860-1 652 (700-1)	1020-2 1/2 812 (900-2 1/2)	1020-2 3/4 812 (900-2 3/4)	

NW-1, 16 APR 2026 to 14 MAY 2026

NW-1, 16 APR 2026 to 14 MAY 2026