

VORTAC OLM 113.4 Chan 81	APP CRS 356°	Rwy Ldg 5500 TDZE 208 Apt Elev 208
--	------------------------	---

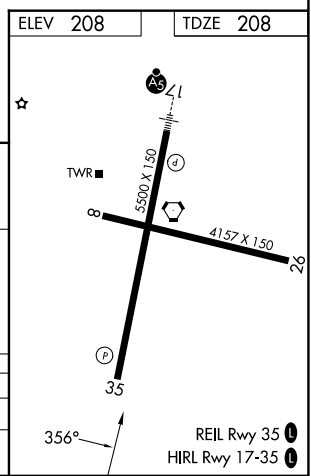
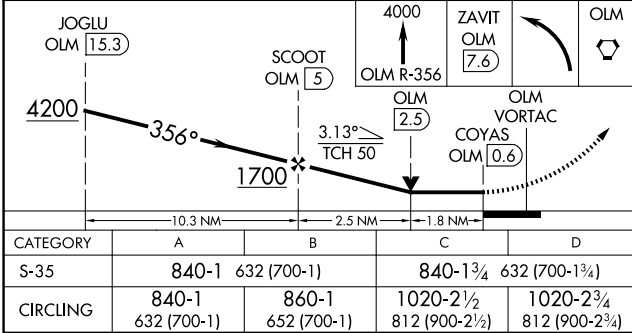
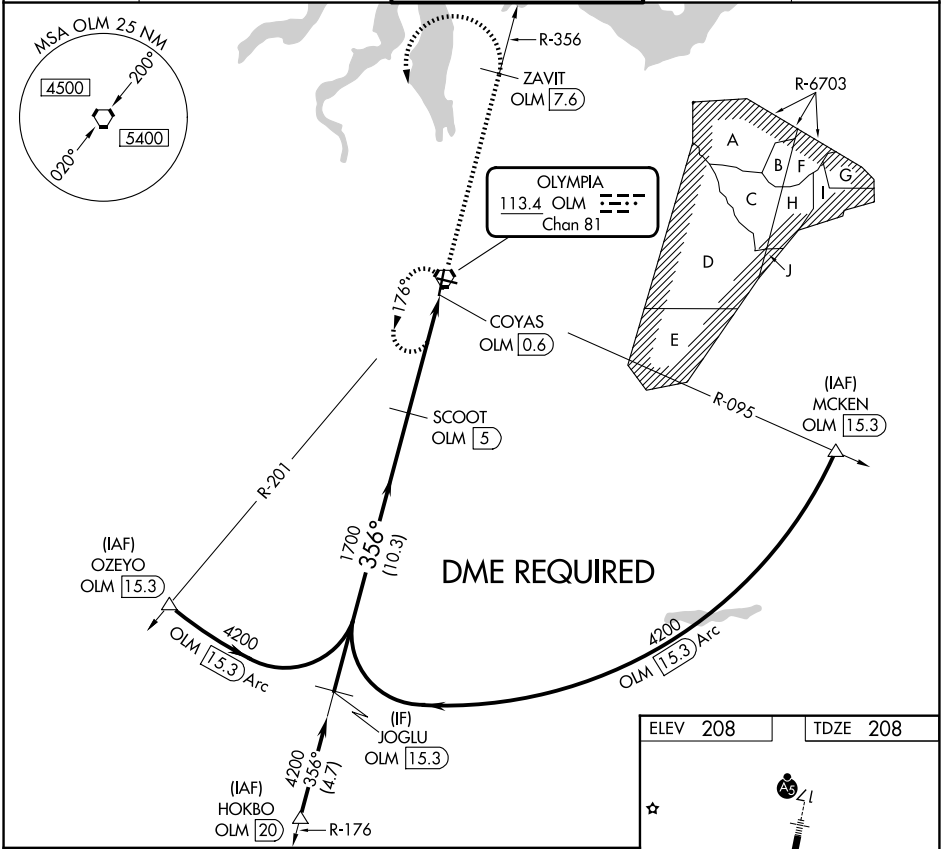
VOR RWY 35

OLYMPIA RGNL (OLM)

▼ Rwy 35 helicopter visibility reduction below 3/4 SM NA.
▲ DME required.

MISSED APPROACH: Climb to 4000 on OLM VORTAC
 R-356 to ZAVIT/OLM 7.6 DME then climbing left turn
 direct OLM VORTAC and hold.

ATIS 135.725	SEATTLE APP CON 121.1 290.9	OLYMPIA TOWER* 124.4 (CTAF) 0 254.25	GND CON 121.6	UNICOM 122.95
------------------------	---------------------------------------	--	-------------------------	-------------------------



NW-1, 16 APR 2026 to 14 MAY 2026

NW-1, 16 APR 2026 to 14 MAY 2026