

(YELM5.YELM) 23334

# YELM FIVE DEPARTURE

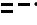
AL-645 (FAA)


OLYMPIA RGNL (OLM)  
OLYMPIA, WASHINGTON

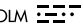
OLYMPIA TOWER \*  
124.4 (CTAF) 254.25  
SEATTLE DEP CON  
121.1 290.9

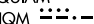
**TOP ALTITUDE:  
3000**

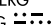
TATOOSH  
112.2 TOU   
Chan 59

PAINÉ  
110.6 PAE   
Chan 43

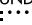
SEATTLE  
116.8 SEA   
Chan 115

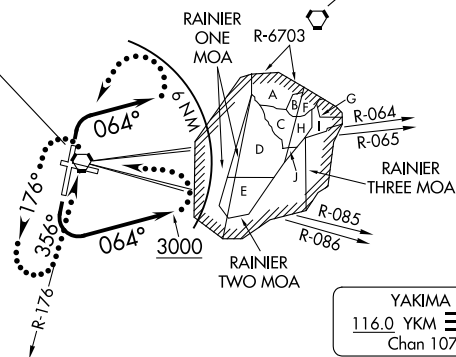
OLYMPIA  
113.4 OLM   
Chan 81

HOQUIAM  
117.7 HQM   
Chan 124

NEWBERG  
117.4 UBG   
Chan 121

YAKIMA  
116.0 YKM   
Chan 107

BATTLE GROUND  
116.6 BTG   
Chan 113



### TAKEOFF MINIMUMS

Rwys 8, 26: NA- ATC.

Rwy 17: 300-2 with minimum climb of 210' per NM to 2200 or standard with minimum climb of 720' per NM to 500.

Rwy 35: Standard.

NOTE: RADAR required.

NOTE: Chart not to scale.



### DEPARTURE ROUTE DESCRIPTION

TAKEOFF RUNWAY 17: Turn left, climb heading 064° to 3000, thence. . . .

TAKEOFF RUNWAY 35: Turn right, climb heading 064°, maintain 3000 thence. . . .

. . . .for RADAR vectors on course and filed altitude.

LOST COMMUNICATIONS: If no contact with ATC within 6 NM of OLM VORTAC, or 2 minutes after departure for non-DME aircraft, turn left direct OLM VORTAC, continue climb in OLM VORTAC holding pattern to cross OLM VORTAC at or above R-086 CW R-064 4200 feet; R-065 CW R-085 7300 feet, continue climb on assigned route.

# YELM FIVE DEPARTURE

(YELM5.YELM) 19JUL18

OLYMPIA, WASHINGTON  
OLYMPIA RGNL (OLM)

NW-1, 16 APR 2026 to 14 MAY 2026

NW-1, 16 APR 2026 to 14 MAY 2026