

WAAS CH 81915 W23A	APP CRS 231°	Rwy Ldg 5395 TDZE 721 Apt Elev 721
--	------------------------	---

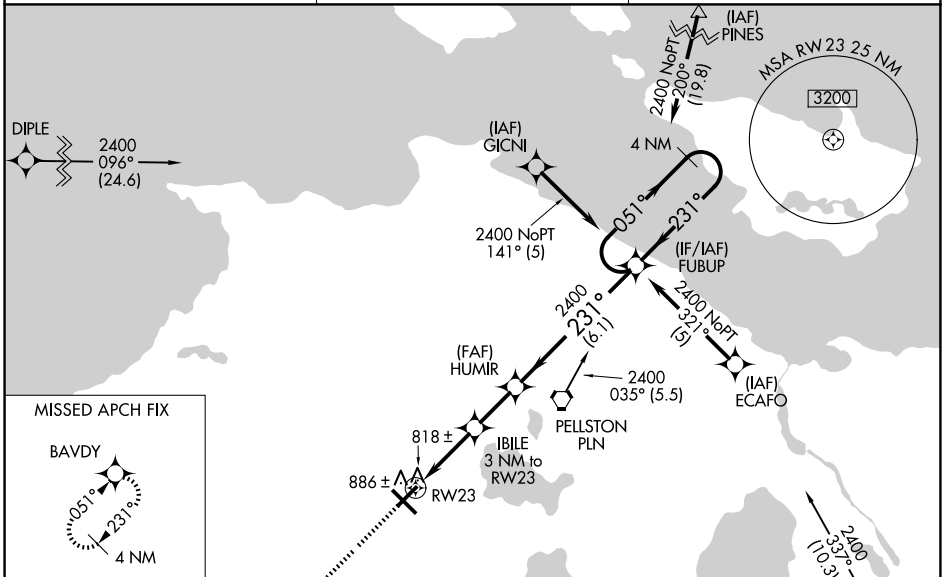
RNAV (GPS) RWY 23

PELLSTON RGNL/EMMET COUNTY (PLN)

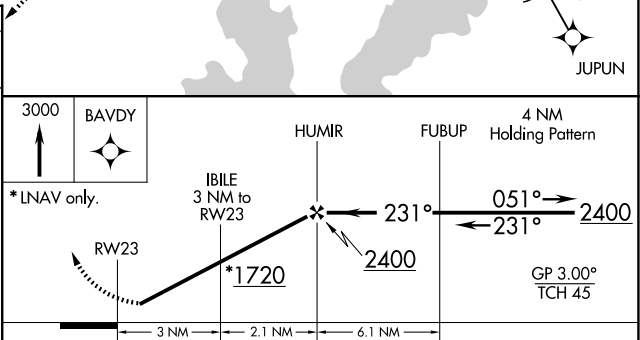
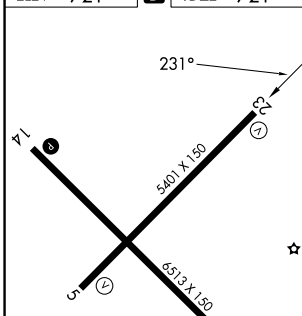
⚠ Baro-VNAV NA when using Harbor Springs altimeter setting. For uncompensated Baro-VNAV systems, LNAV/VNAV NA below -16°C (4°F) or above 47°C (116°F). DME/DME RNP-0.3 NA. Rwy 23 helicopter visibility reduction below 3/4 SM NA. When local altimeter setting not received, use Harbor Springs altimeter setting; increase LPV DA to 1087 feet, LNAV/VNAV DA to 1139 feet and all visibilities 1/2 SM; increase all MDA 40 feet. Circling Rwy 5, 14, 23 NA at night.

MISSED APPROACH:
Climb to 3000 direct
BAVDY and hold.

ASOS 119.025	MINNEAPOLIS CENTER 134.6 354.05	UNICOM 123.0 (CTAF) 0
------------------------	---	---------------------------------



ELEV 721	D	TDZE 721
----------	----------	----------



CATEGORY	A	B	C	D
LPV DA		1057-1¼	336 (400-1¼)	
LNAV/VNAV DA		1109-1¼	388 (400-1¼)	
LNAV MDA	1240-1	519 (600-1)	1240-1½ 519 (600-1½)	1240-1¾ 519 (600-1¾)
CIRCLING	1280-1 559 (600-1)	1320-1 599 (600-1)	1560-2½ 839 (900-2½)	1660-3 939 (1000-3)

HIRL Rwy 14-32 **0**
MIRL Rwy 5-23 **0**
REIL Rwy 5, 14, and 23 **0**