

WAAS CH 77813 W32A	APP CRS 321°	Rwy Ldg 6513 TDZE 712 Apt Elev 721
--	------------------------	---

RNAV (GPS) RWY 32

PELLSTON RGNL/EMMET COUNTY (PLN)

RNP APCH - GPS.

⚠ Circling Rwy 5, 14 NA at night. Baro-VNAV and VDP NA when using MGN altimeter setting.
⚠ For uncompensated Baro-VNAV systems, LNAV/VNAV NA below -20°C or above 54°C.
 For inop ALS, increase LNAV/VNAV all Cats and LNAV Cat C/D visibility to 1 SM. For inop ALS when using MGN altimeter setting; increase LNAV/VNAV all Cats visibility to 1 SM and LNAV Cat C/D visibility to 1 1/8 SM. When local altimeter setting not received, use MGN altimeter setting and increase LPV DA to 942 feet; increase LNAV/VNAV DA to 1086 feet; increase all MDAs 40 feet and LNAV visibility Cat C/D 1/8 SM.

MALSR

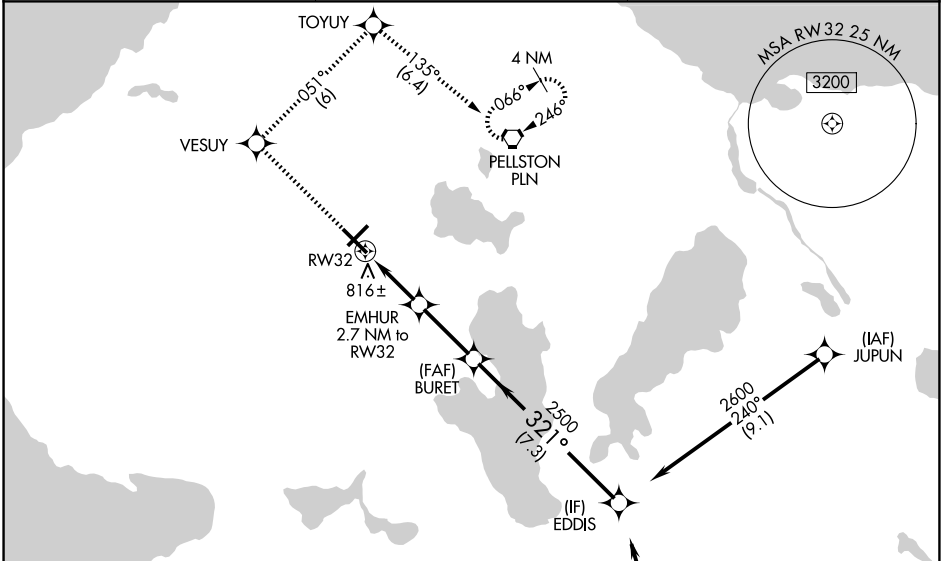


MISSED APPROACH:
 Climb to 2600 direct VESUY and on track 051° to TOYUY and on track 135° to PLN VORTAC and hold. (Do not exceed 200K until TOYUY).

ASOS
119.025

MINNEAPOLIS CENTER
134.6 354.05

UNICOM
123.0 (CTAF) 0

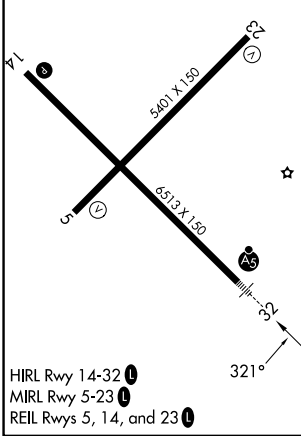


EC-1, 16 APR 2026 to 14 MAY 2026

EC-1, 16 APR 2026 to 14 MAY 2026

ELEV 721 **D** TDZE 712

Procedure NA for arrivals at RONDO on V609 southbound.



	2600	VESUY	TOYUY	PLN	BURET	EDDIS
↑	↑	✧ tr 051°	✧ tr 135°	⬠	✧	✧
				EMHUR 2.7 NM to RW32	2500	2600
				1 NM to RW32	1620	2500 GP 3.00° TCH 54
				1 NM 1.7 NM 2.8 NM 7.3 NM		
CATEGORY		A	B	C	D	
LPV DA			912-1/2	200 (200-1/2)		
LNAV/VNAV DA			1056-5/8	344 (400-5/8)		
LNAV MDA		1080-1/2	368 (400-1/2)	1080-5/8	368 (400-5/8)	
CIRCLING		1280-1 559 (600-1)	1320-1 599 (600-1)	1560-2 1/2 839 (900-2 1/2)	1660-3 939 (1000-3)	