

RNAV (GPS) RWY 5

PELLSTON RGNL/EMMET COUNTY (PLN)

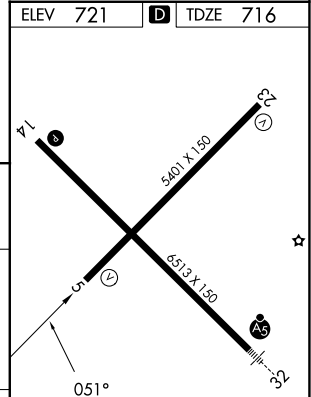
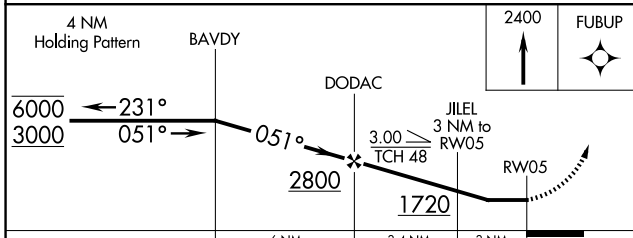
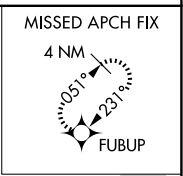
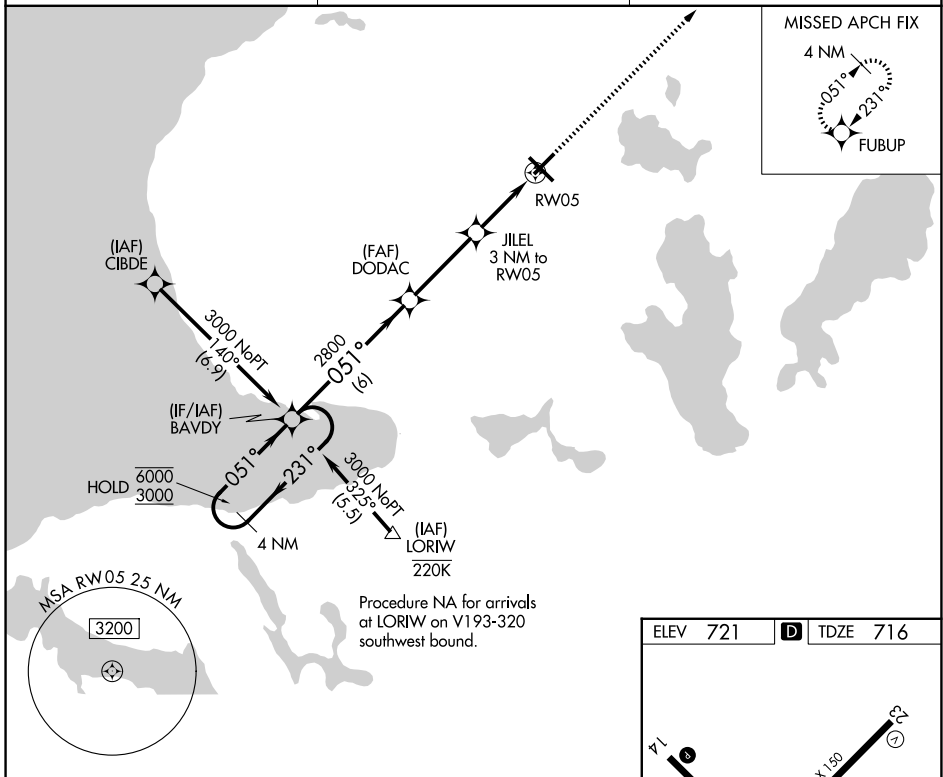
| | | |
|-------------|----------|-------------|
| APP CRS | Rwy Ldg | 5395 |
| 051° | TDZE | 716 |
| | Apt Elev | 721 |

RNP APCH - GPS.

▼ Rwy 5 helicopter visibility reduction below 1 SM NA.
▲ When local altimeter setting not received, use MGN altimeter setting and increase all MDAs 40 feet, and LNAV visibility Cat A ¼ SM. Straight-in Rwy 5 NA at night, Circling Rwy 5, 14 NA at night.

MISSED APPROACH: Climb to 2400 direct FUBUP and hold.

| | | |
|------------------------|---|---------------------------------|
| ASOS 119.025 | MINNEAPOLIS CENTER 134.6 354.05 | UNICOM 123.0 (CTAF) 0 |
|------------------------|---|---------------------------------|



| CATEGORY | A | B | C | D |
|----------|-----------------------|-------------------------|-------------------------|------------------------|
| LNAV MDA | 1560-1 844 (900-1) | 1560-1¼ 844 (900-1¼) | 1560-2½ 844 (900-2½) | 844 (900-2½) |
| CIRCLING | 1560-1¼ | 839 (900-1¼) | 1560-2½ 839 (900-2½) | 1660-3 939 (1000-3) |

HIRL Rwy 14-32 0
 MRL Rwy 5-23 0
 REIL Rws 5, 14, and 23 0

EC-1, 16 APR 2026 to 14 MAY 2026

EC-1, 16 APR 2026 to 14 MAY 2026