

VORTAC PLN <b>111.8</b> Chan <b>55</b>	APP CRS <b>245°</b>	Rwy Ldg TDZE <b>721</b> Apt Elev <b>721</b>
--	------------------------	---

# VOR RWY 23

PELLSTON RGNL/EMMET COUNTY (PLN)

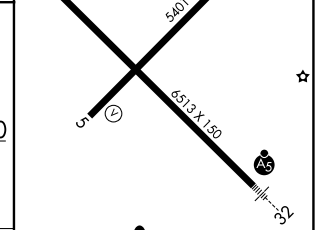
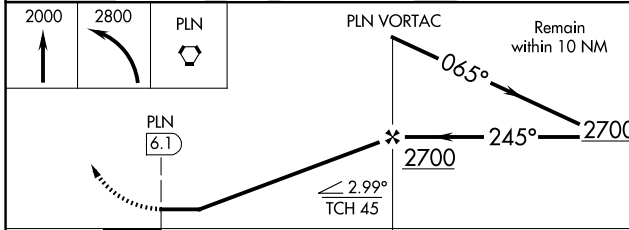
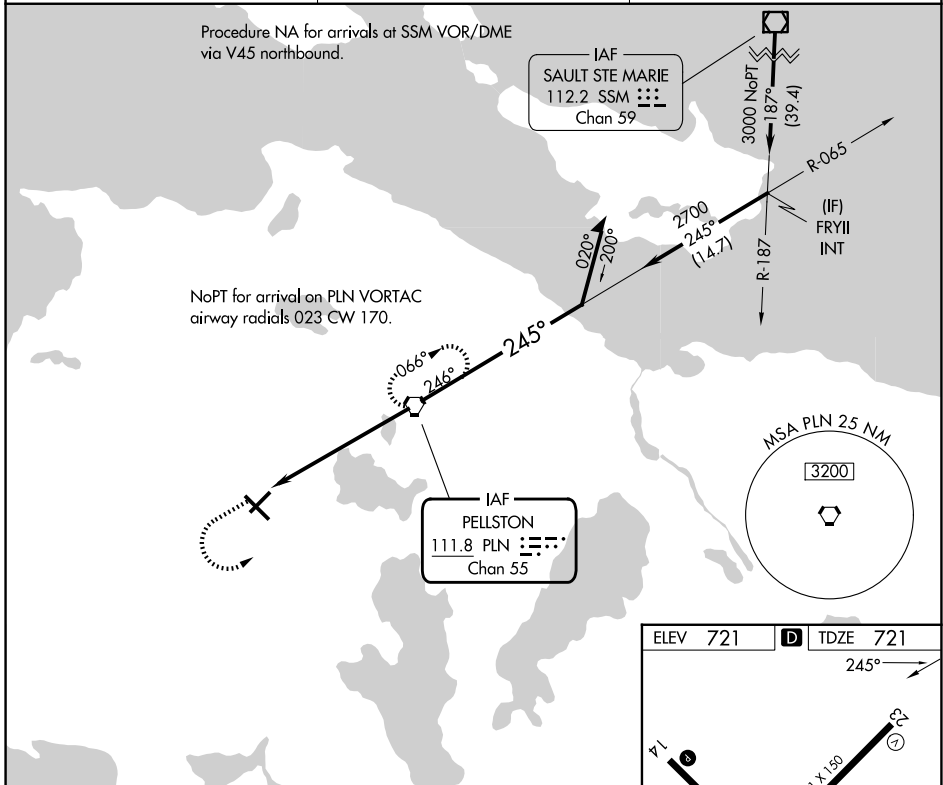
**⚠** When local altimeter setting not received, use Harbor Springs altimeter setting: increase all MDA 40 feet and visibility S-23 Cat C and D ¼ SM.  
**⚠** Rwy 23 helicopter visibility reduction below 1 SM NA.  
 Straight-in Rwy 23 NA at night, Circling Rwy 5, 14, 23 NA at night.

**MISSED APPROACH:** Climb to 2000 then climbing left turn to 2800 direct PLN VORTAC and hold.

ASOS  
**119.025**

MINNEAPOLIS CENTER  
**134.6 354.05**

UNICOM  
**123.0 (CTAF) 0**



CATEGORY	A	B	C	D
S-23	1300-1	579 (600-1)	1300-1½ 579 (600-1½)	1300-1¾ 579 (600-1¾)
CIRCLING	1300-1 579 (600-1)	1320-1 599 (600-1)	1560-2½ 839 (900-2½)	1660-3 939 (1000-3)

HIRL Rwy 14-32 0

MIRL Rwy 5-23 0

REIL Rwys 5, 14, and 23 0

FAF to MAP 6.1 NM

Knots	60	90	120	150	180
Min:Sec	6:06	4:04	3:03	2:26	2:02

EC-1, 16 APR 2026 to 14 MAY 2026

EC-1, 16 APR 2026 to 14 MAY 2026