

WAAS CH 58240 W21A	APP CRS 213°	Rwy Idg TDZE 1194 Apt Elev 1194	5002 1194 1194
----------------------------------------	------------------------	-----------------------------------------------------	-------------------------------------------

RNAV (GPS) RWY 21

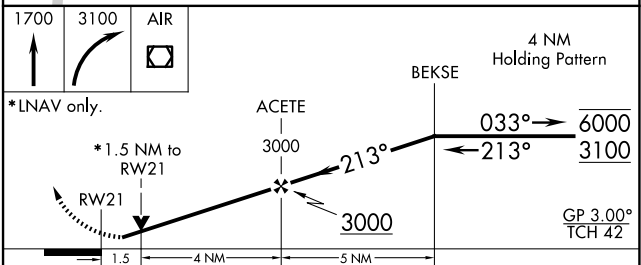
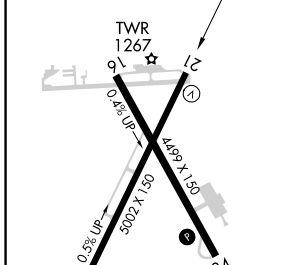
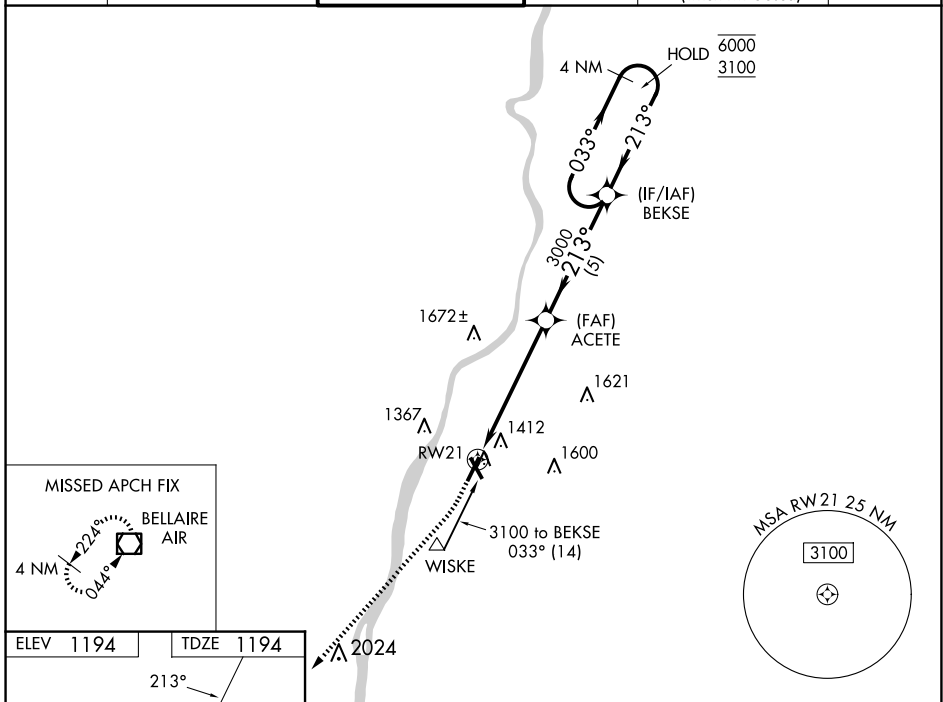
WHEELING OHIO COUNTY (HLG)

RNP APCH.

▼ Rwy 21 helicopter visibility reduction below 3/4 SM NA. For uncompensated Baro-VNAV systems, procedure NA below -17°C or above 54°C.
▲

MISSED APPROACH: Climb to 1700 then climbing right turn to 3100 direct AIR VOR/DME and hold.

ASOS 127.375	PITTSBURGH APP CON 125.275 285.575	WHEELING TOWER * 118.1 (CTAF) 0257.8	GND CON 121.75	CLNC DEL 125.275 (when twr closed)	UNICOM 122.95
------------------------	----------------------------------------------	------------------------------------------------	--------------------------	-------------------------------------------------	-------------------------



ELEV 1194	TDZE 1194																													
		<table border="1"> <tr> <td>1700</td> <td>3100</td> <td>AIR</td> <td colspan="2">4 NM Holding Pattern</td> </tr> <tr> <td colspan="2">* LNAV only.</td> <td>ACETE</td> <td colspan="2">BEKSE</td> </tr> <tr> <td colspan="2">* 1.5 NM to RWY 21</td> <td>3000</td> <td colspan="2">033° → 6000 ← 213° 3100</td> </tr> <tr> <td colspan="2">RWY 21</td> <td>3000</td> <td colspan="2">GP 3.00° TCH 42'</td> </tr> <tr> <td colspan="2">1.5</td> <td>4 NM</td> <td colspan="2">5 NM</td> </tr> </table>				1700	3100	AIR	4 NM Holding Pattern		* LNAV only.		ACETE	BEKSE		* 1.5 NM to RWY 21		3000	033° → 6000 ← 213° 3100		RWY 21		3000	GP 3.00° TCH 42'		1.5		4 NM	5 NM	
1700	3100	AIR	4 NM Holding Pattern																											
* LNAV only.		ACETE	BEKSE																											
* 1.5 NM to RWY 21		3000	033° → 6000 ← 213° 3100																											
RWY 21		3000	GP 3.00° TCH 42'																											
1.5		4 NM	5 NM																											
CATEGORY	A	B	C	D																										
LPV DA		1444/50	250 (300-1)																											
LNAV/VNAV DA		1653-1 3/8	459 (500-1 3/8)																											
LNAV MDA	1700/55	506 (600-1)	1700-1 3/8	506 (600-1 3/8)																										
C CIRCLING	1720-1 526 (600-1)	1740-1 546 (600-1)	1920-2 726 (800-2)	1920-2 1/4 726 (800-2 1/4)																										

NE-4, 16 APR 2026 to 14 MAY 2026

NE-4, 16 APR 2026 to 14 MAY 2026