

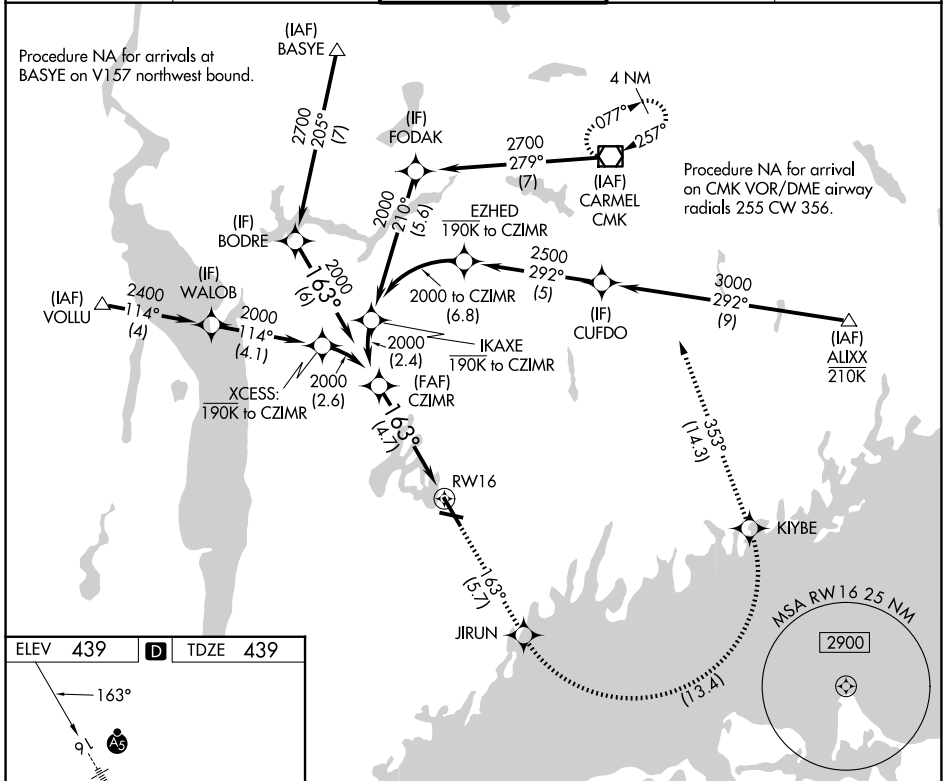
APP CRS	Rwy Ldg	6549
163°	TDZE	439
	Apt Elev	439

RNAV (RNP) Z RWY 16

WESTCHESTER COUNTY (HPN)

RNP AR APCH - GPS.	MALSR	MISSED APPROACH: Climb to 3000 on track 163° to JIRUN, left turn to KIYBE, then track 353° to CMK VOR/DME and hold.
▼ For uncompensated Baro-VNAV systems, procedure NA below -14°C or above 54°C.		

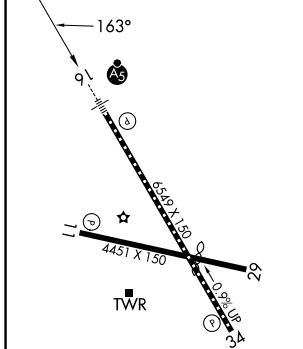
D-ATIS 133.8	NEW YORK APP CON 120.8 126.4 257.65	WESTCHESTER TOWER ★ 118.575 (CTAF) 0 284.65	GND CON 121.825	UNICOM 122.95
------------------------	-----------------------------------------------	-------------------------------------------------------	---------------------------	-------------------------



NE-2, 16 APR 2026 to 14 MAY 2026

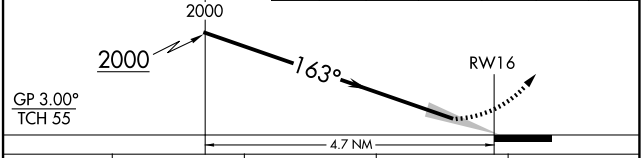
NE-2, 16 APR 2026 to 14 MAY 2026

ELEV 439	D	TDZE 439
----------	----------	----------



REIL Rwy 11 and 34	
HIRL Rwy 16-34	
MIRL Rwy 11-29	
TDZ/CL Rwy 16	

See planview for multiple IF locations.	3000	JIRUN	KIYBE	CMK
	↑ tr 163°			



CATEGORY	A	B	C	D
RNP 0.15 DA		826/35	387 (400-5/8)	
RNP 0.30 DA		950/55	511 (600-1)	

AUTHORIZATION REQUIRED