

APP CRS <b>343°</b>	Rwy Ldg <b>6549</b>
	TDZE <b>401</b>
	Apt Elev <b>439</b>

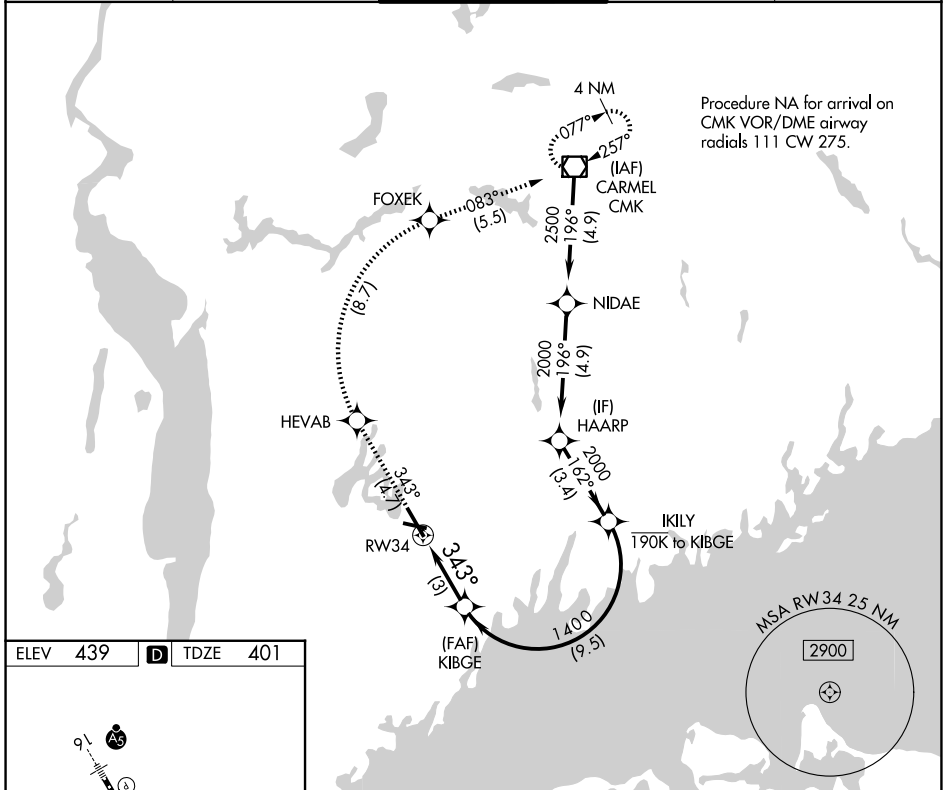
# RNAV (RNP) Z RWY 34

WESTCHESTER COUNTY (HPN)

▼ For uncompensated Baro-VNAV systems, procedure NA below -14°C (7°F) or above 54°C (130°F). RF required. GPS required.

MISSED APPROACH: Climb to 3000 on track 343° to HEVAB, right turn to FOXEK, then on track 083° to CMK VOR/DME and hold.

D-ATIS <b>133.8</b>	NEW YORK APP CON <b>120.8 126.4 257.65</b>	WESTCHESTER TOWER ★ <b>118.575 (CTAF) 0 284.65</b>	GND CON <b>121.825</b>	UNICOM <b>122.95</b>
------------------------	---	---	---------------------------	-------------------------

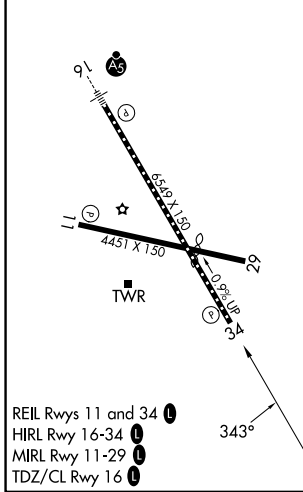


Procedure NA for arrival on CMK VOR/DME airway radials 111 CW 275.

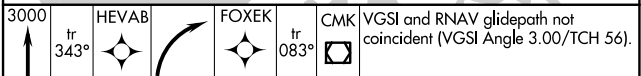
NE-2, 16 APR 2026 to 14 MAY 2026

NE-2, 16 APR 2026 to 14 MAY 2026

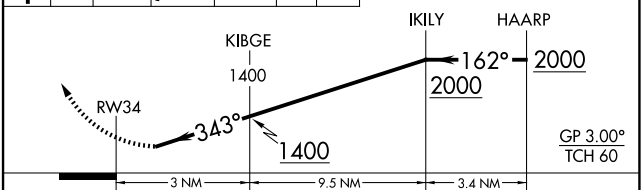
ELEV 439	<b>D</b>	TDZE 401
----------	----------	----------



- REIL Rwys 11 and 34
- HIRL Rwy 16-34
- MIRL Rwy 11-29
- TDZ/CL Rwy 16



VGSI and RNAV glidepath not coincident (VGSI Angle 3.00/TCH 56).



CATEGORY	A	B	C	D
RNP 0.30 DA	788-1 $\frac{3}{8}$		387 (400-1 $\frac{3}{8}$ )	

**AUTHORIZATION REQUIRED**