

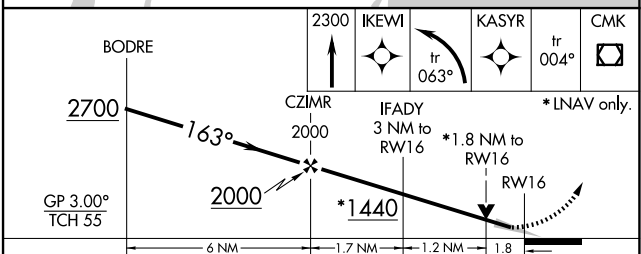
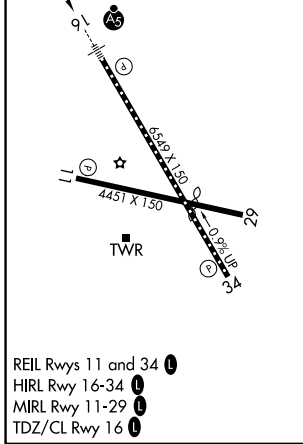
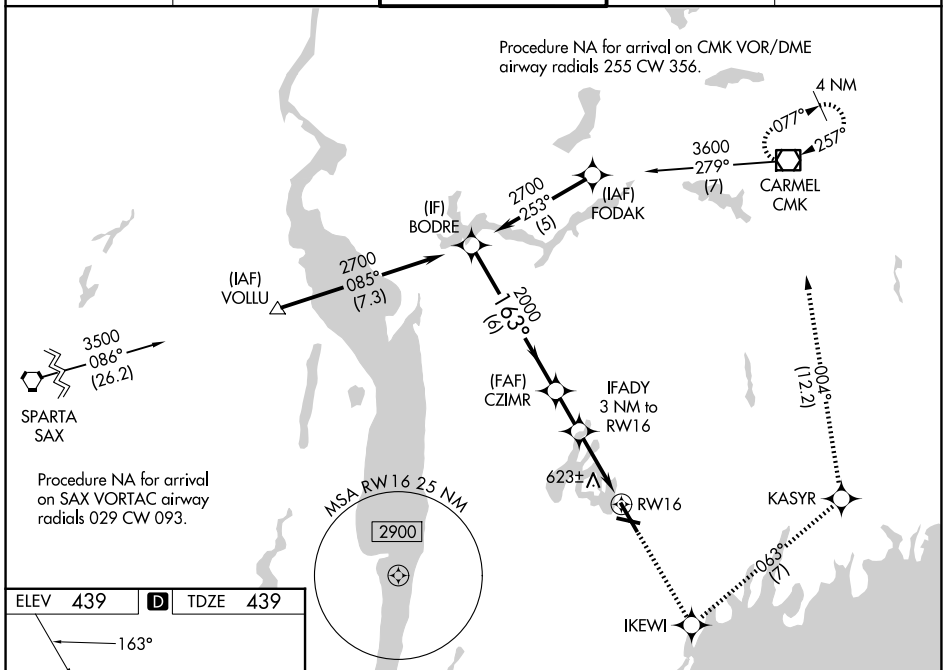
WAAS CH 69519 W16A	APP CRS 163°	Rwy Ldg 6549 TDZE 439 Apt Elev 439
--	------------------------	---

RNAV (GPS) Y RWY 16

WESTCHESTER COUNTY (HPN)

<p>⚠ For uncompensated Baro-VNAV systems, LNAV/VNAV NA below -1.5°C (5°F) or above 54°C (130°F). Circling Rwy 11, 29 NA at night. DME/DME RNP-0.3 NA.</p>	<p>MALSR</p>	<p>MISSED APPROACH: Climb to 2300 direct IKEWI and left turn on track 063° to KASYR and on track 004° to CMK VOR/DME and hold.</p>

D-ATIS 133.8	NEW YORK APP CON 120.8 126.4 257.65	WESTCHESTER TOWER ★ 118.575 (CTAF) 0 284.65	GND CON 121.825	UNICOM 122.95
------------------------	---	---	---------------------------	-------------------------



GP 3.00° TCH 55	6 NM	1.7 NM	1.2 NM	1.8
CATEGORY	A	B	C	D
LPV DA		689/24	250 (300-½)	
LNAV/VNAV DA		978-1½	539 (600-1½)	
LNAV MDA	1060/24	621 (700-½)	1060/60 621 (700-1¼)	1060-1½ 621 (700-1½)
CIRCLING	1060-1	621 (700-1)	1080-1¾ 641 (700-1¾)	1200-2 ½ 761 (800-2½)

NE-2, 16 APR 2026 to 14 MAY 2026

NE-2, 16 APR 2026 to 14 MAY 2026