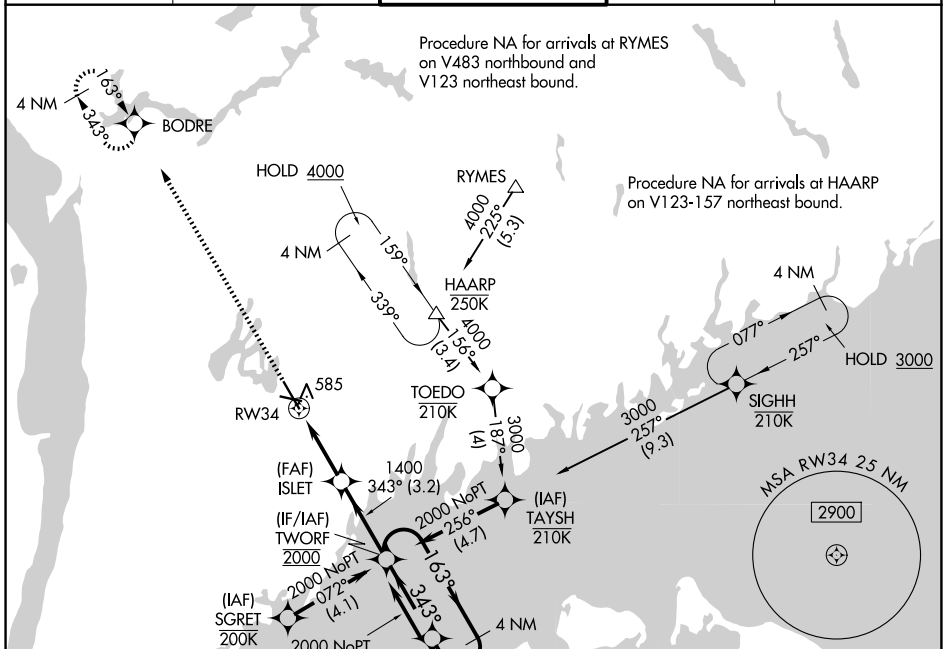


WAAS CH <b>99410</b> <b>W34A</b>	APP CRS <b>343°</b>	Rwy Ldg TDZE Apt Elev	<b>6549</b> <b>401</b> <b>439</b>
--	------------------------	-----------------------------	---

# RNAV (GPS) Y RWY 34

WESTCHESTER COUNTY (HPN)

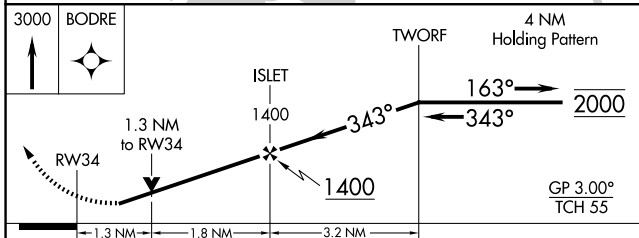
RNP APCH - GPS		MISSED APPROACH: Climb to 3000 direct BODRE and hold.	
<p>▼ Rwy 34 helicopter visibility reduction below 3/4 SM NA. Circling Rwy 11, 29 NA at night. ▲ For uncompensated Baro-VNAV systems, LNAV/VNAV NA below -12°C or above 54°C.</p>			
D-ATIS <b>133.8</b>	NEW YORK APP CON <b>120.8 126.4 257.65</b>	WESTCHESTER TOWER ★ <b>118.575 (CTAF) 0 284.65</b>	GND CON <b>121.825</b>
		UNICOM <b>122.95</b>	



NE-2, 16 APR 2026 to 14 MAY 2026

NE-2, 16 APR 2026 to 14 MAY 2026

ELEV 439	D	TDZE 401
----------	---	----------



CATEGORY	A	B	C	D
LPV DA		651-3/4	250 (300-3/4)	
LNAV/VNAV DA		780-1	379 (400-1)	
LNAV MDA	840-1	439 (500-1)	840-1 1/4	439 (500-1 1/4)
CIRCLING	980-1	541 (600-1)	1080-1 3/4	1200-2 1/2
			641 (700-1 3/4)	761 (800-2 1/2)

