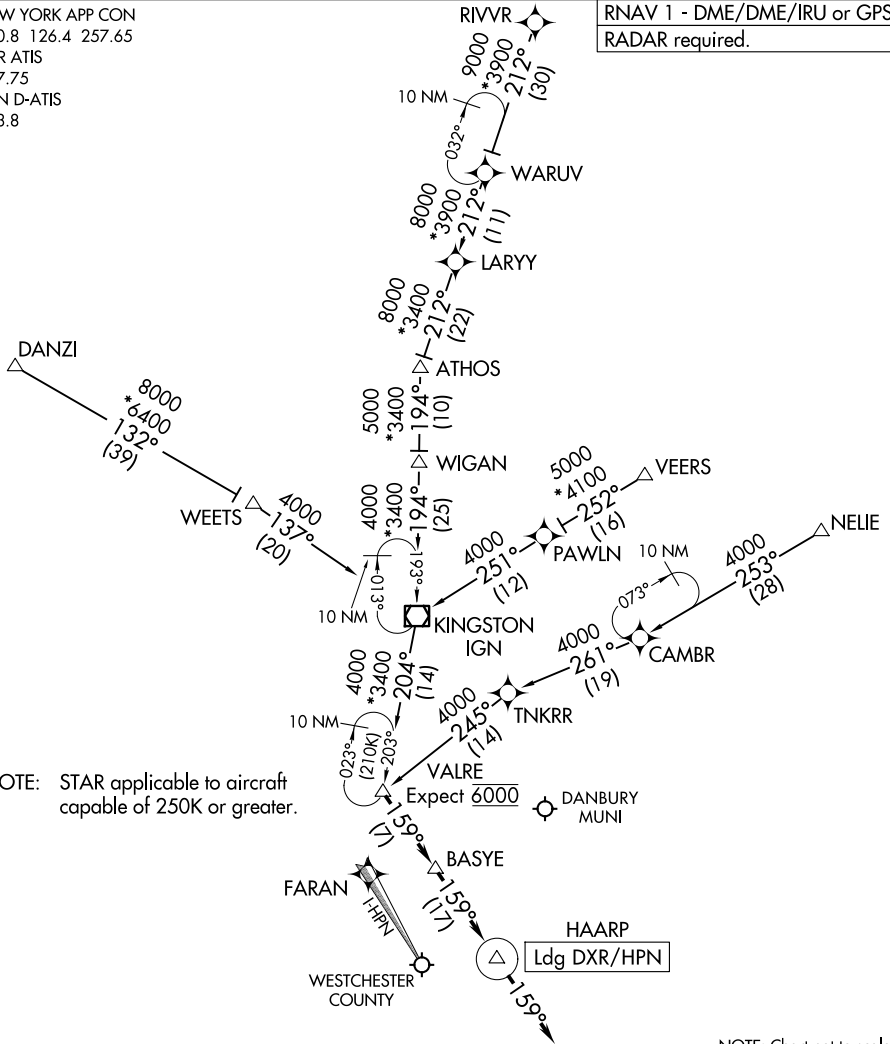


VALRE ONE ARRIVAL (RNAV)

WHITE PLAINS, NEW YORK

NEW YORK APP CON
 120.8 126.4 257.65
 DXR ATIS
 127.75
 HPN D-ATIS
 133.8

RNAV 1 - DME/DME/IRU or GPS.
 RADAR required.



NOTE: STAR applicable to aircraft capable of 250K or greater.

NOTE: Chart not to scale.

ARRIVAL ROUTE DESCRIPTION

- DANZI TRANSITION (DANZI.VALRE1)
- NELIE TRANSITION (NELIE.VALRE1)
- RIVVR TRANSITION (RIVVR.VALRE1)
- VEERS TRANSITION (VEERS.VALRE1)
- WIGAN TRANSITION (WIGAN.VALRE1)

LANDING ALL AIRPORTS: From VALRE on track 159° to BASYE, then on track 159° to HAARP, then on track 159°. Expect RADAR vectors to final approach course.

NE-2, 16 APR 2026 to 14 MAY 2026

NE-2, 16 APR 2026 to 14 MAY 2026