

LOC/DME I-RSR 110.9 Chan 46	APP CRS 109°	Rwy Ldg TDZE 7001 980	Apt Elev 1009
---	------------------------	---	-------------------------

ILS RWY 11 (CAT II & III)

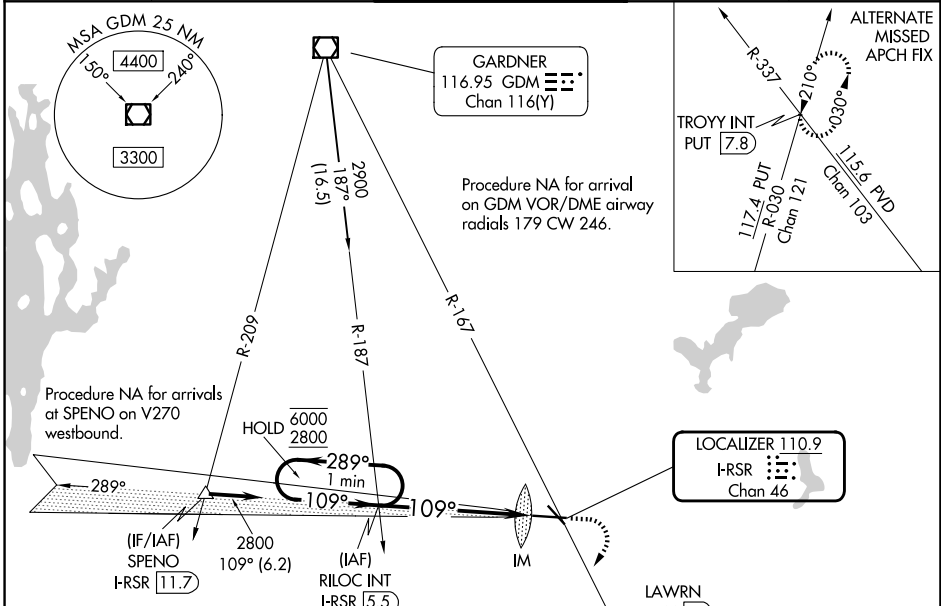
WORCESTER RGNL (ORH)

▼ CAT II: RVR 1000 authorized with specific OPSPEC, MSPEC, or LOA approval and use of autofeol and HUD to touchdown. Procedure NA when tower closed.

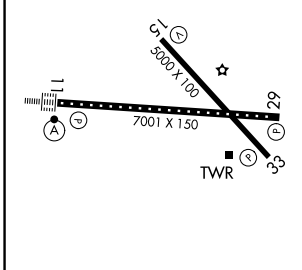
▲ MISSED APPROACH: Climb to 1800 then climbing right turn to 3100 on heading 230° and on GDM VOR/DME R-167 to LAWNRN/GDM 23 DME and hold, continue climb-in-hold to 3100.

ALSF-2

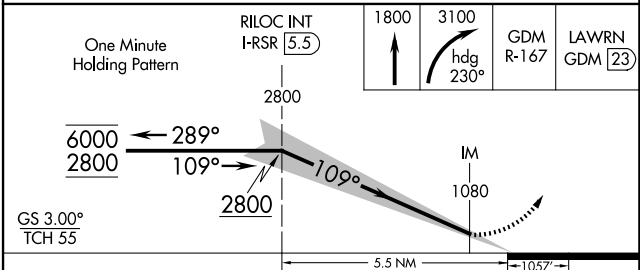
ATIS 126.55	BRADLEY APP CON 119.0 327.1	WORCESTER TOWER ★ 120.5 (CTAF) 263.0	GND CON 123.85	UNICOM 122.95
-----------------------	---------------------------------------	--	--------------------------	-------------------------



ELEV 1009	D	TDZE 980
-----------	----------	----------



TDZ/CL Rwy 11
REIL Rwy 15, 29 and 33
HIRL Rwy 11-29
MIRL Rwy 15-33



CATEGORY	A	B	C	D
S-ILS 11	CAT II RA 119/12 100 DA 1080			
S-ILS 11	CAT III RVR 06			

CATEGORY II & III ILS - SPECIAL AIRCREW & AIRCRAFT CERTIFICATION REQUIRED

NE-1, 16 APR 2026 to 14 MAY 2026

NE-1, 16 APR 2026 to 14 MAY 2026