

LOC/DME I-RSR 110.9 Chan 46	APP CRS 109°	Rwy Ldg TDZE Apt Elev	7001 980 1009
---	------------------------	-----------------------------	--

ILS or LOC RWY 11

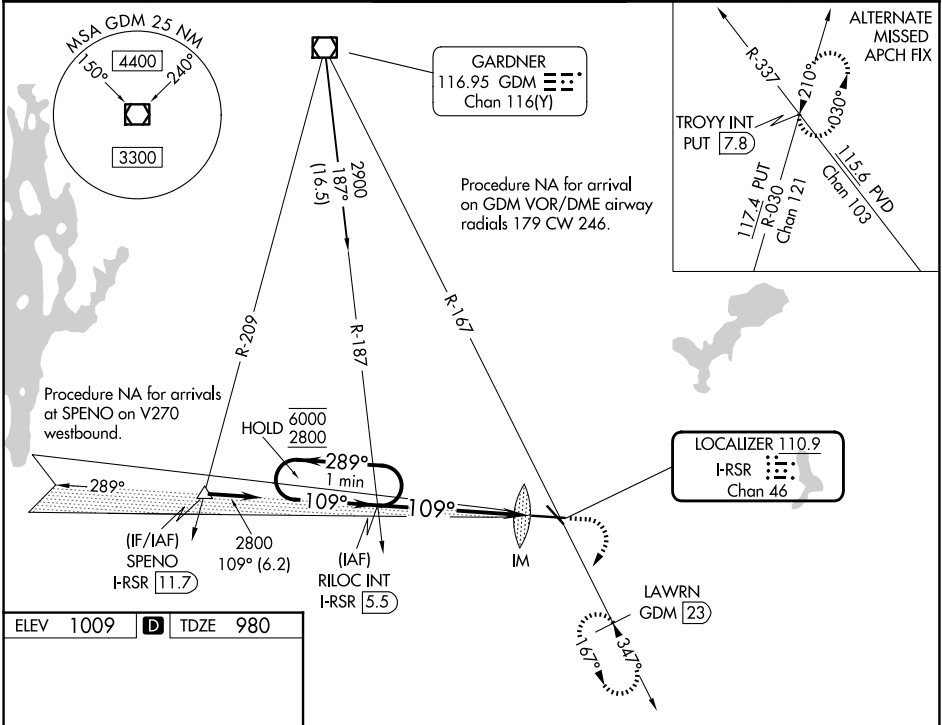
WORCESTER RGNL (ORH)

⚠ For inop ALS, increase S-LOC 11 Cats C and D visibility to 1 1/2 SM. When control tower closed: inop table does not apply to S-ILS 11 all Cats. When control tower closed: for inop ALS, increase S-LOC 11 Cat C and D visibility to 1 1/2 SM.

ALS F-2

MISSED APPROACH: Climb to 1800 then climbing right turn to 3100 on heading 230° and on GDM VOR/DME R-167 to LAWNRN/GDM 23 DME and hold, continue climb-in-hold to 3100.

ATIS 126.55	BRADLEY APP CON 119.0 327.1	WORCESTER TOWER ★ 120.5 (CTAF) 263.0	GND CON 123.85	UNICOM 122.95
-----------------------	---------------------------------------	--	--------------------------	-------------------------



ELEV 1009	D	TDZE 980
-----------	----------	----------

TDZ/CL Rwy 11
REIL Rws 15, 29 and 33
HIRL Rwy 11-29
MIRL Rwy 15-33

FAF to MAP 5.5 NM

Knots	60	90	120	150	180
Min:Sec	5:30	3:40	2:45	2:12	1:50

One Minute Holding Pattern

RILOC INT I-RSR 5.5

1800

3100

GDM R-167

LAWNRN GDM 23

2800

6000

2800

2800

2800

109°

109°

109°

IM

I-RSR 1.4

GS 3.00° TCH 55

4.1 NM

1.4 NM

0.1

CATEGORY	A	B	C	D
S-ILS 11	1180/18 200 (200-1/2)			
S-LOC 11	1500/24	520 (500-1/2)	1500/55	520 (500-1)
CIRCLING	1560-1 551 (600-1)	1740-1 731 (800-1)	2000-3	991 (1000-3)

NE-1, 16 APR 2026 to 14 MAY 2026

NE-1, 16 APR 2026 to 14 MAY 2026