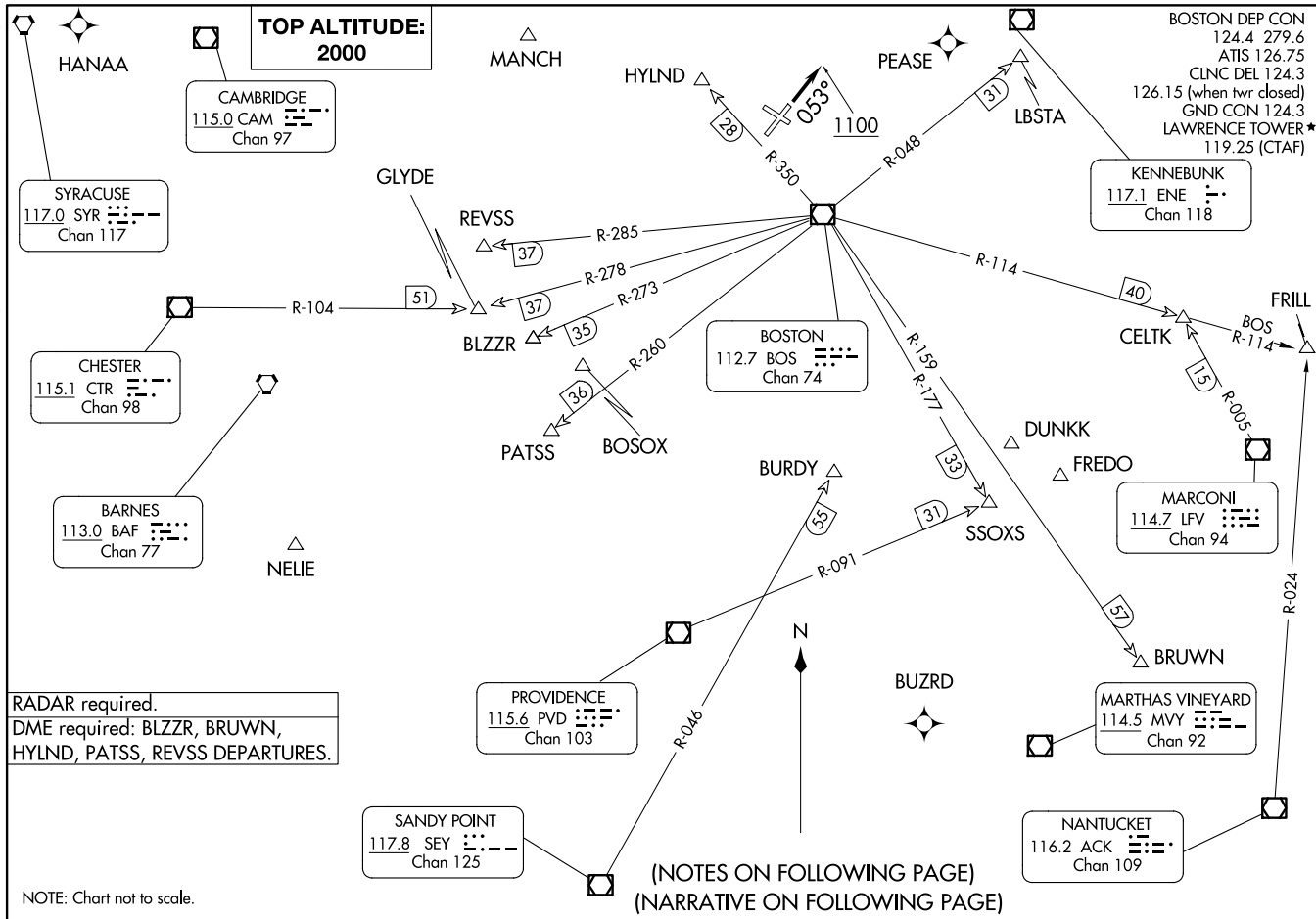


LAWRENCE TWO DEPARTURE  
(LWM2.LWM) 29DEC22

(LWM2.LWM) 24193  
LAWRENCE TWO DEPARTURE

AL-654 (FAA)

LAWRENCE MUNI (LWM)  
LAWRENCE, MASSACHUSETTS



**TOP ALTITUDE:  
2000**

SYRACUSE  
117.0 SYR  
Chan 117

CAMBRIDGE  
115.0 CAM  
Chan 97

CHESTER  
115.1 CTR  
Chan 98

BARNES  
113.0 BAF  
Chan 77

PROVIDENCE  
115.6 PVD  
Chan 103

SANDY POINT  
117.8 SEY  
Chan 125

BOSTON  
112.7 BOS  
Chan 74

KENNEBUNK  
117.1 ENE  
Chan 118

MARCONI  
114.7 LFV  
Chan 94

MARTHAS VINEYARD  
114.5 MVY  
Chan 92

NANTUCKET  
116.2 ACK  
Chan 109

BOSTON DEP CON  
124.4 279.6  
ATIS 126.75  
CLNC DEL 124.3  
126.15 (when twr closed)  
GND CON 124.3  
LAWRENCE TOWER\*  
119.25 (CTAF)

**RADAR required.**  
DME required: BLZZR, BRUWN,  
HYLND, PATSS, REVSS DEPARTURES.

NOTE: Chart not to scale.

(NOTES ON FOLLOWING PAGE)  
(NARRATIVE ON FOLLOWING PAGE)

LAWRENCE, MASSACHUSETTS  
LAWRENCE MUNI (LWM)

# LAWRENCE TWO DEPARTURE



## DEPARTURE ROUTE DESCRIPTION

TAKEOFF RUNWAY 5: Climb on heading 053° to 1100, then as assigned by ATC, thence....

TAKEOFF RUNWAYS 14, 23, 32: Climb on heading as assigned by ATC, thence....

....expect RADAR vectors to assigned route/navaid/fix. Maintain 2000.  
Expect filed altitude/flight level 10 minutes after departure.

### TAKEOFF MINIMUMS:

Rwy 5: 300-1½ or standard with minimum climb of 435' per NM to 500.

Rwy 14: 300-1 or standard with minimum climb of 625' per NM to 600.

Rwy 23: 300-1 or standard with minimum climb of 350' per NM to 400.

Rwy 32: Standard.

NOTE: Non RNAV equipped aircraft can expect vectors on assigned route.

NOTE: BLZZR DEPARTURES expect vectors on BOS R-273.

NOTE: BRUWN DEPARTURES expect vectors on BOS R-159.

NOTE: CELTK DEPARTURES expect vectors on BOS R-114.

NOTE: HYLND DEPARTURES expect vectors on BOS R-350.

NOTE: PATSS DEPARTURES expect vectors on BOS R-260.

NOTE: REVSS DEPARTURES expect vectors on BOS R-285.

NOTE: SSOXS DEPARTURES expect vectors on BOS R-177.

NE-1, 16 APR 2026 to 14 MAY 2026

NE-1, 16 APR 2026 to 14 MAY 2026