

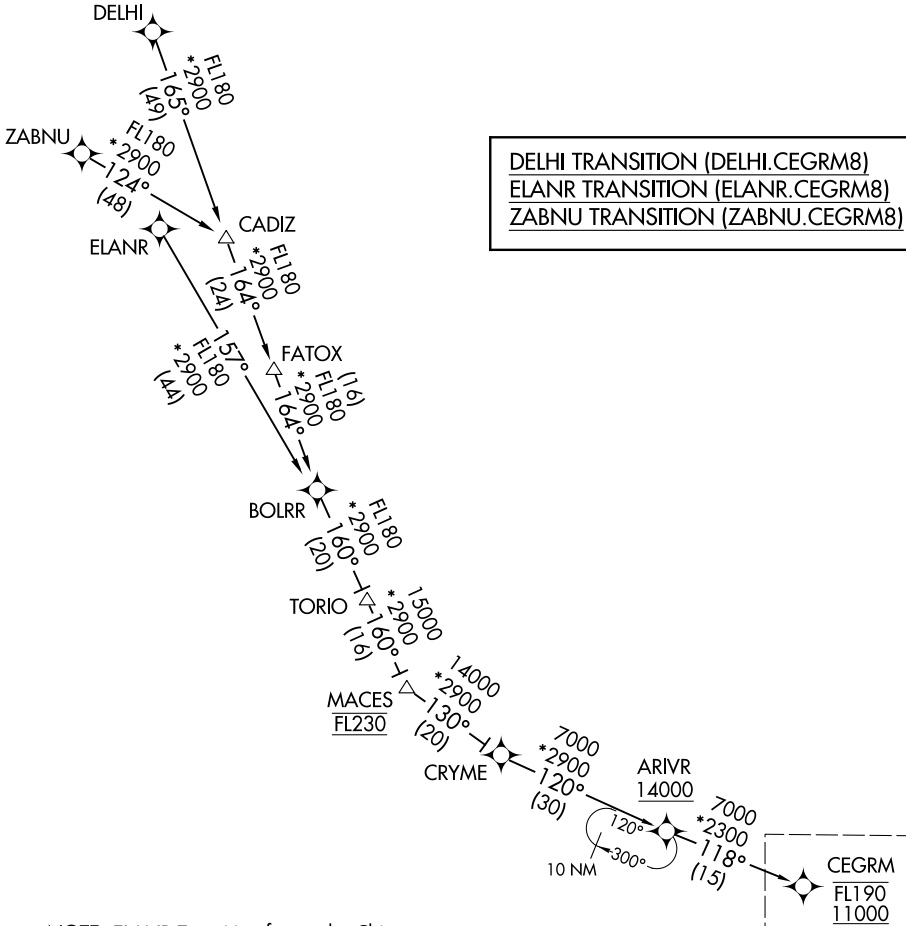
# CEGRM EIGHT ARRIVAL (RNAV) Transition Routes

COVINGTON, KENTUCKY

CINCINNATI APP CON  
 119.7 363.15 (090°-269°)  
 123.875 363.15 (270°-089°)  
 CVG D-ATIS  
 134.375  
 LUK ATIS  
 123.6

RNAV 1 - DME/DME/IRU or GPS.

RADAR required.



**DELHI TRANSITION (DELHI.CEGRM8)**  
**ELANR TRANSITION (ELANR.CEGRM8)**  
**ZABNU TRANSITION (ZABNU.CEGRM8)**

NOTE: ELANR Transition for use by Chicago area departures only or as assigned by ATC.

See following page for arrival route.

SE-1, 16 APR 2026 to 14 MAY 2026

SE-1, 16 APR 2026 to 14 MAY 2026

NOTE: Chart not to scale.

(CONTINUED ON FOLLOWING PAGE)

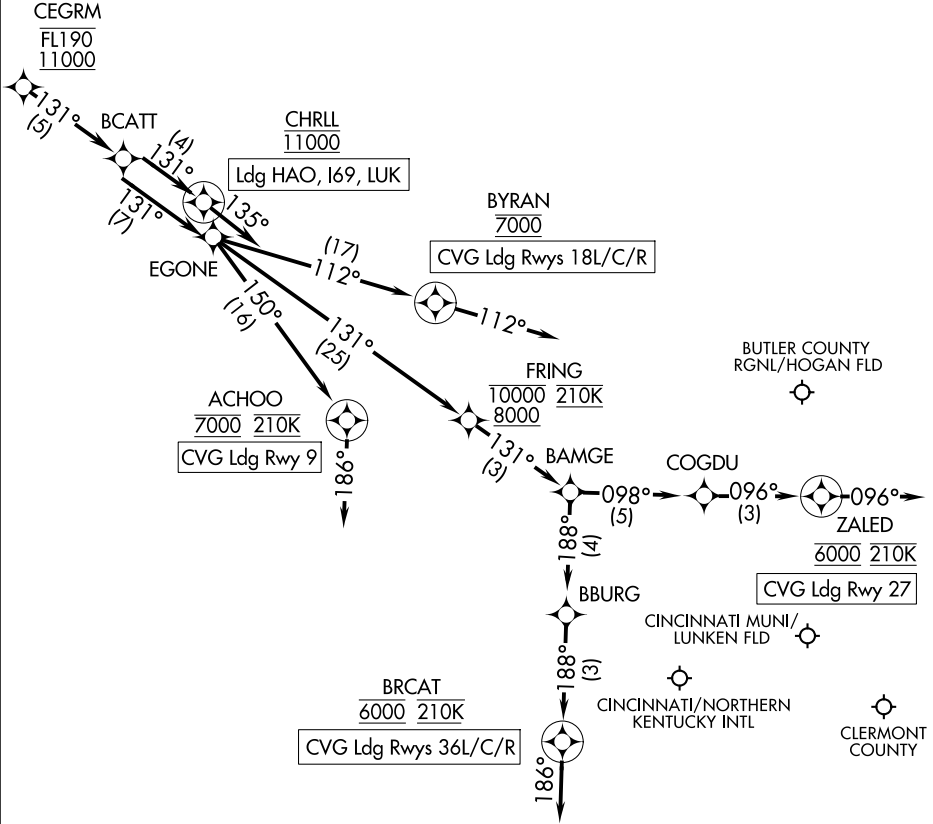
# CEGRM EIGHT ARRIVAL (RNAV) Arrival Routes

COVINGTON, KENTUCKY

CINCINNATI APP CON  
 119.7 363.15 (090°-269°)  
 123.875 363.15 (270°-089°)  
 CVG D-ATIS  
 134.375  
 LUK ATIS  
 123.6

RNAV 1 - DME/DME/IRU or GPS.

RADAR required.



SE-1, 16 APR 2026 to 14 MAY 2026

SE-1, 16 APR 2026 to 14 MAY 2026

NOTE: ELANR TRANSITION for use by Chicago area departures only or as assigned by ATC.

(CONTINUED ON FOLLOWING PAGE)

NOTE: Chart not to scale.

# CEGRM EIGHT ARRIVAL (RNAV) Arrival Routes

COVINGTON, KENTUCKY

# CEGRM EIGHT ARRIVAL (RNAV)

## ARRIVAL ROUTE DESCRIPTION

CVG: From CEGRM on track 131° to BCATT, then on track 131° to EGONE.

LANDING CVG RUNWAY 9: From EGONE on track 150° to cross ACHOO at 7000 and at 210K, then on heading 186°. Expect RADAR vectors to final approach course for ILS, GPS, or RNP Rwy 9 approach.

LANDING CVG RUNWAY 18L/C/R: From EGONE on track 112° to cross BYRAN at 7000, then on track 112°. Expect RADAR vectors to final approach course for ILS, GPS, or RNP Rwy 18L/C/R approach.

LANDING CVG RUNWAY 27: From EGONE on track 131° to cross FRING between 8000 and 10000 and at 210K, then on track 131° to BAMGE, then on track 098° to COGDU, then on track 096° to cross ZALD at 6000 and at 210K, then on track 096°. Expect RADAR vectors to final approach course for ILS, GPS, or RNP Rwy 27 approach.

LANDING CVG RUNWAY 36L/C/R: From EGONE on track 131° to cross FRING between 8000 and 10000 and at 210K, then on track 131° to BAMGE, then on track 188° to BBURG, then on track 188° to cross BRCAT at 6000 and at 210K, then on track 186°. Expect RADAR vectors to final approach course for ILS, GPS, or RNP Rwy 36L/C/R approach.

LANDING I69/LUK/HAO: From CEGRM on track 131° to BCATT, then on track 131° to cross CHRLL at 11000, then on track 135°. Expect RADAR vectors to final approach course.

SE-1, 16 APR 2026 to 14 MAY 2026

SE-1, 16 APR 2026 to 14 MAY 2026