

(HAGOL5.HAGOL) 24081

CINCINNATI/NORTHERN KENTUCKY INTL (CVG)

# HAGOL FIVE DEPARTURE (RNAV)

AL-655 (FAA)

COVINGTON, KENTUCKY

CINCINNATI DEP CON  
 126.65 254.25 (001°-180°)  
 128.7 254.25 (181°-360°)  
 D-ATIS DEP 135.3  
 CLNC DEL 127.175  
 CPDLC  
 GND CON 121.7  
 CINCINNATI TOWER  
 118.3 (RWYS 18C/36C, 9/27)  
 118.975 360.85 (RWY 18L/36R)  
 133.325 (RWY 18R/36L)

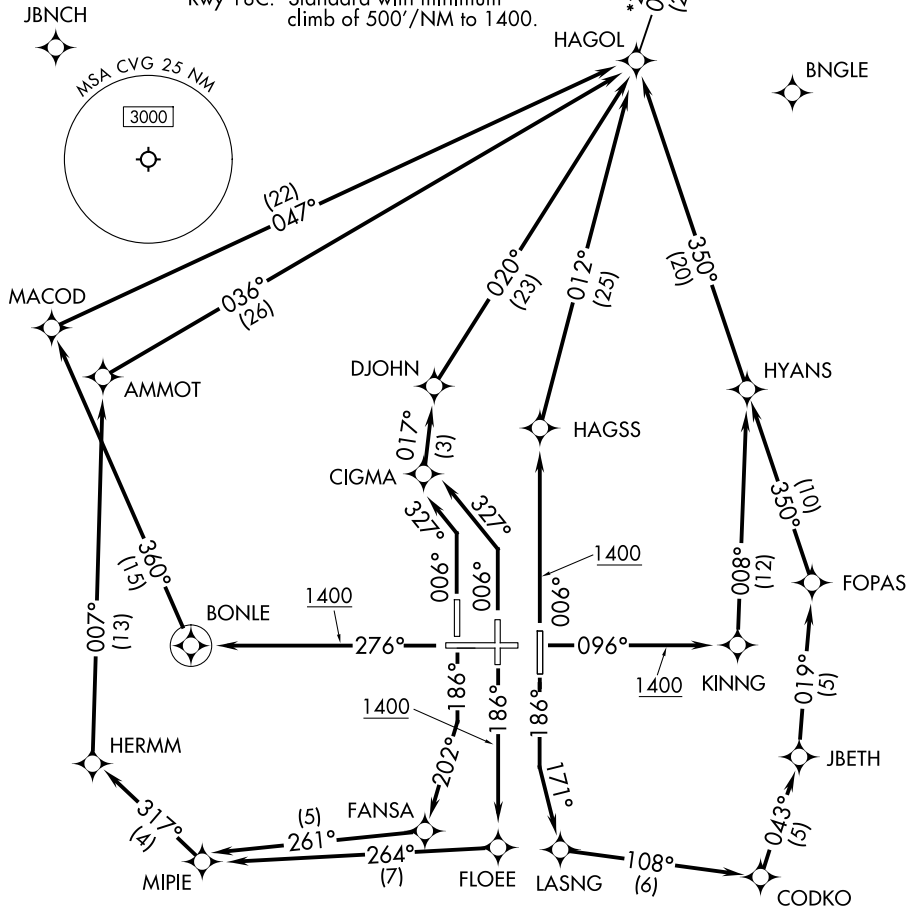
RNAV 1 - DME/DME/IRU or GPS.  
 RADAR required for non-GPS equipped aircraft.

**TOP ALTITUDE:**  
 (JETS/PROPS)  
 5000 4000

- NOTE: If unable to accept climb rates, advise ATC on initial contact.
- NOTE: Transponder code will be issued via PDC or Cincinnati CLNC DEL.
- NOTE: Increase speed to 250K until reaching/leaving 10000'. If unable, advise ATC.

### TAKEOFF MINIMUMS:

Rwys 9, 18L/R, 27, 36L/C/R: Standard.  
 Rwy 18C: Standard with minimum climb of 500'/NM to 1400.



NOTE: Chart not to scale.

(CONTINUED ON FOLLOWING PAGE)

## HAGOL FIVE DEPARTURE (RNAV)

COVINGTON, KENTUCKY

(HAGOL5.HAGOL) 21MAR24

CINCINNATI/NORTHERN KENTUCKY INTL (CVG)

SE-1, 16 APR 2026 to 14 MAY 2026

SE-1, 16 APR 2026 to 14 MAY 2026



DEPARTURE ROUTE DESCRIPTION

TAKEOFF RUNWAY 9: Climb on heading 096° to 1400, then direct KINNG, then on track 008° to HYANS, then on track 350° to HAGOL, thence. . . .

TAKEOFF RUNWAY 18L: Climb on heading 186° to intercept course 171° to LASNG, then on track 108° to CODKO, then on track 043° to JBETH, then on track 019° to FOPAS, then on track 350° to HYANS, then on track 350° to HAGOL, thence. . . .

TAKEOFF RUNWAY 18C: Climb on heading 186° to 1400, then direct FLOEE, then on track 264° to MIPIE, then on track 317° to HERMM, then on track 007° to AMMOT, then on track 036° to HAGOL, thence. . . .

TAKEOFF RUNWAY 18R: Climb on heading 186° to intercept course 202° to FANSA, then on track 261° to MIPIE, then on track 317° to HERMM, then on track 007° to AMMOT, then on track 036° to HAGOL, thence. . . .

TAKEOFF RUNWAY 27: Climb on heading 276° to 1400, then direct BONLE, then on track 360° to MACOD, then on track 047° to HAGOL, thence. . . .

TAKEOFF RUNWAY 36L: Climb on heading 006° to intercept course 327° to CIGMA, then on track 017° to DJOHN, then on track 020° to HAGOL, thence. . . .

TAKEOFF RUNWAY 36C: Climb on heading 006° to intercept course 327° to CIGMA, then on track 017° to DJOHN, then on track 020° to HAGOL, thence. . . .

TAKEOFF RUNWAY 36R: Climb on heading 006° to 1400, then direct HAGSS, then on track 012° to HAGOL, thence. . . .

. . . .Turbojets: maintain 5000, all other aircraft: maintain 4000.  
Expect clearance to filed altitude within ten minutes after departure.

PLASH TRANSITION (HAGOL5.PLASH)

RINTE TRANSITION (HAGOL5.RINTE)

SE-1, 16 APR 2026 to 14 MAY 2026

SE-1, 16 APR 2026 to 14 MAY 2026