

LOC/DME I-CJN <b>110.75</b> Chan <b>44</b> (Y)	APP CRS <b>186°</b>	Rwy Ldg TDZE <b>868</b> Apt Elev <b>896</b>
--	------------------------	---

# ILS RWY 18R (CAT II)

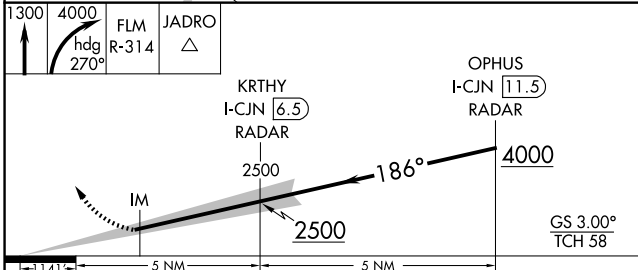
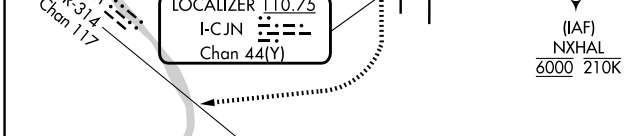
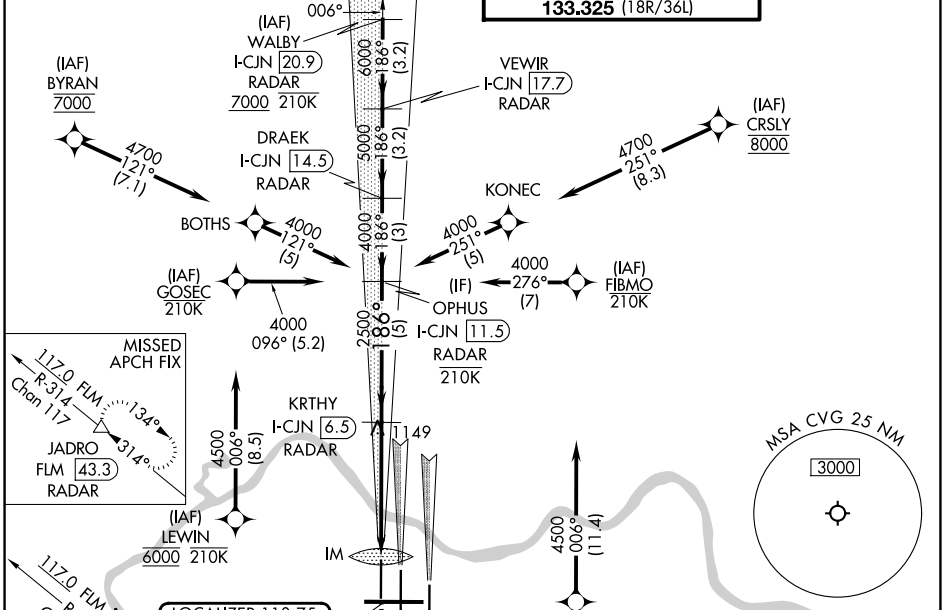
CINCINNATI/NORTHERN KENTUCKY INTL (CVG)

RNP APCH - GPS. From BYRAN, CRSLY, GOSEC, FIBMO, LEWIN and NXHAL.  
DME or RADAR required. RADAR required for procedure entry at WALBY.

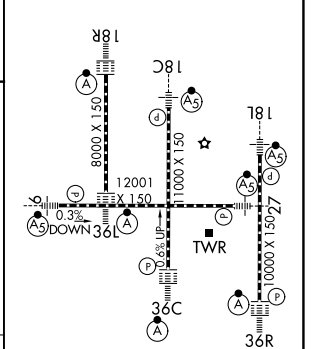
ALSF-2  
MISSED APPROACH: Climb to 1300 then climbing right turn to 4000 on heading 270° and FLM VOR/DME R-314 to JADRO/FLM 43.3 DME/RADAR and hold.

Simultaneous approach authorized with Rwy 18L/C.  
Use of FD or AP required during simultaneous operations.

D-ATIS <b>134.375</b>	CINCINNATI APP CON <b>119.7 363.15</b> (090°-269°) <b>123.875 363.15</b> (270°-089°)	CINCINNATI TOWER <b>118.975 360.85</b> (18L/36R) <b>118.3</b> (9/27, 18C/36C) <b>133.325</b> (18R/36L)	GND CON <b>121.7</b>
--------------------------	--	---	-------------------------



ELEV 896	<b>D</b>	TDZE 868
----------	----------	----------



CATEGORY	A	B	C	D
S-ILS 18R		RA 113/12	100	DA 968
<b>CATEGORY II ILS - SPECIAL AIRCREW &amp; AIRCRAFT CERTIFICATION REQUIRED</b>				

HIRL all rwys  
TDZL/RCLS all rwys except 27

SE-1, 16 APR 2026 to 14 MAY 2026

SE-1, 16 APR 2026 to 14 MAY 2026