

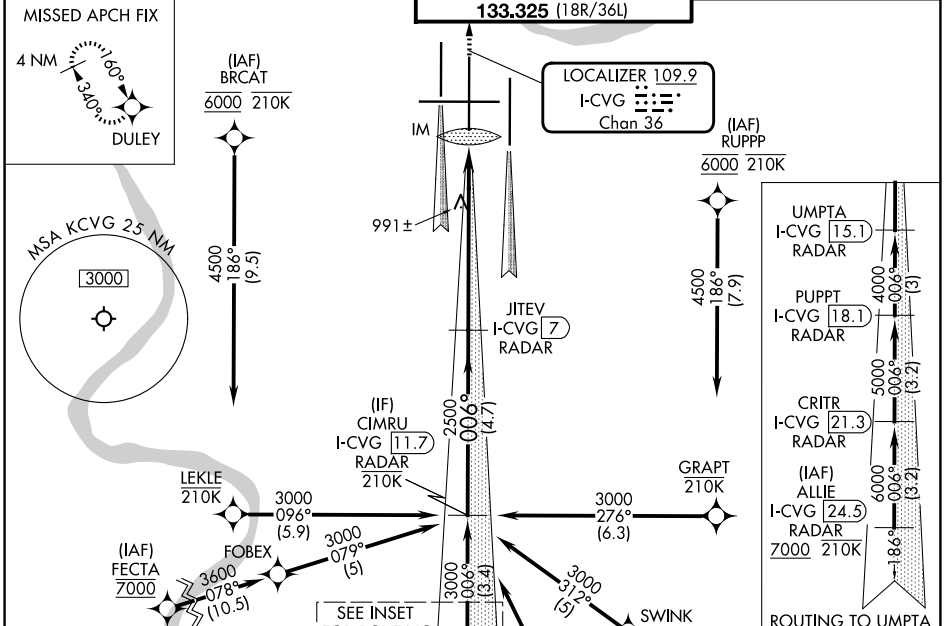
LOC/DME I-CVG <b>109.9</b> Chan <b>36</b>	APP CRS <b>006°</b>	Rwy Ldg TDZE Apt Elev	<b>11000</b> <b>850</b> <b>896</b>
---	------------------------	-----------------------------	--

# ILS RWY 36C (CAT II & III)

CINCINNATI/NORTHERN KENTUCKY INTL (CVG)

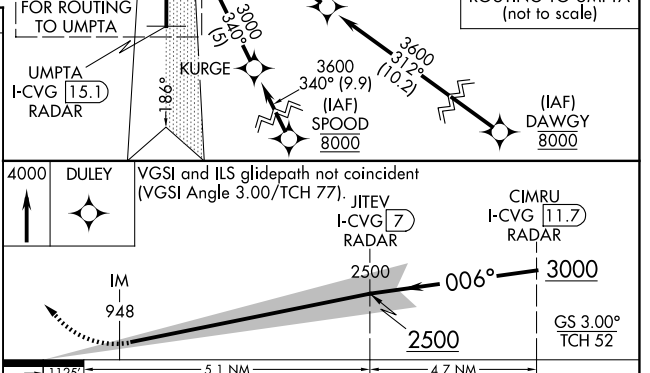
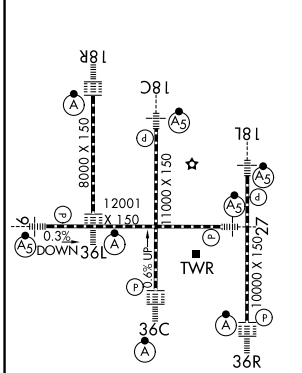
RNP APCH - GPS. Simultaneous approach authorized.	ALSIF-2 	MISSED APPROACH: Climb to 4000 direct DULEY and hold, continue climb-in-hold to 4000.
--	-------------	---

D-ATIS <b>134.375</b>	CINCINNATI APP CON <b>119.7 363.15</b> (090°-269°) <b>123.875 363.15</b> (270°-089°)	CINCINNATI TOWER <b>118.975 360.85</b> (18L/36R) <b>118.3</b> (18C/36C, 9/27) <b>133.325</b> (18R/36L)	GND CON <b>121.7</b>
--------------------------	--	---	-------------------------



ELEV 896	<b>D</b>	TDZE 850
----------	----------	----------

TDZL/RCLS all rws except 27  
HIRL all rws



CATEGORY	A	B	C	D
S-ILS-36C	CAT II RA 130/12		100 DA 950	
S-ILS 36C	CAT III		RVR 06	

**CATEGORY II & III ILS - SPECIAL AIRCREW & AIRCRAFT CERTIFICATION REQUIRED**

SE-1, 16 APR 2026 to 14 MAY 2026

SE-1, 16 APR 2026 to 14 MAY 2026