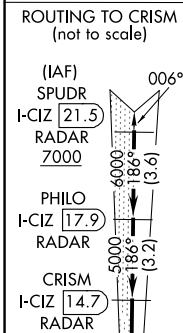
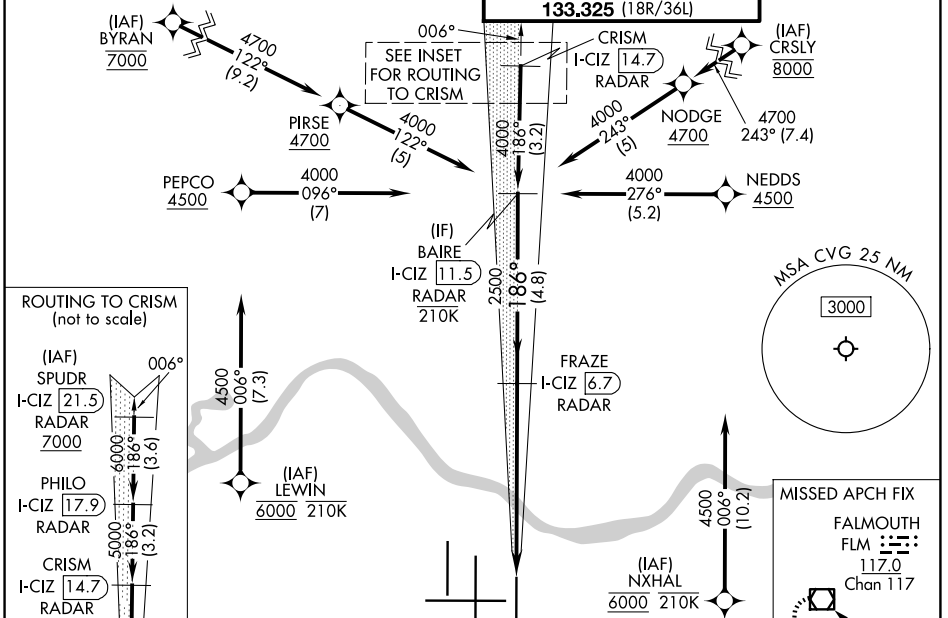


LOC/DME I-CIZ <b>110.15</b> Chan <b>38</b> (Y)	APP CRS <b>186°</b>	Rwy Ldg <b>10000</b> TDZE <b>889</b> Apt Elev <b>896</b>
--	------------------------	--

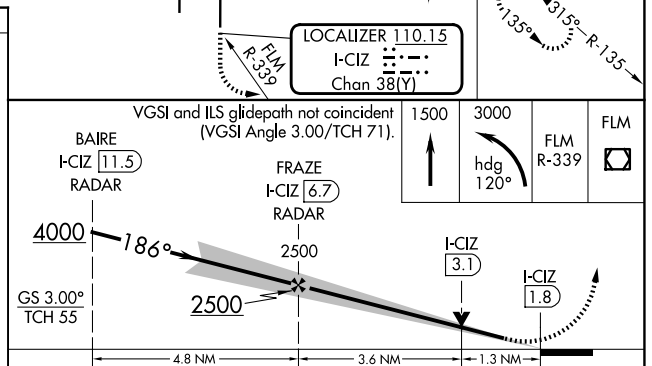
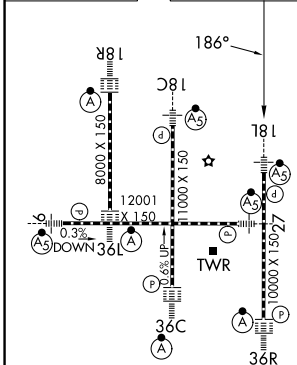
# ILS or LOC RWY 18L

CINCINNATI/NORTHERN KENTUCKY INTL (CVG)

RNP APCH - GPS. From BYRAN, CRSLY, LEWIN, or NXHAL.	MALSR 	MISSED APPROACH: Climb to 1500 then climbing left turn to 3000 on heading 120° and FLM VOR/DME R-339 to FLM VOR/DME and hold.
DME or RADAR required. RADAR required for procedure entry at SPUDR.		
Simultaneous approach authorized. For inop ALS, increase S-LOC 18L Cat C and D visibility to 1 1/8 SM. NA		
D-ATIS <b>134.375</b>	CINCINNATI APP CON <b>119.7 363.15</b> (090°-269°) <b>123.875 363.15</b> (270°-089°)	CINCINNATI TOWER <b>118.975 360.85</b> (18L/36R) <b>118.3</b> (9/27, 18C/36C) <b>133.325</b> (18R/36L)
		GND CON <b>121.7</b>



ELEV 896	<b>D</b>	TDZE 889
----------	----------	----------



CATEGORY	A	B	C	D
S-ILS 18L	1089/18 200 (200-1/2)			
S-LOC 18L	1360/24	471 (500-1/2)	1360/50	471 (500-1)
CIRCLING	1460-1 564 (600-1)		1560-1 3/4 664 (700-1 3/4)	1560-2 664 (700-2)

SE-1, 16 APR 2026 to 14 MAY 2026

SE-1, 16 APR 2026 to 14 MAY 2026