


LOC I-JDP 108.7	APP CRS 276°	Rwy Ldg 12000 TDZE 875 Apt Elev 896
---------------------------	------------------------	--

ILS or LOC RWY 27

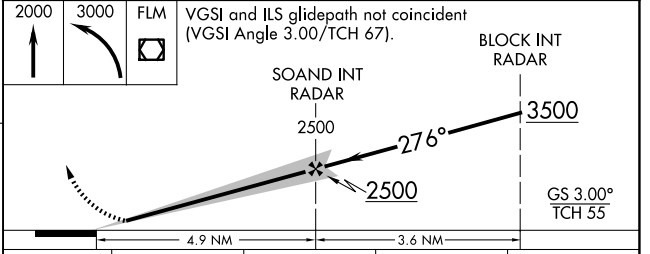
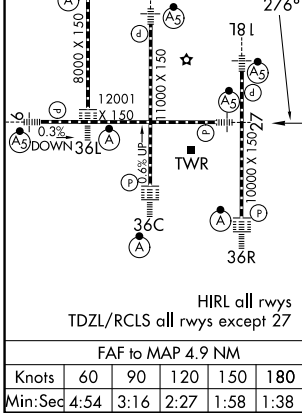
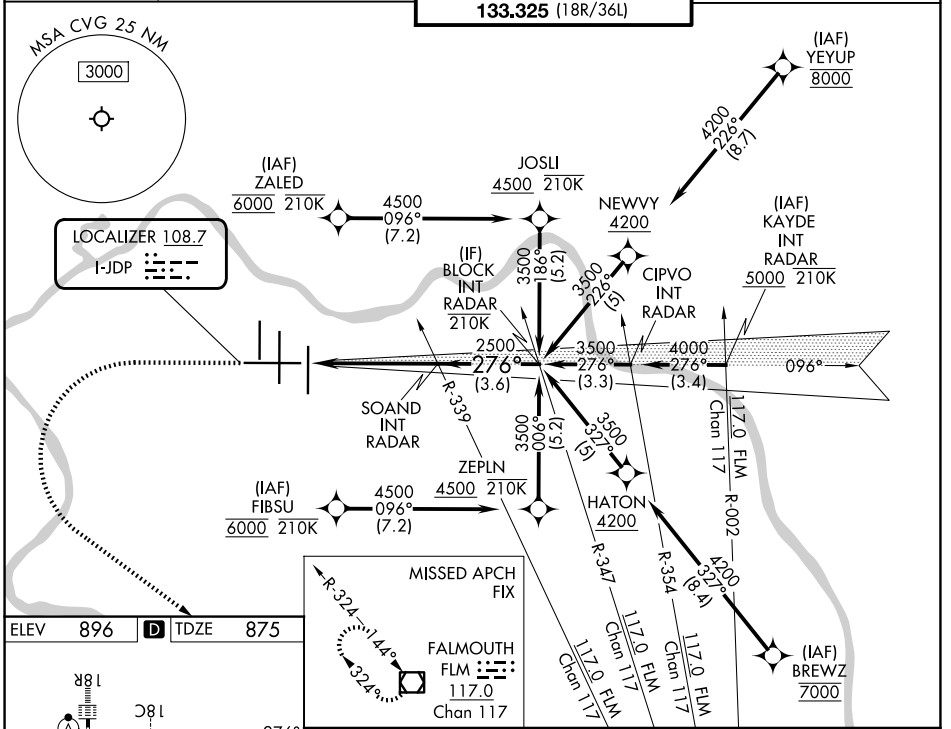
CINCINNATI/NORTHERN KENTUCKY INTL (CVG)

RNP APCH - GPS. From FIBSU, BREWZ, ZALED or YEYUP.
 RADAR required for procedure entry at KAYDE.
 ▼ For inop ALS, increase S-LOC 27 Cat C/D visibility to 1 $\frac{3}{8}$ SM.
 *RVR 1800 authorized with use of FD or AP or HUD to DA.

MALS 

MISSED APPROACH: Climb to 2000 then climbing left turn to 3000 direct FLM VOR/DME and hold.

D-ATIS 134.375	CINCINNATI APP CON 119.7 363.15 (090°-269°) 123.875 363.15 (270°-089°)	CINCINNATI TOWER 118.975 360.85 (18L/36R) 118.3 (9/27, 18C/36C) 133.325 (18R/36L)	GND CON 121.7
--------------------------	--	---	-------------------------



CATEGORY	A	B	C	D
S-ILS 27*	1075/24 200 (200- $\frac{1}{2}$)			
S-LOC 27	1340/24	465 (500- $\frac{1}{2}$)	1340/50	465 (500-1)
CIRCLING	1460-1	564 (600-1)	1560-1 $\frac{3}{4}$ 664 (700-1 $\frac{3}{4}$)	1560-2 664 (700-2)

SE-1, 16 APR 2026 to 14 MAY 2026

SE-1, 16 APR 2026 to 14 MAY 2026