

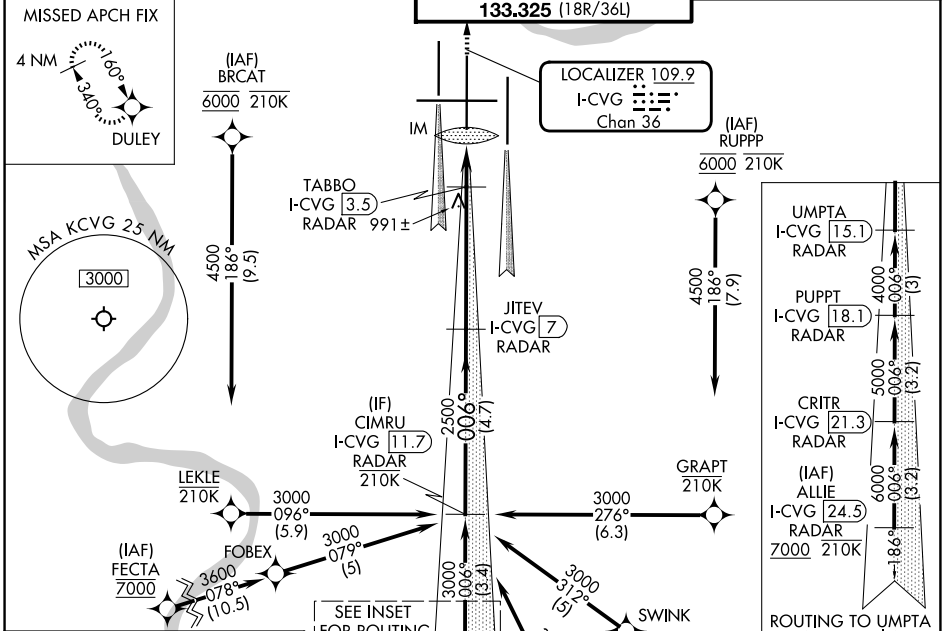
LOC/DME I-CVG <b>109.9</b> Chan <b>36</b>	APP CRS <b>006°</b>	Rwy Ldg <b>11000</b> TDZE <b>850</b> Apt Elev <b>896</b>
---	------------------------	--

# ILS or LOC RWY 36C

CINCINNATI/NORTHERN KENTUCKY INTL (CVG)

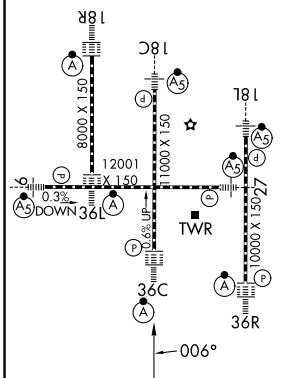
RNP APCH - GPS.	ALSF-2	MISSED APPROACH: Climb to 4000 direct DULEY and hold, continue climb-in-hold to 4000.
▼ For inop ALS, increase S-LOC 36C Cats C and D visibility to RVR 6000. Simultaneous approach authorized.		

D-ATIS <b>134.375</b>	CINCINNATI APP CON <b>119.7 363.15</b> (090°-269°) <b>123.875 363.15</b> (270°-089°)	CINCINNATI TOWER <b>118.975 360.85</b> (18L/36R) <b>118.3</b> (9/27, 18C/36C) <b>133.325</b> (18R/36L)	GND CON <b>121.7</b>
--------------------------	--	---	-------------------------



ELEV 896	<b>D</b>	TDZE 850
----------	----------	----------

TDZL/RCLS all rwys except 27  
HIRL all rwys



VGSI and ILS glidepath not coincident (VGSI Angle 3.00/TCH 77).

JITEV I-CVG [7] RADAR

CIMRU I-CVG [11.7] RADAR

4000 DULEY

TABBO I-CVG [3.5] RADAR

I-CVG [2]

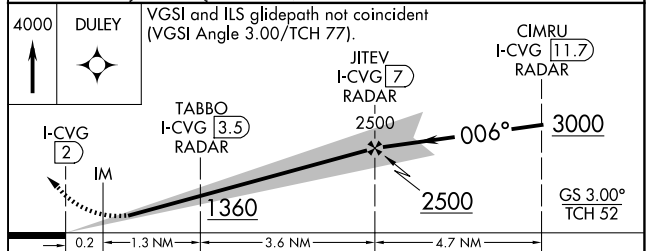
IM

2500

006°

3000

GS 3.00° TCH 52



CATEGORY	A	B	C	D
S-ILS 36C	1050/18 200 (200-½)			
S-LOC 36C	1260/24	410 (400-½)	1260/40	410 (400-¾)
CIRCLING	1460-1	564 (600-1)	1560-1¾	1560-2
			664 (700-1¾)	664 (700-2)

FAF to MAP 5.1 NM

Knots	60	90	120	150	180
Min:Sec	5:06	3:24	2:33	2:02	1:42

SE-1, 16 APR 2026 to 14 MAY 2026

SE-1, 16 APR 2026 to 14 MAY 2026