

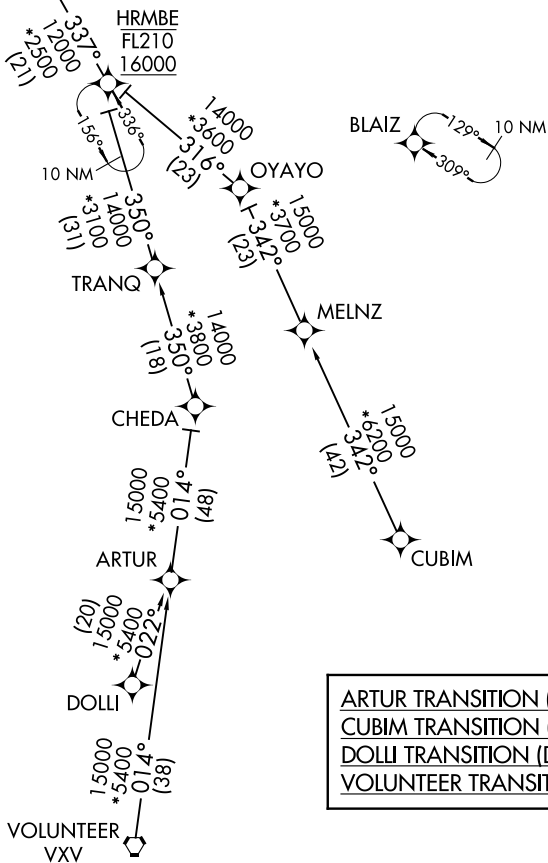
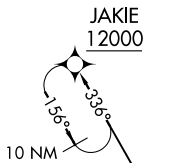
# JAKIE SEVEN ARRIVAL (RNAV) Transition Routes

COVINGTON, KENTUCKY

CINCINNATI APP CON  
 119.7 254.25  
 CVG D-ATIS  
 134.375  
 LUK ATIS  
 123.6

RNAV 1 - DME/DME/IRU or GPS.  
 RADAR required.

See following  
 page for  
 arrival routes.



ARTUR TRANSITION (ARTUR.JAKIE7)  
CUBIM TRANSITION (CUBIM.JAKIE7)  
DOLLI TRANSITION (DOLLI.JAKIE7)  
VOLUNTEER TRANSITION (VXX.JAKIE7)

(CONTINUED ON FOLLOWING PAGE)

NOTE: Chart not to scale.

# JAKIE SEVEN ARRIVAL (RNAV) Transition Routes

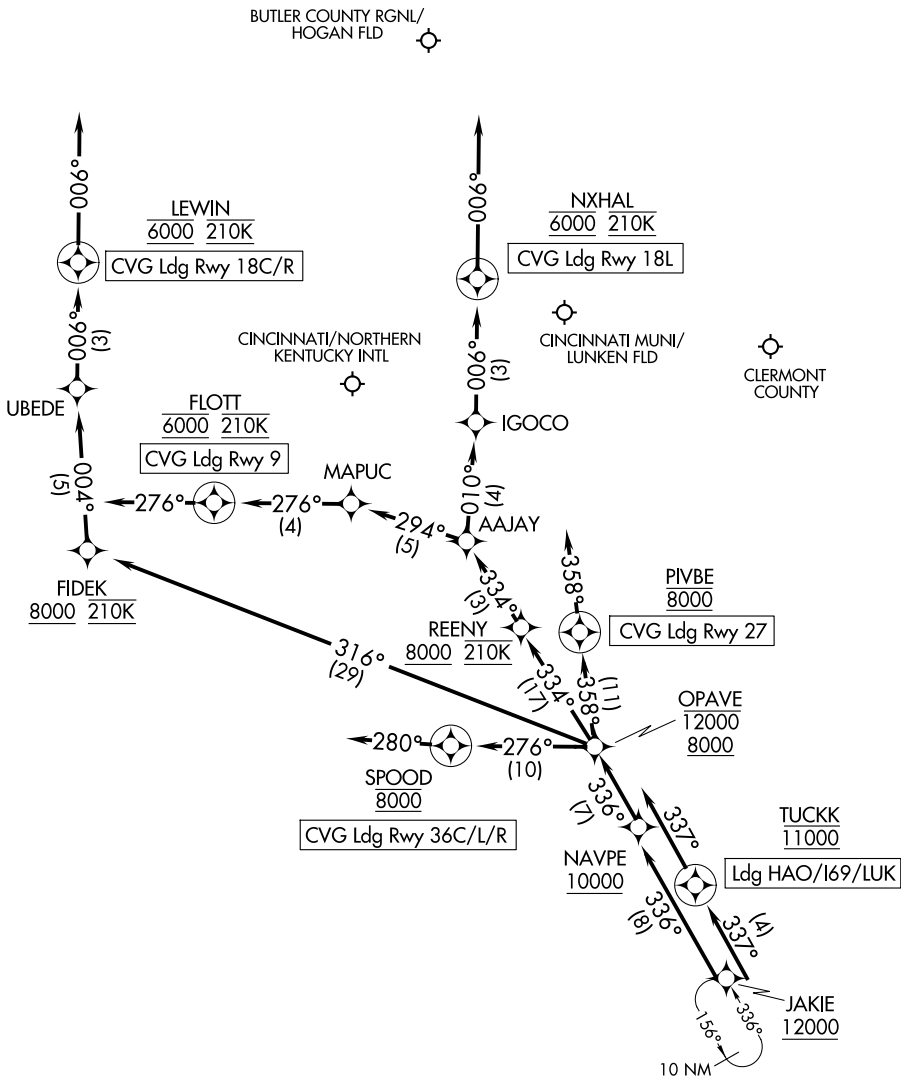
COVINGTON, KENTUCKY

# JAKIE SEVEN ARRIVAL (RNAV) Arrival Routes

COVINGTON, KENTUCKY

CINCINNATI APP CON  
 119.7 254.25  
 CVG D-ATIS  
 134.375  
 LUK ATIS  
 123.6

RNAV 1 - DME/DME/IRU or GPS.  
 RADAR required.



SE-1, 16 APR 2026 to 14 MAY 2026

SE-1, 16 APR 2026 to 14 MAY 2026

(CONTINUED ON FOLLOWING PAGE)

NOTE: Chart not to scale.

# JAKIE SEVEN ARRIVAL (RNAV) Arrival Routes

COVINGTON, KENTUCKY

# JAKIE SEVEN ARRIVAL (RNAV)

COVINGTON, KENTUCKY

## ARRIVAL ROUTE DESCRIPTION

CVG: From JAKIE on track 336° to cross NAVPE at or above 10000, then on track 336° to cross OPAVE between 8000 and 12000.

LANDING CVG RUNWAY 9: From OPAVE on track 334° to cross REENY at or above 8000 and at 210K, then on track 334° to AAJAY, then on track 294° to MAPUC, then on track 276° to cross FLOTT at 6000 and at 210K, then on track 276°. Expect RADAR vectors to final approach course for ILS, GPS, or RNP Rwy 9 approach.

LANDING CVG RUNWAY 18L: From OPAVE on track 334° to cross REENY at or above 8000 and at 210K, then on track 334° to AAJAY, then on track 010° to IGOCO, then on track 006° to cross NXHAL at 6000 and at 210K, then on track 006°. Expect RADAR vectors to final approach course for ILS, GPS, or RNP Rwy 18L approach.

LANDING CVG RUNWAYS 18C/R: From OPAVE on track 316° to cross FIDEK at or above 8000 and at 210K, then on track 004° to UBEDE, then on track 006° to cross LEWIN at 6000 and at 210K, then on track 006°. Expect RADAR vectors to final approach course for ILS, GPS, or RNP Rwy 18C/R approach.

LANDING CVG RUNWAY 27: From OPAVE on track 358° to cross PIVBE at 8000, then on track 358°. Expect RADAR vectors to final approach course for ILS, GPS, or RNP Rwy 27 approach.

LANDING CVG RUNWAYS 36L/C/R: From OPAVE on track 276° to cross SPOOD at 8000, then on track 280°. Expect RADAR vectors to final approach course for ILS, GPS, or RNP Rwy 36L/C/R approach.

LANDING I69/LUK/HAO: From JAKIE on track 337° to cross TUCKK at 11000, then on track 337°. Expect RADAR vectors to final approach course.

SE-1, 16 APR 2026 to 14 MAY 2026

SE-1, 16 APR 2026 to 14 MAY 2026

COVINGTON, KENTUCKY