

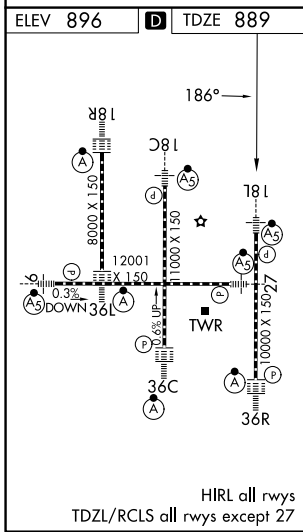
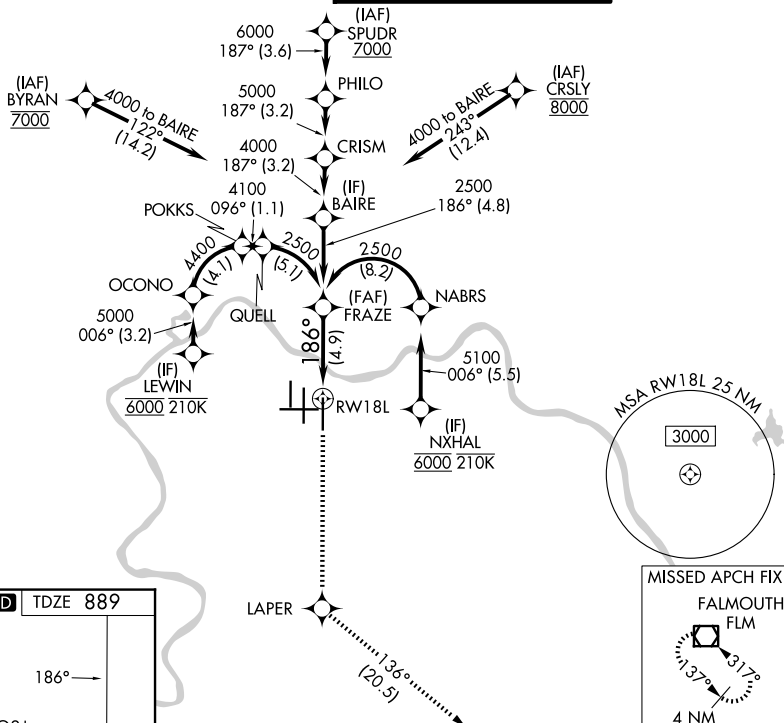
APP CRS	Rwy Ldg	10000
186°	TDZE	889
	Apt Elev	896

RNAV (RNP) Z RWY 18L

CINCINNATI/NORTHERN KENTUCKY INTL (CVG)

RNP AR APCH - GPS. Authorization required. From NABRS or OCONO: RF.		MALSR 	MISSED APPROACH: Climb to 3000 direct LAPER and on track 136° to FLM VOR/DME and hold.
For uncompensated Baro-VNAV systems, procedure NA below -13°C or above 54°C. For inop ALS, increase RNP 0.25 all Cats visibility to 5500 and increase RNP 0.30 all Cats visibility to 1 3/8 SM. Simultaneous approach authorized.			

D-ATIS 134.375	CINCINNATI APP CON 119.7 363.15 (090°-269°) 123.875 363.15 (270°-089°)	CINCINNATI TOWER 118.975 360.85 (18L/36R) 118.3 (9/27, 18C/36C) 133.325 (18R/36L)	GND CON 121.7
--------------------------	--	---	-------------------------



3000	LAPER	tr 136°	FLM	VGSI and RNAV glidepath not coincident (VGSI Angle 3.00/TCH 71).
See planview for multiple IF locations.				
				GP 3.00° TCH 55
CATEGORY	A	B	C	D
RNP 0.25 DA		1240/30	351 (400-5%)	
RNP 0.30 DA		1388/50	499 (500-1)	

AUTHORIZATION REQUIRED

SE-1, 16 APR 2026 to 14 MAY 2026

SE-1, 16 APR 2026 to 14 MAY 2026