

RNAV (RNP) Z RWY 27

CINCINNATI/NORTHERN KENTUCKY INTL (CVG)

APP CRS	Rwy Ldg	12000
276°	TDZE	875
	Apt Elev	896

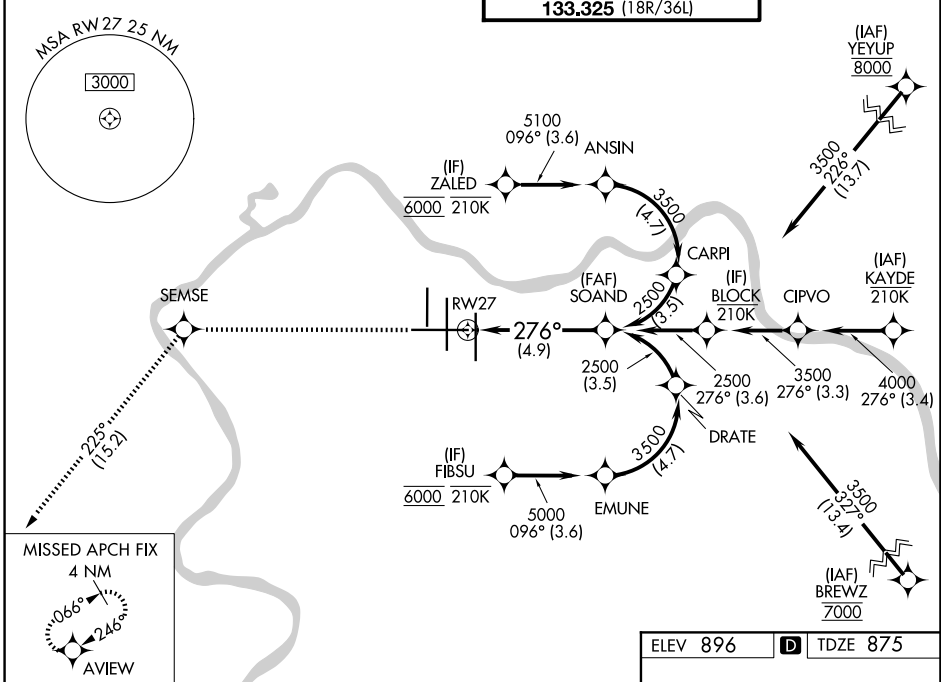
RNP AR APCH - GPS. Authorization required. From FIBSU or ZALD: RF.



MISSED APPROACH: Climb to 3000 direct SEMSE and on track 225° to AVIEW and hold.

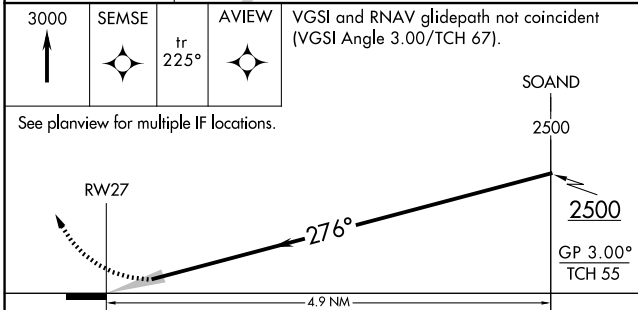
For uncompensated Baro-VNAV systems, procedure NA below -13°C or above 54°C. For inop ALS, increase RNP 0.15 all Cats visibility to RVR 5500, increase RNP 0.3 all Cats visibility to 1 3/8 SM.

D-ATIS 134.375	CINCINNATI APP CON 119.7 363.15 (090°-269°) 123.875 363.15 (270°-089°)	CINCINNATI TOWER 118.975 360.85 (18L/36R) 118.3 (9/27, 18C/36C) 133.325 (18R/36L)	GND CON 121.7
--------------------------	--	--	-------------------------

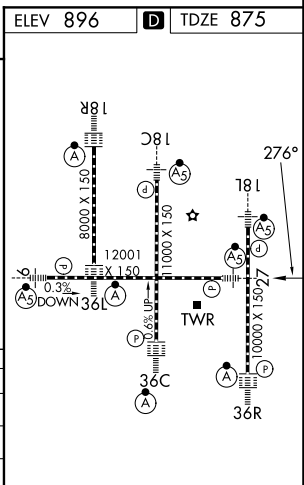


SE-1, 16 APR 2026 to 14 MAY 2026

SE-1, 16 APR 2026 to 14 MAY 2026



CATEGORY	A	B	C	D
RNP 0.15 DA		1244/35	369 (400-5%)	
RNP 0.23 DA		1260/35	385 (400-5%)	
RNP 0.30 DA		1364/50	489 (500-1)	



AUTHORIZATION REQUIRED

HIRL all rwys
TDZL/RCLS all rwys except 27