

APP CRS	Rwy Ldg	8000
006°	TDZE	873
	Apt Elev	896

RNAV (RNP) Z RWY 36L

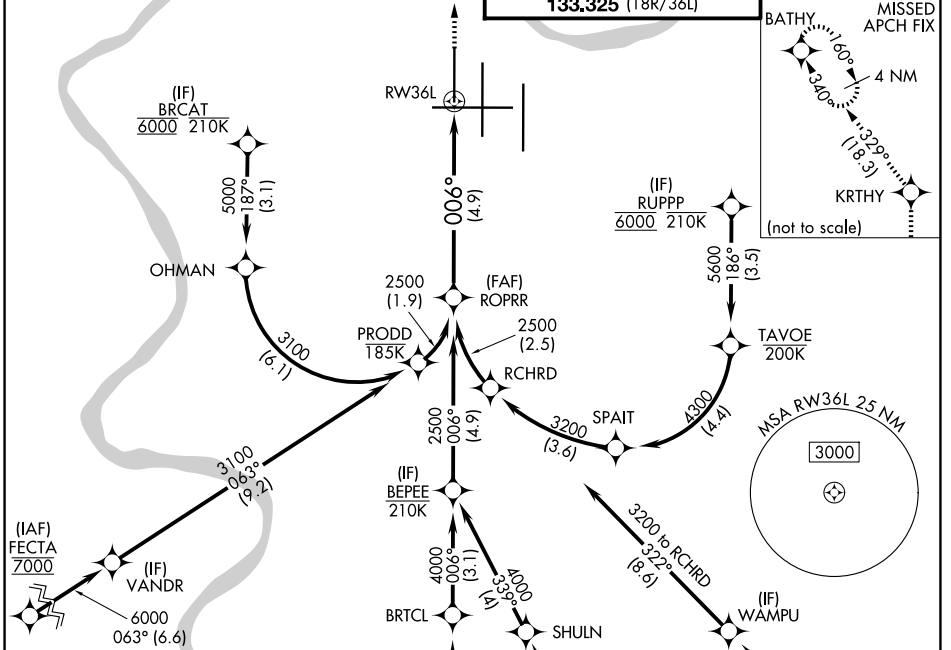
CINCINNATI/NORTHERN KENTUCKY INTL (CVG)

RNP AR APCH - GPS. Authorization required. From OHMAN, PRODD, RCHRD, or TAVOE: RF. ALSIF-2

For uncompensated Baro-VNAV systems, procedure NA below -13°C or above 54°C. Simultaneous approach authorized.

MISSED APPROACH: Climb to 3000 direct KRTHY and on track 329° to BATHY and hold.

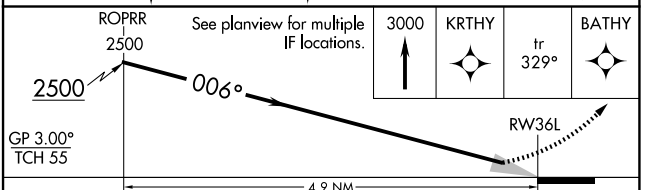
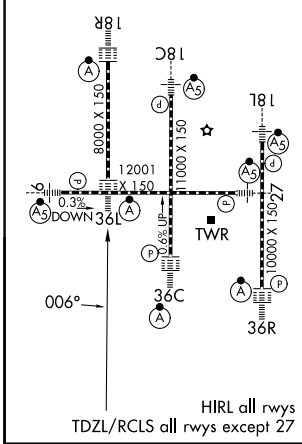
D-ATIS 134.375	CINCINNATI APP CON 119.7 363.15 (090°-269°) 123.875 363.15 (270°-089°)	CINCINNATI TOWER 118.975 360.85 (18L/36R) 118.3 (9/27, 18C/36C) 133.325 (18R/36L)	GND CON 121.7
--------------------------	--	---	-------------------------



SE-1, 16 APR 2026 to 14 MAY 2026

SE-1, 16 APR 2026 to 14 MAY 2026

ELEV 896		TDZE 873
----------	--	----------



GP 3.00° TCH 55				
CATEGORY	A	B	C	D
RNP 0.15 DA	1205/26		332 (400-1/2)	
RNP 0.30 DA	1270/35		397 (400-5/8)	

AUTHORIZATION REQUIRED