

APP CRS	Rwy Ldg	11640
096°	TDZE	883
	Apt Elev	896


RNAV (RNP) Z RWY 9

CINCINNATI/NORTHERN KENTUCKY INTL (CVG)

RNP AR APCH - GPS. Authorization required. From FLOTT or IDULE: RF.

For uncompensated Baro-VNAV systems, procedure NA below -13°C or above 54°C.

MALSR



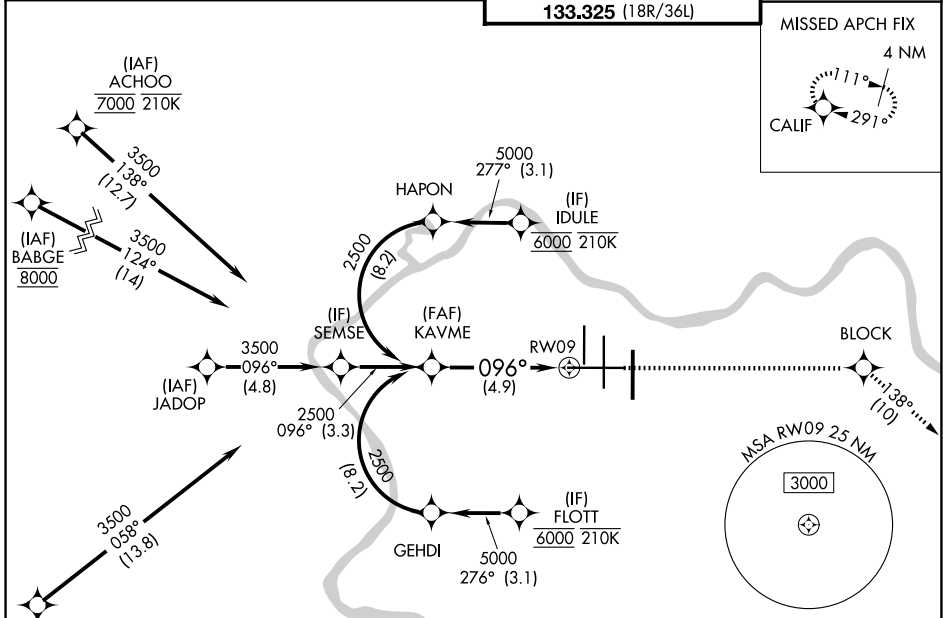
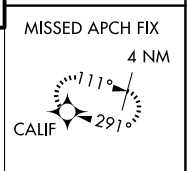
MISSED APPROACH: Climb to 3000 direct BLOCK and on track 138° to CALIF and hold.

D-ATIS
134.375

CINCINNATI APP CON
119.7 363.15 (090°-269°)
123.875 363.15 (270°-089°)

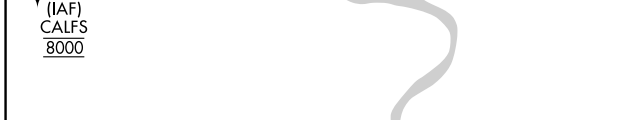
CINCINNATI TOWER
118.975 360.85 (18L/36R)
118.3 (9/27, 18C/36C)
133.325 (18R/36L)

GND CON
121.7



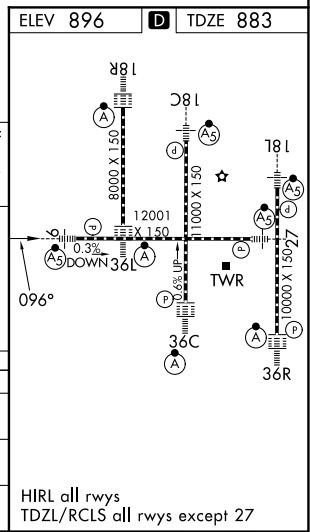
SE-1, 16 APR 2026 to 14 MAY 2026

SE-1, 16 APR 2026 to 14 MAY 2026



	3000	BLOCK	tr 138°	CALIF
GP 3.00°				
TCH 52				
	4.9 NM			

See planview for multiple IF locations.



CATEGORY	A	B	C	D
RNP 0.18 DA		1205/26	322 (400-½)	
RNP 0.30 DA		1275/35	392 (400-¾)	

AUTHORIZATION REQUIRED

HIRL all rwy's
TDZL/RCLS all rwy's except 27