

WAAS CH 58099 W18D	APP CRS 186°	Rwy Ldg TDZE Apt Elev	8000 868 896
--	------------------------	-----------------------------	---

RNAV (GPS) Y RWY 18R

CINCINNATI/NORTHERN KENTUCKY INTL (CVG)

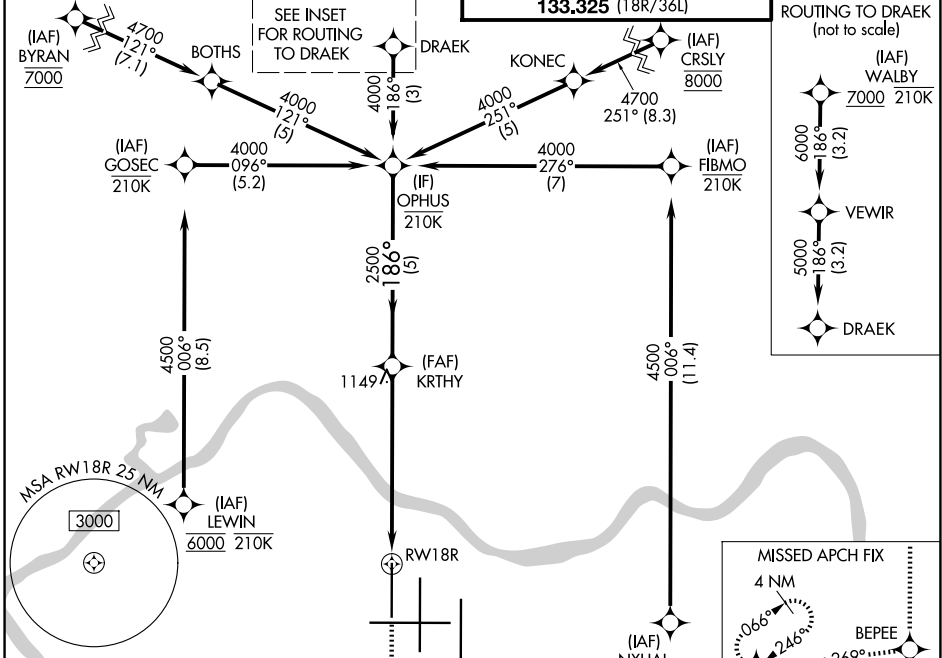
RNP APCH - GPS.

For uncompensated Baro-VNAV systems, LNAV/VNAV NA below -13°C or above 54°C. Simultaneous approach authorized with Rwy 18L/C. LNAV procedure NA during simultaneous operations. Use of FD or AP required during simultaneous operations. For inop ALS, increase LNAV/VNAV all Cats visibility to RVR 5500 and LNAV Cats C and D visibility to 1 $\frac{1}{2}$ SM.

ALSF-2

MISSED APPROACH: Climb to 3000 direct BEPEE and on track 269° to AVIEW and hold.

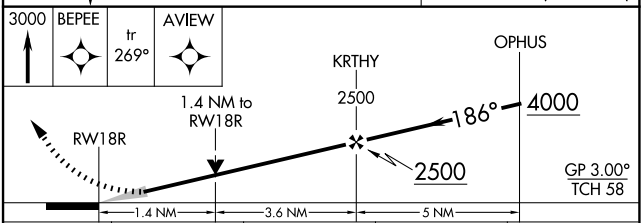
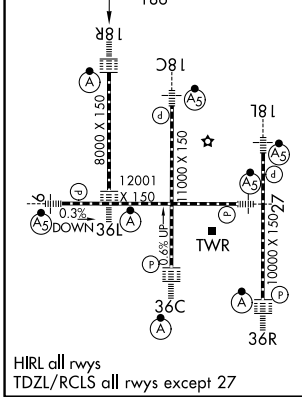
D-ATIS 134.375	CINCINNATI APP CON 119.7 363.15 (090°-269°) 123.875 363.15 (270°-089°)	CINCINNATI TOWER 118.975 360.85 (18L/36R) 118.3 (9/27, 18C/36C) 133.325 (18R/36L)	GND CON 121.7
--------------------------	--	---	-------------------------



SE-1, 16 APR 2026 to 14 MAY 2026

SE-1, 16 APR 2026 to 14 MAY 2026

ELEV 896	D	TDZE 868
----------	----------	----------



CATEGORY	A	B	C	D
LPV DA		1068/18	200 (200- $\frac{1}{2}$)	
LNAV/VNAV DA		1214/30	346 (400- $\frac{5}{8}$)	
LNAV MDA	1360/24	492 (500- $\frac{1}{2}$)	1360/50	492 (500-1)
CIRCLING	1460-1	564 (600-1)	1560-1 $\frac{3}{4}$ 664 (700-1 $\frac{3}{4}$)	1560-2 664 (700-2)