

WAAS CH 86809 W27A	APP CRS 276°	Rwy Ldg 12000 TDZE 875 Apt Elev 896
--	------------------------	--

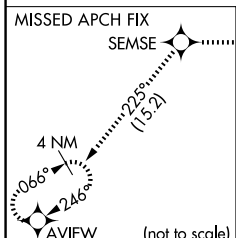
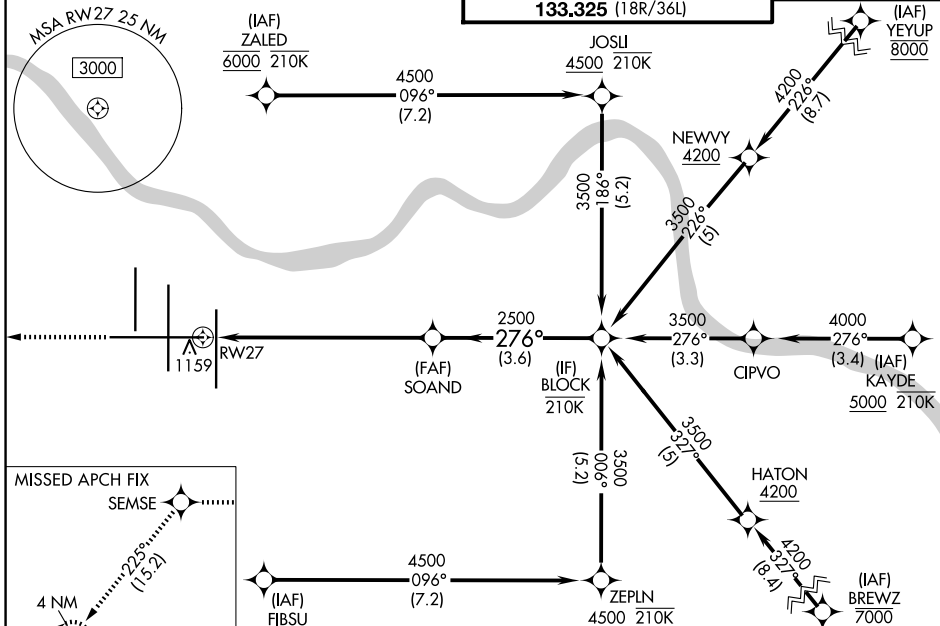
RNAV (GPS) Y RWY 27

CINCINNATI/NORTHERN KENTUCKY INTL (CVG)

RNP APCH - GPS. MALSR MISSED APPROACH: Climb to 3000 direct SEMSE then on track 225° to AVIEW and hold.

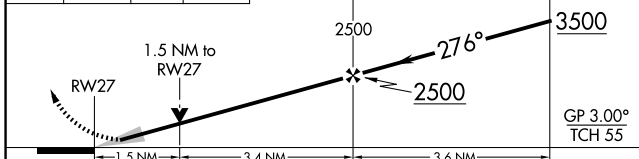
For uncompensated Baro-VNAV systems, LNAV/VNAV NA below -13°C or above 54°C. * RVR 1800 authorized with use of FD or AP or HUD to DA.

D-ATIS 134.375	CINCINNATI APP CON 119.7 363.15 (090°-269°) 123.875 363.15 (270°-089°)	CINCINNATI TOWER 118.975 360.85 (18L/36R) 118.3 (9/27, 18C/36C) 133.325 (18R/36L)	GND CON 121.7
--------------------------	--	---	-------------------------



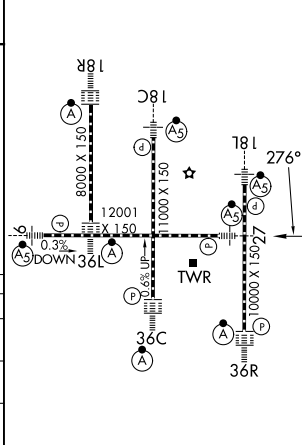
3000 SEMSE AVIEW
Tr 225°

VGSI and RNAV glidepath not coincident (VGSI Angle 3.00/TCH 67).



CATEGORY	A	B	C	D
LPV DA*	1075/24		200 (200-½)	
LNAV/VNAV DA	1320/45		445 (500-¾)	
LNAV MDA	1420/24	545 (600-½)	1420/60	545 (600-1¼)
CIRCLING	1460-1	564 (600-1)	1560-1¾ 664 (700-1¾)	1560-2 664 (700-2)

ELEV 896 TDZE 875



HIRL all rwys
TDZL/RCLS all rwys except 27

SE-1, 16 APR 2026 to 14 MAY 2026

SE-1, 16 APR 2026 to 14 MAY 2026