

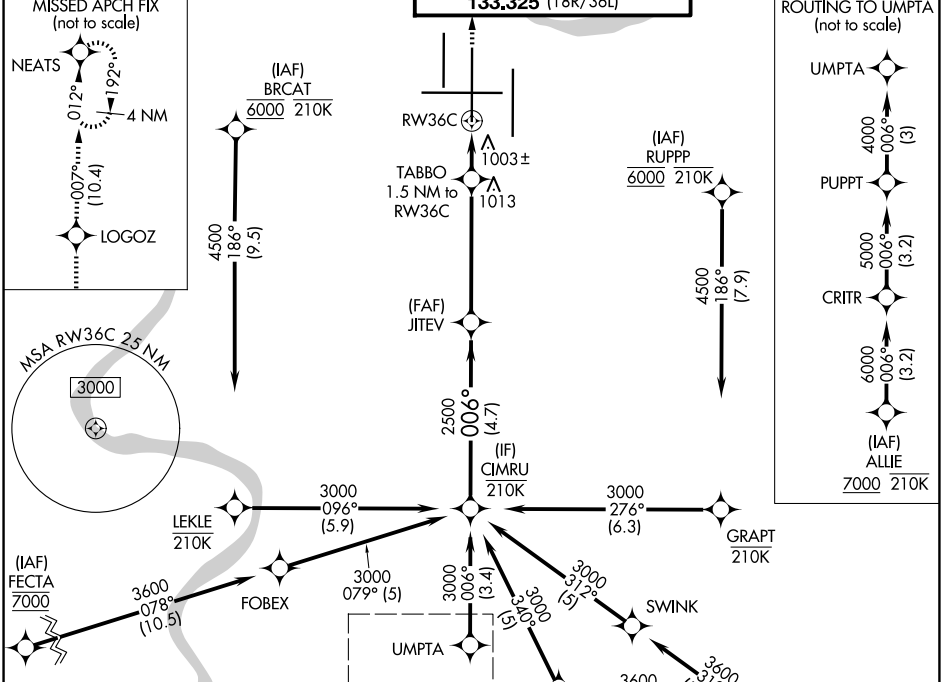
WAAS CH <b>97609</b> <b>W36B</b>	APP CRS <b>006°</b>	Rwy Ldg <b>11000</b> TDZE <b>850</b> Apt Elev <b>896</b>
--	------------------------	--

# RNAV (GPS) Y RWY 36C

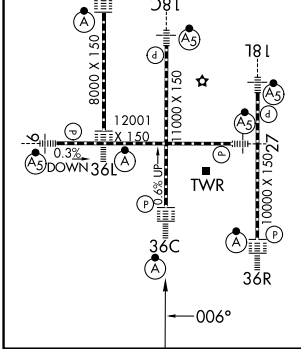
CINCINNATI/NORTHERN KENTUCKY INTL (CVG)

RNP APCH - GPS. ▼ For uncompensated Baro-VNAV systems, LNAV/VNAV NA below -13°C or above 54°C. Use of FD or AP required during simultaneous operations. Simultaneous approach authorized. LNAV procedure NA during simultaneous operations. For inop ALS, increase LNAV/VNAV visibility all Cats and LNAV Cat C and D visibility to RVR 6000.	ALSF-2 	MISSED APPROACH: Climb to 3000 direct LOGOZ and on track 007° to NEATS and hold.
--	------------	--

D-ATIS <b>134.375</b>	CINCINNATI APP CON <b>119.7 363.15</b> (090°-269°) <b>123.875 363.15</b> (270°-089°)	CINCINNATI TOWER <b>118.975 360.85</b> (18L/36R) <b>118.3</b> (9/27, 18C/36C) <b>133.325</b> (18R/36L)	GND CON <b>121.7</b>
--------------------------	--	---	-------------------------



ELEV 896	<b>D</b>	TDZE 850
TDZL/RCLS all rwy's except 27 HIRL all rwy's		



VGSI and RNAV glidepath not coincident (VGSI Angle 3.00/TCH 77).			
CIMRU	JITEV	TABBO	RW36C
3000	2500	1360	
GP 3.00°	TCH 52		
4.7 NM      3.6 NM      1.5 NM			
CATEGORY	A	B	C
LPV DA		1050/18	200 (200-1/2)
LNAV/VNAV DA		1260/40	410 (400-3/4)
LNAV MDA	1260/24	410 (400-1/2)	1260/40    410 (400-3/4)
CIRCLING	1460-1	564 (600-1)	1560-1 3/4    1560-2 664 (700-1 3/4)    664 (700-2)

SE-1, 16 APR 2026 to 14 MAY 2026

SE-1, 16 APR 2026 to 14 MAY 2026