

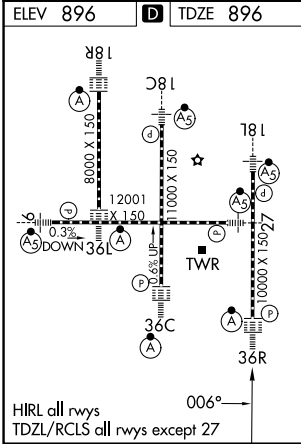
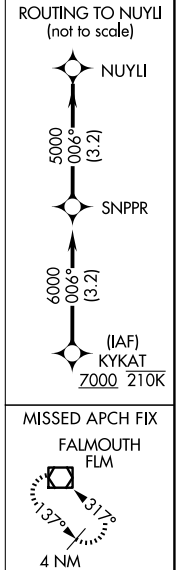
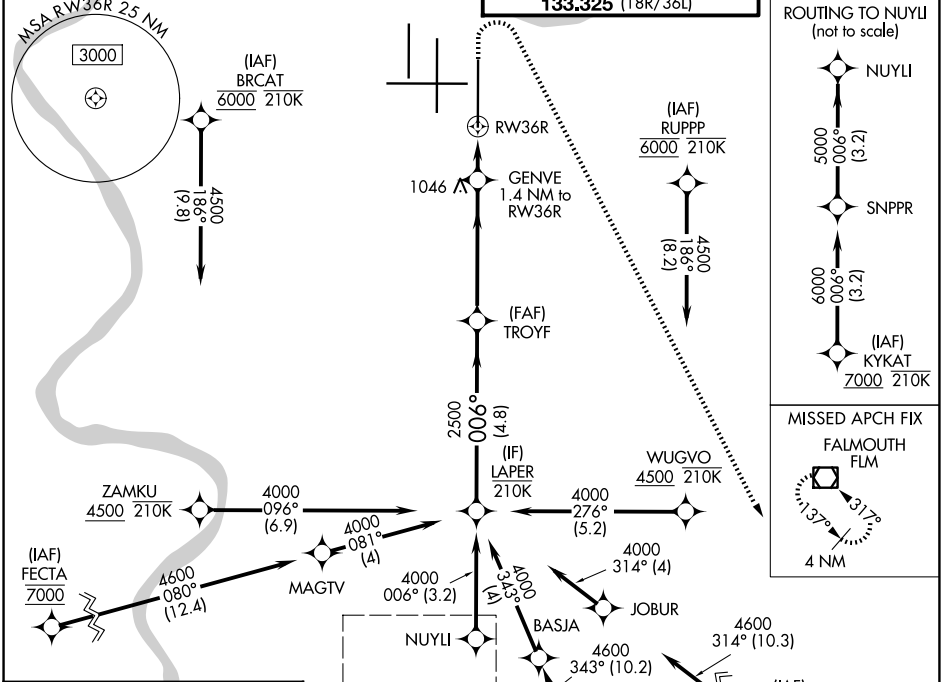
WAAS CH 42709	APP CRS 006°	Rwy Ldg TDZE 896	10000
W36D		Apt Elev 896	

RNAV (GPS) Y RWY 36R

CINCINNATI/NORTHERN KENTUCKY INTL (CVG)

RNP APCH - GPS.	<p>⚠ For uncompensated Baro-VNAV systems, LNAV/VNAV NA below -13°C or above 54°C. Simultaneous approach authorized. LNAV procedure NA during simultaneous operations. Use of FD or AP required during simultaneous operations. For inop ALS, increase LNAV Cats C and D visibility to 1½ SM.</p>	<p>ALSF-2</p>	<p>MISSED APPROACH: Climb to 1500 then climbing right turn to 4000 direct FLM VOR/DME and hold.</p>
-----------------	--	---------------	---

D-ATIS 134.375	CINCINNATI APP CON 119.7 363.15 (090°-269°) 123.875 363.15 (270°-089°)	CINCINNATI TOWER 118.975 360.85 (18L/36R) 118.3 (9/27, 18C/36C) 133.325 (18R/36L)	GND CON 121.7
--------------------------	--	---	-------------------------



SEE INSET FOR ROUTING TO NUYLI

LAPER	VGSI and RNAV glidepath not coincident (VGSI Angle 3.00/TCH 70).	1500	4000	FLM
4000	006°	2500	1380	
GP 3.00°	TCH 55			
		4.8 NM	3.5 NM	1.4 NM
CATEGORY	A	B	C	D
LPV DA	DA	1096/18	200 (200-½)	
LNAV/VNAV DA	DA	1340/45	444 (500-¾)	
LNAV MDA	1360/24	464 (500-½)	1360/50	464 (500-1)
CIRCLING	1460-1	564 (600-1)	1560-1¾ 664 (700-1¾)	1560-2 664 (700-2)

SE-1, 16 APR 2026 to 14 MAY 2026

SE-1, 16 APR 2026 to 14 MAY 2026