


WAAS CH 65709 W09A	APP CRS 096°	Rwy Ldg 11640 TDZE 883 Apt Elev 896
--	------------------------	--

RNAV (GPS) Y RWY 9

CINCINNATI/NORTHERN KENTUCKY INTL (CVG)

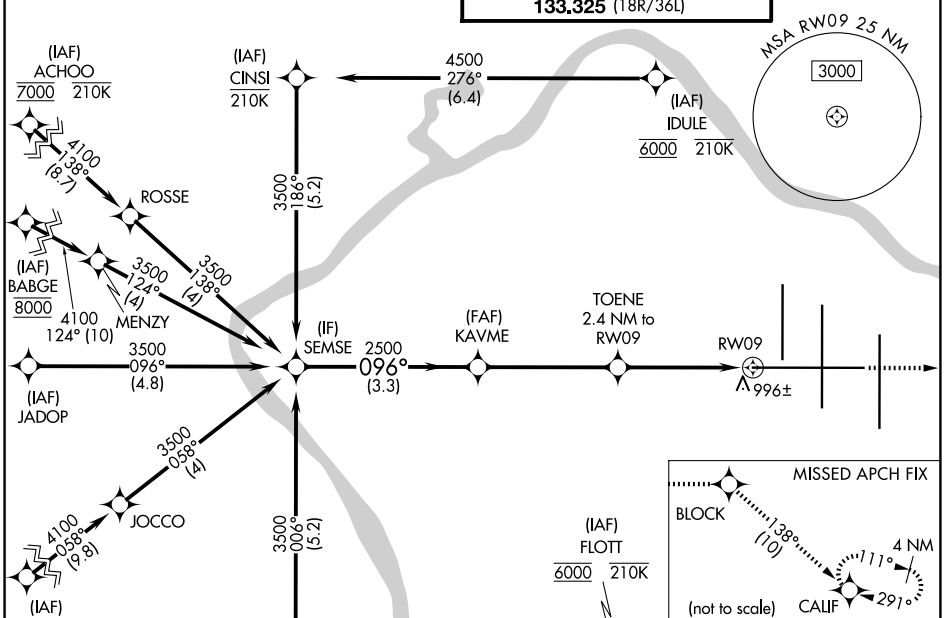
RNP APCH - GPS.

▼ For uncompensated Baro-VNAV systems, LNAV/VNAV NA below -13°C or above 54°C. For inop ALS, increase LNAV/VNAV all Cats visibility to RVR 5500 and LNAV Cat C and D visibility to RVR 5500.

MALSR 

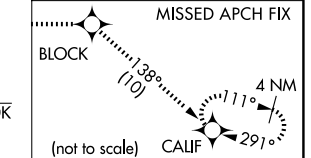
MISSED APPROACH: Climb to 3000 direct BLOCK and on track 138° to CALIF and hold.

D-ATIS 134.375	CINCINNATI APP CON 119.7 363.15 (090°-269°) 123.875 363.15 (270°-089°)	CINCINNATI TOWER 118.975 360.85 (18L/36R) 118.3 (9/27, 18C/36C) 133.325 (18R/36L)	GND CON 121.7
--------------------------	--	---	-------------------------

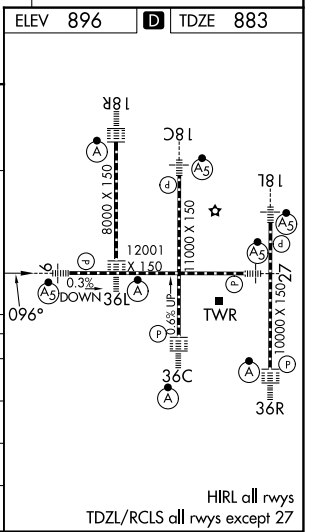
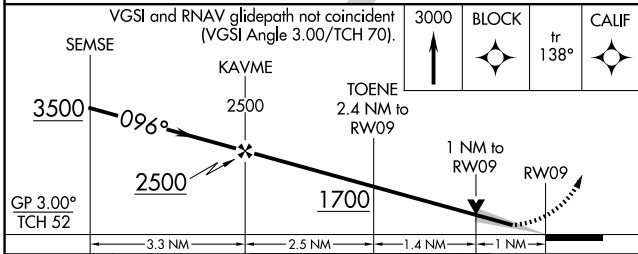


SE-1, 16 APR 2026 to 14 MAY 2026

SE-1, 16 APR 2026 to 14 MAY 2026



ELEV 896	D TDZE 883
----------	-------------------



CATEGORY	A	B	C	D
LPV DA	1083/18		200 (200-½)	
LNAV/VNAV DA	1260/35		377 (400-¾)	
LNAV MDA	1260/24	377 (400-½)	1260/35	377 (400-¾)
CIRCLING	1460-1	564 (600-1)	1560-1¾ 664 (700-1¾)	1560-2 664 (700-2)

HIRL all rwys
TDZL/RCLS all rwys except 27