

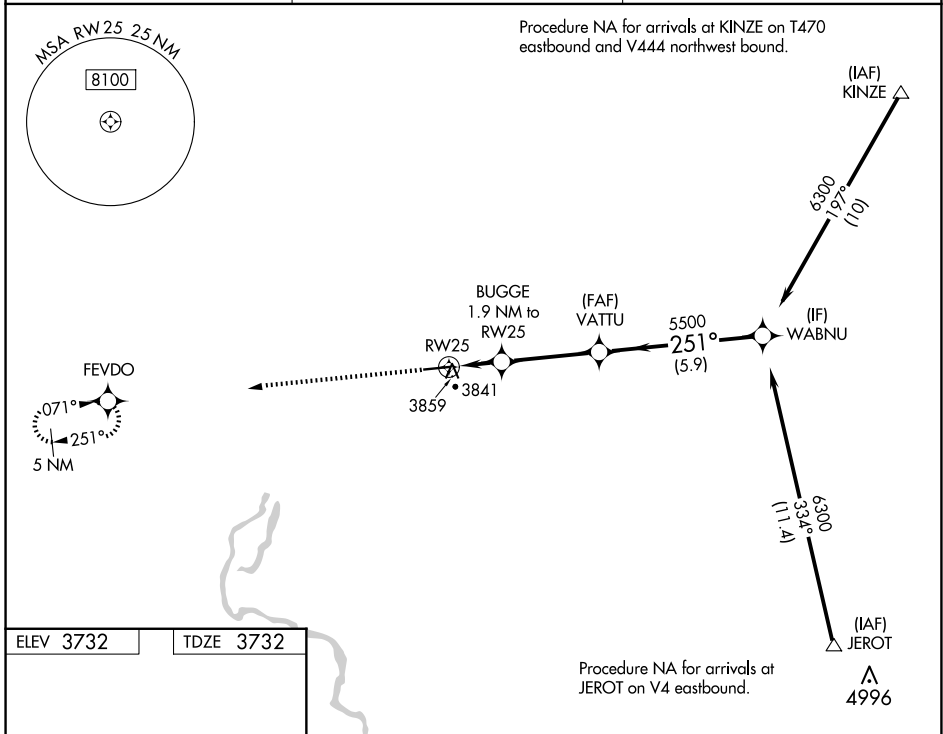
WAAS CH <b>45909</b> <b>W25A</b>	APP CRS <b>251°</b>	Rwy Idg <b>5371</b> TDZE <b>3732</b> Apt Elev <b>3732</b>
--	------------------------	---

# RNAV (GPS) RWY 25

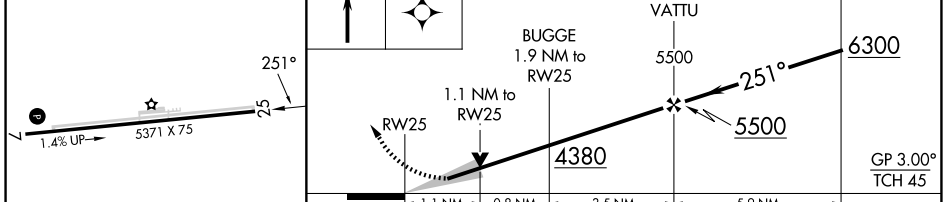
GOODING MUNI (GNG)

RNP APCH - GPS.	MISSED APPROACH: Climb to 5900 direct FEVDO and hold.
<p>▼ For uncompensated Baro-VNAV systems, LNAV/VNAV NA below -22°C or above 54°C.</p> <p>▲</p>	

AWOS-3PT <b>124.175</b>	SALT LAKE CENTER <b>118.05 363.0</b>	UNICOM <b>122.8 (CTAF) 0</b>
----------------------------	---	---------------------------------



ELEV 3732	TDZE 3732
-----------	-----------



CATEGORY	A	B	C	D
LPV DA		3982-3/4	250 (300-3/4)	
LNAV/VNAV DA		4020-7/8	288 (300-7/8)	
LNAV MDA	4120-1	388 (400-1)	4120-1 1/8	388 (400-1 1/8)

NW-1, 16 APR 2026 to 14 MAY 2026

NW-1, 16 APR 2026 to 14 MAY 2026