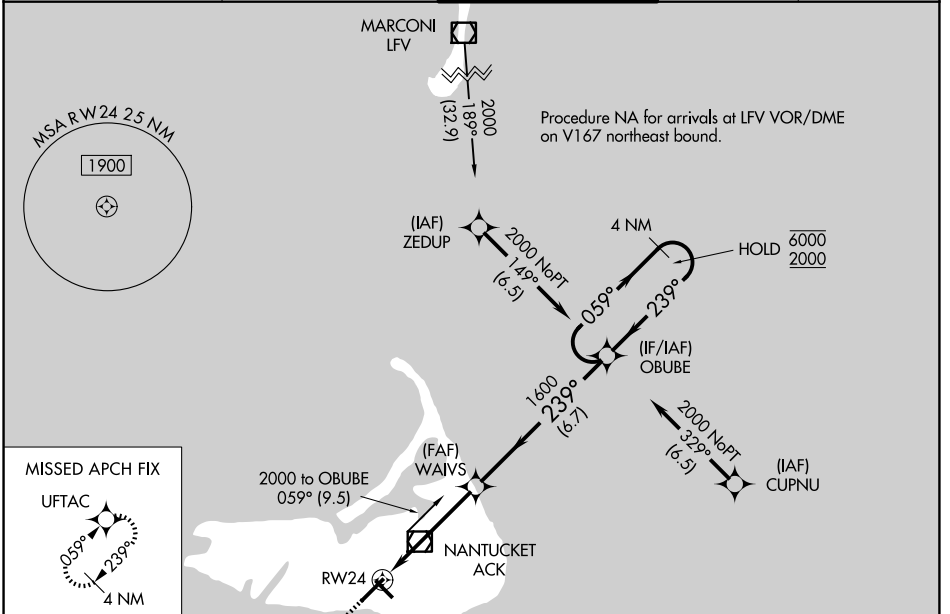


WAAS CH <b>93612</b> <b>W24A</b>	APP CRS <b>239°</b>	Rwy Ldg TDZE Apt Elev	<b>6303</b> <b>47</b> <b>47</b>
--	------------------------	-----------------------------	---------------------------------------

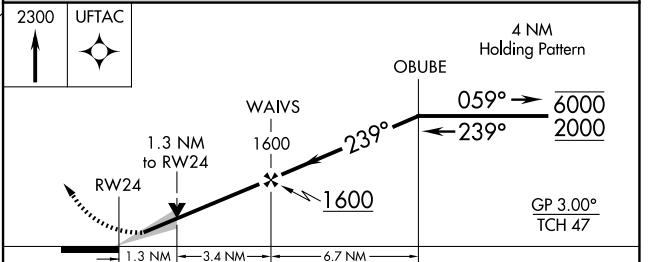
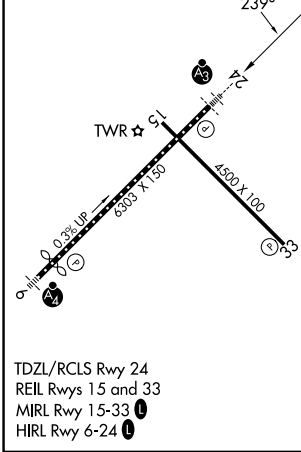
# RNAV (GPS) RWY 24

NANTUCKET MEML (ACK)

RNP APCH - GPS.		SSALR		MISSED APPROACH: Climb to 2300 direct UFTAC and hold.	
<p>▼ For uncompensated Baro-VNAV systems, LNAV/VNAV NA below -12°C or above 54°C. ▲ For inop ALS increase LNAV/VNAV all Cats visibility to RVR 4000 and LNAV Cats C/D visibility to 1½ SM.</p>					
ATIS <b>127.5</b>	BOSTON APP CON <b>126.1 318.1</b>	NANTUCKET TOWER * <b>118.3 (CTAF) 0</b>	GND CON <b>132.5</b>	UNICOM <b>122.95</b>	



ELEV 47	<b>D</b>	TDZE 47
---------	----------	---------



CATEGORY	A	B	C	D
LPV DA		247/18	200 (200-½)	
LNAV/VNAV DA		300/24	253 (300-½)	
LNAV MDA	520/24	473 (500-½)	520/50	473 (500-1)
CIRCLING	520-1	473 (500-1)	720-2 673 (700-2)	720-2¼ 673 (700-2¼)

NE-1, 16 APR 2026 to 14 MAY 2026

NE-1, 16 APR 2026 to 14 MAY 2026