

LOC/DME I-ZK 109.9 Chan 36	APP CRS 222°	Rwy Ldg 7502 TDZE 933 Apt Elev 962
------------------------------------------------	------------------------	---------------------------------------------------------------

ILS or LOC RWY 22

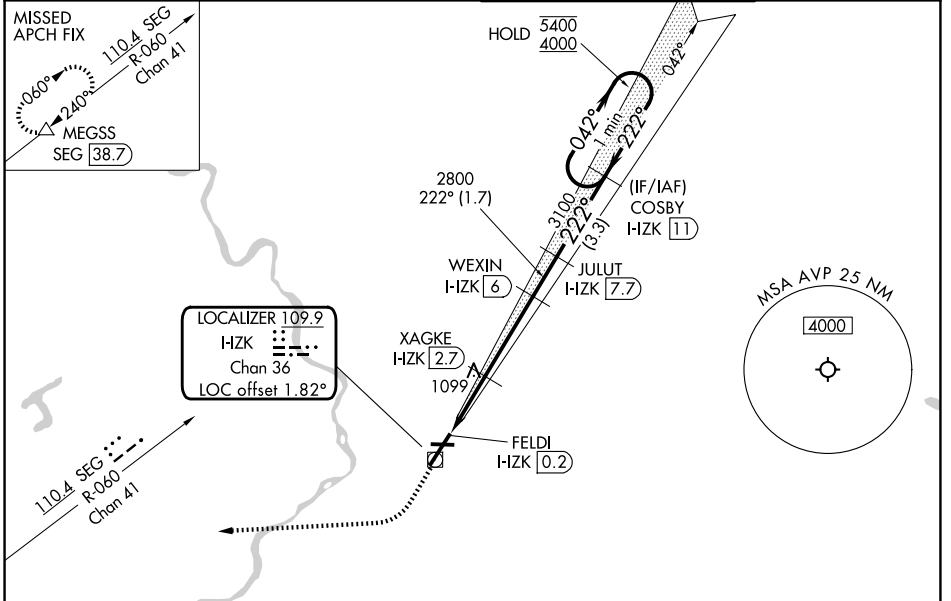
WILKES-BARRE/SCRANTON INTL (AVP)

RADAR required for procedure entry. DME required.

⚠ Circling NA for Cats C and D southeast of Rwy 4-22.
Circling Rwy 28 NA at night.

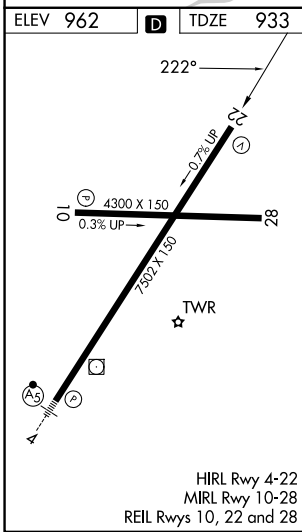
MISSED APPROACH: Climb to 1500 then climbing right turn to 4000 on heading 275° and SEG VOR/DME R-060 to MEGSS/ SEG 38.7 DME and hold.

ATIS 135.75	WILKES-BARRE APP CON 120.95 256.7 126.3 256.7 (280°-100°) (101°-279°)	WILKES-BARRE TOWER 120.1 257.8	GND CON 121.9
-----------------------	----------------------------------------------------------------------------------------------	------------------------------------------	-------------------------



NE-4, 16 APR 2026 to 14 MAY 2026

NE-4, 16 APR 2026 to 14 MAY 2026



1500	4000	SEG R-060	MEGSS	VGSI and ILS glidepath not coincident (VGSI Angle 3.00/TCH 54).	One Minute Holding Pattern
↑	hdg 275°				
				JULUT I-ZK (7)	COSBY I-ZK (11)
				XAGKE I-ZK (2.7)	
				FELDI I-ZK (0.2)	
				1740	2800
				1.4 NM	1.1
				3.3 NM	1.7 NM
				3.3 NM	
CATEGORY	A	B	C	D	
S-ILS 22		1201/45	268 (300-7%)		
S-LOC 22	1400/55	467 (500-1)	1400-1 ³ / ₈	467 (500-1 ³ / ₈)	
CIRCLING	1840-1 ¹ / ₄ 878 (900-1 ¹ / ₄)	1980-1 ¹ / ₂ 1018 (1100-1 ¹ / ₂)	1980-3 1018 (1100-3)	2280-3 1318 (1400-3)	