


LOC/DME I-AVP 109.9 Chan 36	APP CRS 045°	Rwy Ldg TDZE Apt Elev 7502 962 962
-------------------------------------------------	------------------------	------------------------------------------------------------------------

ILS or LOC RWY 4

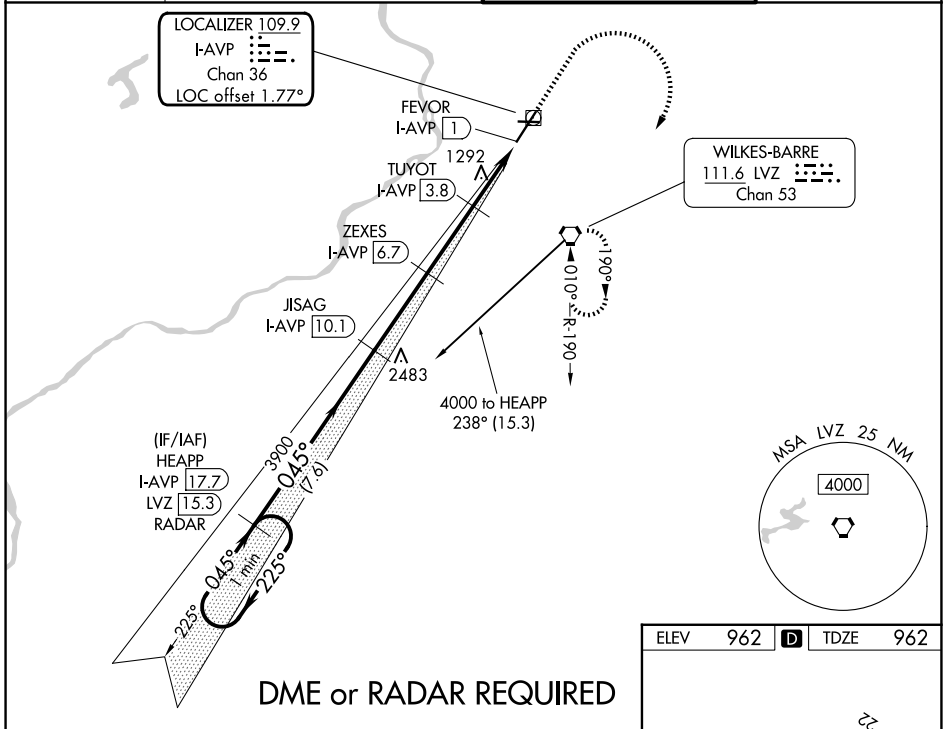
WILKES-BARRE/SCRANTON INTL (AVP)

⚠ Circling to Rwy 10, 28 NA at night. Circling NA for Cats C and D southeast of Rwy 4-22. Autopilot coupled approach NA below 2530. DME required. For inop ALS, increase S-ILS 4 all Cats visibility to RVR 5000, and S-LOC 4 Cat C/D visibility to 1½ SM.

MALSR 

MISSED APPROACH: Climb to 3000 then climbing right turn to 4000 direct LVZ VORTAC and hold.

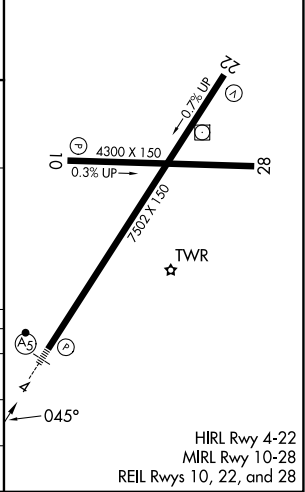
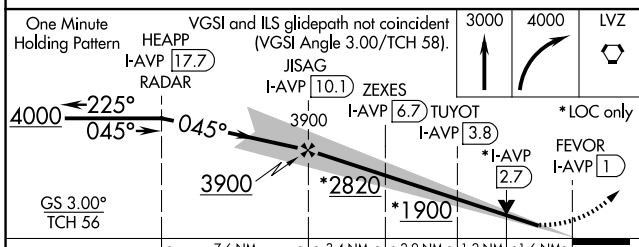
ATIS 135.75	WILKES-BARRE APP CON 120.95 256.7 (280°-100°) 126.3 256.7 (101°-279°)	WILKES-BARRE TOWER 120.1 257.8	GND CON 121.9
-----------------------	-------------------------------------------------------------------------------------------	------------------------------------------	-------------------------



NE-4, 16 APR 2026 to 14 MAY 2026

NE-4, 16 APR 2026 to 14 MAY 2026

ELEV 962	D	TDZE 962
----------	----------	----------



CATEGORY	A	B	C	D
S-ILS 4	1262/24		300 (300-½)	
S-LOC 4	1540/24	578 (600-½)	1540-1¼	578 (600-1¼)
CIRCLING	1840-1¼ 878 (900-1¼)	1980-1½ 1018 (1100-1½)	1980-3 1018 (1100-3)	2280-3 1318 (1400-3)