

WAAS CH 69213 W22A	APP CRS 224°	Rwy Ldg 7502 TDZE 933 Apt Elev 962
----------------------------------------	------------------------	---------------------------------------------------------------

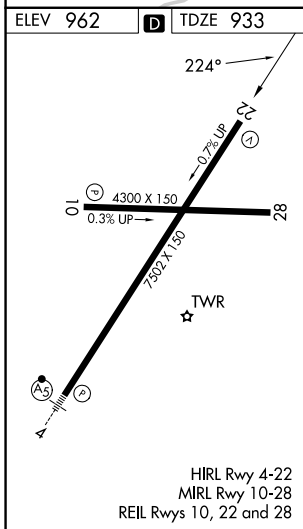
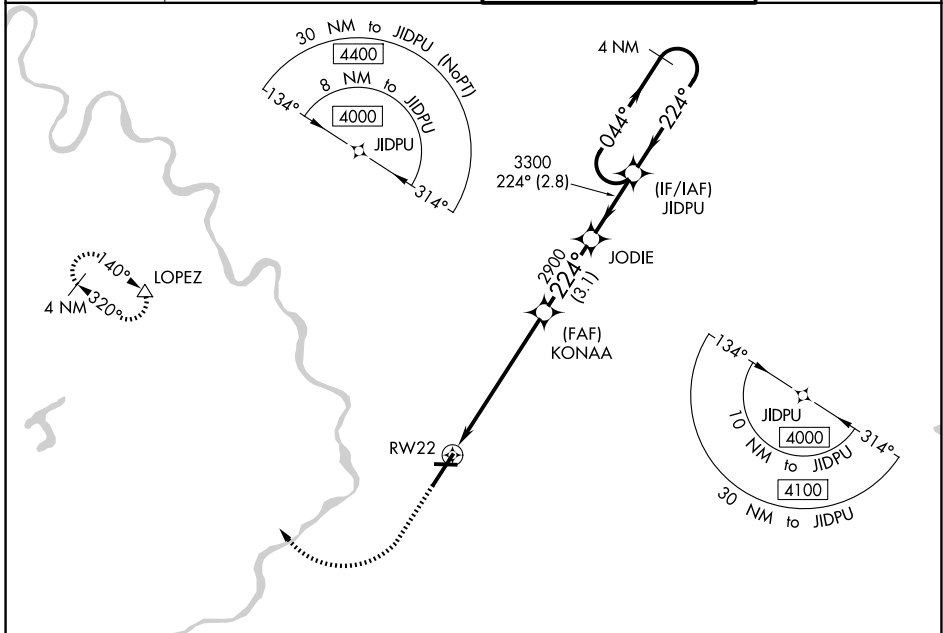
RNAV (GPS) RWY 22

WILKES-BARRE/SCRANTON INTL (AVP)

⚠ Night landing: Rwy 10, 28 NA. For uncompensated Baro-VNAV systems, LNAV/VNAV NA below -17°C (2°F) or above 54°C (130°F). When local altimeter setting not received, procedure NA. Circling NA for Cats C and D southeast of Rwy4-22. DME/DME RNP-0.3 NA.

⚠ MISSED APPROACH: Climb to 1900 then climbing right turn to 4000 direct LOPEZ and hold.

ATIS 135.75	WILKES-BARRE APP CON 120.95 256.7 (280°-100°) 126.3 256.7 (101°-279°)	WILKES-BARRE TOWER 120.1 257.8	GND CON 121.9
-----------------------	-------------------------------------------------------------------------------------------	------------------------------------------	-------------------------



ELEV 962	D	TDZE 933		
1900	4000	LOPEZ	VGSI and RNAV glidepath not coincident (VGSI Angle 3.00/TCH 54).	4 NM Holding Pattern
*LNAV only.		KONAA	JODIE	JIDPU
* 1.8 NM to RWY 22		2900	2900	4000
1.8 NM		4.3 NM	3.1 NM	2.8 NM
CATEGORY	A	B	C	D
LPV DA		1178/40	245 (200-¾)	
LNAV/VNAV DA		1392-1½	459 (500-1½)	
LNAV MDA	1500/55	567 (600-1)	1500-¾	567 (600-1¾)
CIRCLING	1840-1¼ 878 (900-1¼)	1980-1½ 1018 (1100-1½)	1980-3 1018 (1100-3)	2280-3 1318 (1400-3)

NE-4, 16 APR 2026 to 14 MAY 2026

NE-4, 16 APR 2026 to 14 MAY 2026