

| | | |
|--|------------------------|---|
| WAAS CH 62813 W04A | APP CRS 044° | Rwy Ldg 7502 TDZE 962 Apt Elev 962 |
|--|------------------------|---|

RNAV (GPS) RWY 4

WILKES-BARRE/SCRANTON INTL (A VP)

⚠ Circling to Rwy 10 and 28 NA at night. For uncompensated Baro-VNAV systems, LNAV/VNAV NA below -17°C (2°F) or above 54°C (130°F). When local altimeter setting not received, procedure NA. For inop MALS, increase LNAV Cats C/D visibility to 2 miles. Circling NA for Cats C and D southeast of Rwy 4-22. DME/DME RNP-0.3 NA. **RVR 1800 authorized with use of FD or AP or HUD to DA.

MALS

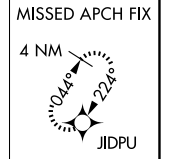
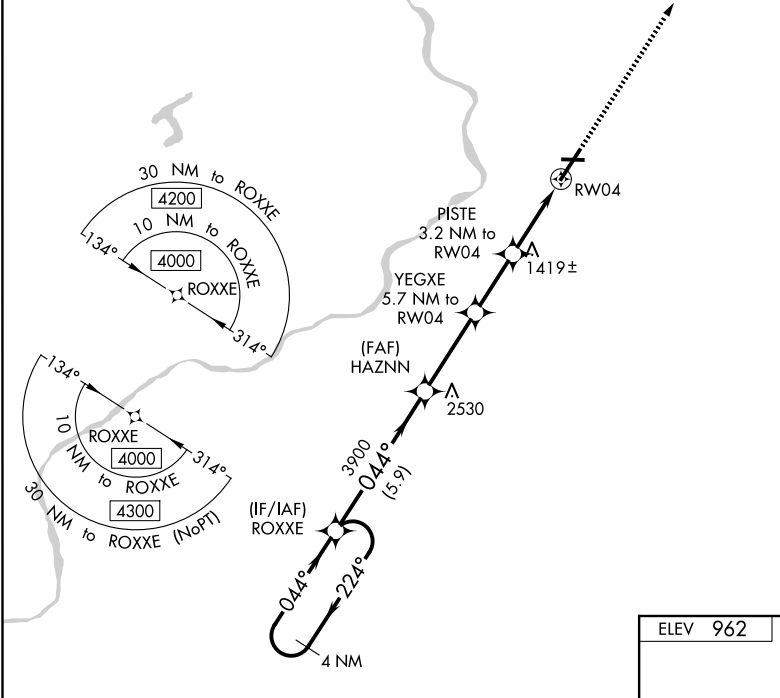
MISSED APPROACH:
Climb to 4000 direct
JIDPU and hold.

ATIS
135.75

WILKES-BARRE APP CON
120.95 256.7 (280°-100°)
126.3 256.7 (101°-279°)

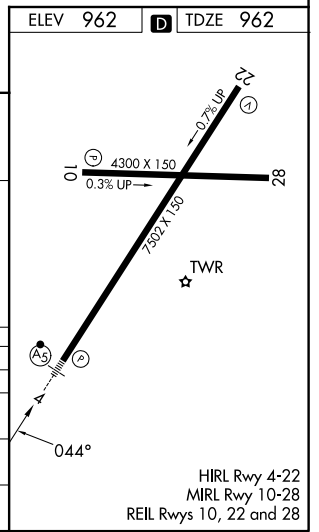
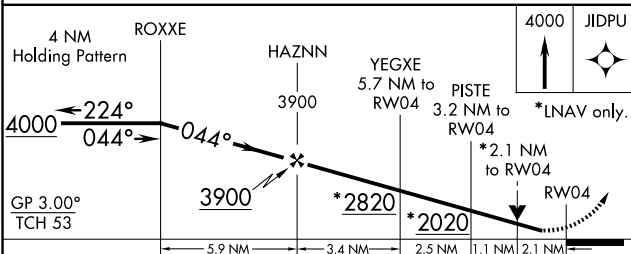
WILKES-BARRE TOWER
120.1 257.8

GND CON
121.9



NE-4, 16 APR 2026 to 14 MAY 2026

NE-4, 16 APR 2026 to 14 MAY 2026



| CATEGORY | A | B | C | D |
|--------------|-------------------------|---------------------------|-------------------------|-------------------------|
| LPV DA ** | 1162/24 | | 200 (200-½) | |
| LNAV/VNAV DA | 1618-1¾ | | 656 (700-1¾) | |
| LNAV MDA | 1680/24 | 718 (800-½) | 1680-1½ | 718 (800-1½) |
| CIRCLING | 1840-1¼ 878 (900-1¼) | 1980-1½ 1018 (1100-1½) | 1980-3 1018 (1100-3) | 2280-3 1318 (1400-3) |

HIRL Rwy 4-22
MIRL Rwy 10-28
REIL Rws 10, 22 and 28