

RNAV 1 - DME/DME/IRU or GPS.  
RADAR required.

(PEHTY, RKSTR4) 24305

AL-662 (FAA)  
Transition Routes

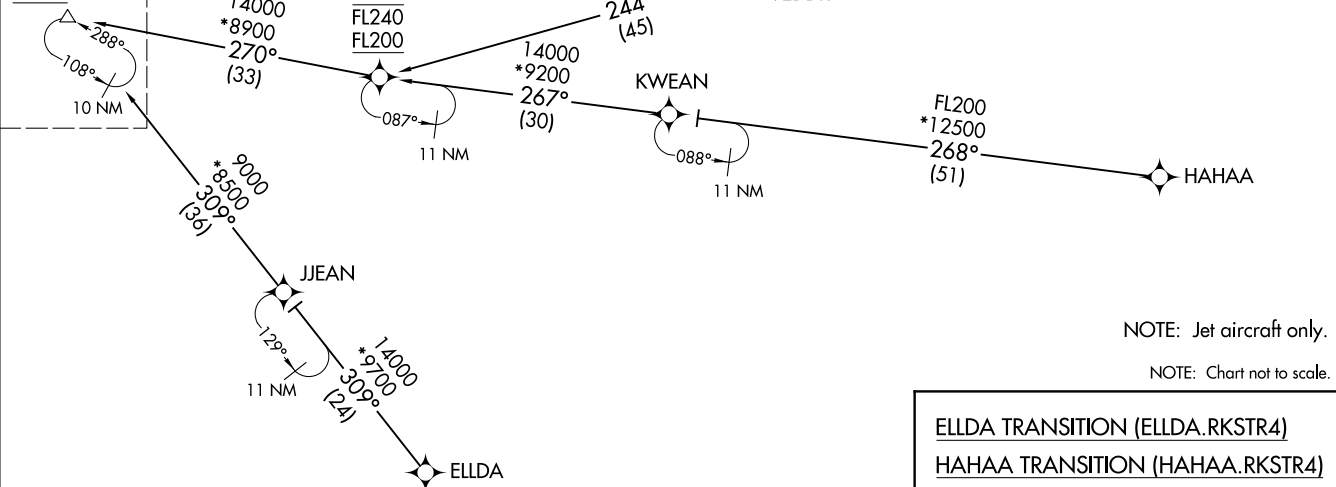
HARRY REID INTL (LAS)  
LAS VEGAS, NEVADA

LAS VEGAS APP CON  
119.775 282.2  
D-ATIS  
132.4  
LAS VEGAS TOWER  
118.75 257.8 (Rwys 1L/19R, 1R/19L)  
119.9 257.8 (Rwys 8L/26R, 8R/26L)



See following page  
for arrival routes.

PEHTY	
16000	250K
14000	



(CONTINUED ON FOLLOWING PAGE)

- ELDA TRANSITION (ELDA.RKSTR4)
- HAHA TRANSITION (HAHA.RKSTR4)
- SQIRE TRANSITION (SQIRE.RKSTR4)

NOTE: Jet aircraft only.  
NOTE: Chart not to scale.

RKSTR FOUR ARRIVAL (RNAV)  
(PEHTY, RKSTR4) 31OCT24

Transition Routes

LAS VEGAS, NEVADA  
HARRY REID INTL (LAS)

RNAV 1 - DME/DME/IRU or GPS.  
RADAR required.

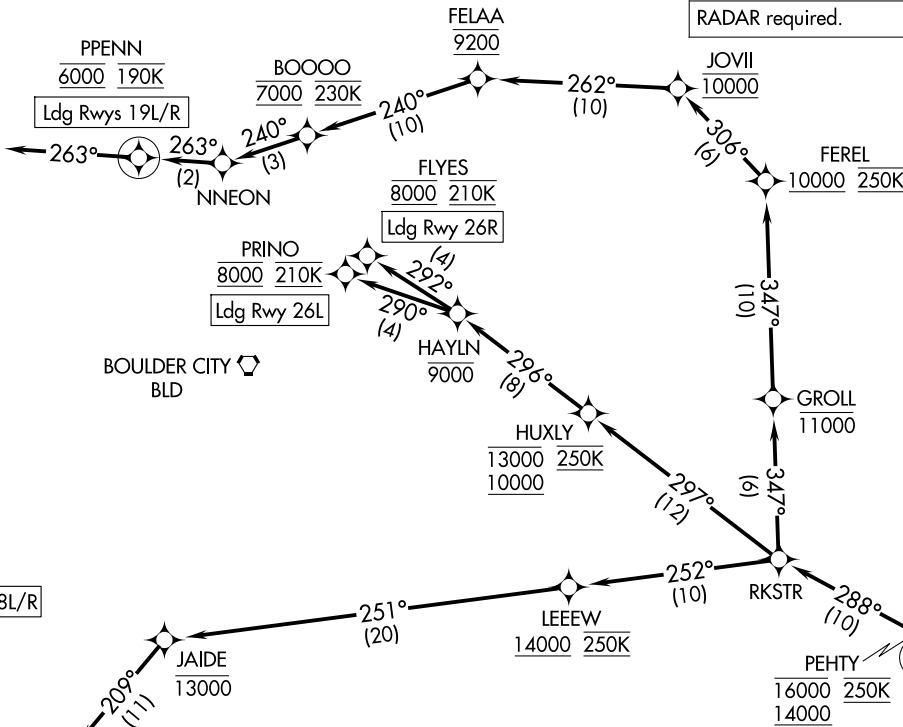
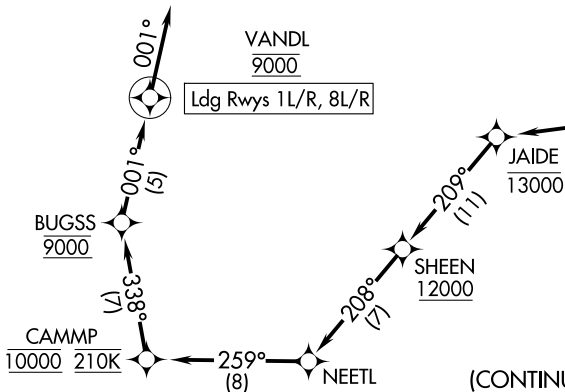
RKSTR FOUR ARRIVAL (RNAV) Arrival Routes  
(PEHTY, RKSTR4) 310CT24 LAS VEGAS, NEVADA HARRY REID INTL (LAS)

LAS VEGAS APP CON  
119.775 282.2  
D-ATIS  
132.4  
LAS VEGAS TOWER  
118.75 257.8 (Rwys 1L/19R, 1R/19L)  
119.9 257.8 (Rwys 8L/26R, 8R/26L)

LAS VEGAS LAS

BOULDER CITY BLD

VANDL  
9000  
Ldg Rwys 1L/R, 8L/R



(CONTINUED ON FOLLOWING PAGE)

NOTE: Jet aircraft only.  
NOTE: Chart not to scale.

(PEHTY, RKSTR4) 24305  
RKSTR FOUR ARRIVAL (RNAV) Arrival Routes  
AL-662 (FAA)  
HARRY REID INTL (LAS)  
LAS VEGAS, NEVADA

# RKSTR FOUR ARRIVAL (RNAV)

## ARRIVAL ROUTE DESCRIPTION

From PEHTY on track 288° to RKSTR.

LANDING RUNWAYS 1L/R, 8L/R: From RKSTR on track 252° to cross LEEEW at or above 14000 and at 250K, then on track 251° to cross JAIDE at or below 13000, then on track 209° to cross SHEEN at or above 12000, then on track 208° to NEETL, then on track 259° to cross CAMMP at 10000 and at 210K, then on track 338° to cross BUGSS at 9000, then on track 001° to cross VANDL at 9000, then on track 001°. Expect RADAR vectors to final approach course.

LANDING RUNWAYS 19L/R: From RKSTR on track 347° to cross GROLL at or below 11000, then on track 347° to cross FEREL at or above 10000 and at 250K, then on track 306° to cross JOVII at 10000, then on track 262° to cross FELAA at 9200, then on track 240° to cross BOOOO at 7000 and at 230K, then on track 240° to NNEON, then on track 263° to cross PPENN at 6000 and at 190K, then on track 263°. Expect RADAR vectors to final approach course.

LANDING RUNWAY 26L: From RKSTR on track 297° to cross HUXLY between 10000 and 13000 and at 250K, then on track 296° to cross HAYLN at or below 9000, then on track 290° to cross PRINO at 8000 and at 210K. Expect ILS or LOC RWY 26L approach.

LANDING RUNWAY 26R: From RKSTR on track 297° to cross HUXLY between 10000 and 13000 and at 250K, then on track 296° to cross HAYLN at or below 9000, then on track 292° to cross FLYES at 8000 and at 210K. Expect ILS or LOC RWY 26R approach.

### LOST COMMUNICATIONS

LANDING RUNWAYS 1L/R, 8L/R: At VANDL proceed on the RNAV (GPS) RWY 1R approach, if unable maintain 8100 direct BLD VORTAC and then on the ILS or LOC RWY 26L approach.

LANDING RUNWAY 19L: At PPENN proceed on the RNAV (RNP) RWY 19L approach, if unable, proceed via last track to intercept the final approach course; if unable, maintain 7000 direct LAS VORTAC then direct BLD VORTAC and then on the ILS or LOC RWY 26L approach.

SW-4, 16 APR 2026 to 14 MAY 2026

SW-4, 16 APR 2026 to 14 MAY 2026