

RNAV 1 - DME/DME/IRU or GPS.
RADAR required.

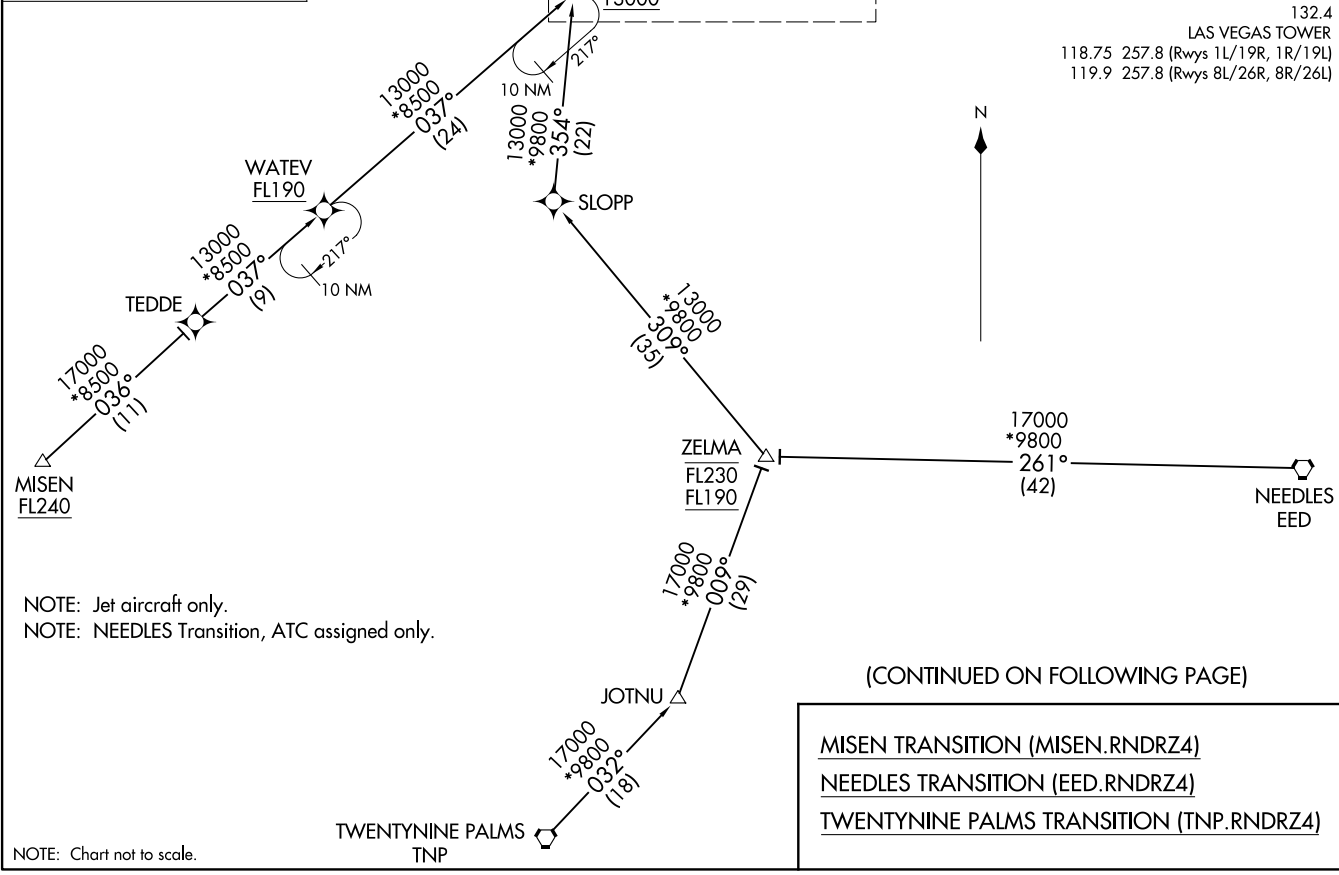
RNDRZ
16000 250K
13000
See following page
for arrival routes

LAS VEGAS APP CON
125.025 379.15
D-ATIS
132.4
LAS VEGAS TOWER
118.75 257.8 (Rwys 1L/19R, 1R/19L)
119.9 257.8 (Rwys 8L/26R, 8R/26L)

RNDRZ FOUR ARRIVAL (RNAV) (RNDRZ.RNDRZ4) 07AUG25

Transition Routes

LAS VEGAS, NEVADA
HARRY REID INTL (LAS)



(CONTINUED ON FOLLOWING PAGE)

- MISEN TRANSITION (MISEN.RNDRZ4)
- NEEDLES TRANSITION (EED.RNDRZ4)
- TWENTYNINE PALMS TRANSITION (TNP.RNDRZ4)

(RNDRZ.RNDRZ4) 25219
RNDRZ FOUR ARRIVAL (RNAV) Transition Routes

AL-662 (FAA)

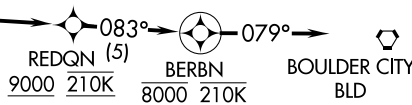
HARRY REID INTL (LAS)
LAS VEGAS, NEVADA

LAS VEGAS APP CON
125.025 379.15
D-ATIS
132.4
LAS VEGAS TOWER
118.75 257.8 (Rwys 1L/19R, 1R/19L)
119.9 257.8 (Rwys 8L/26R, 8R/26L)

LAS VEGAS LAS

RNAV 1 - DME/DME/IRU or GPS.
RADAR required.

ENNVY
11000

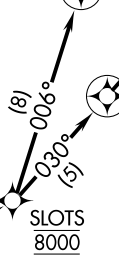


Ldg Rwys 19L/R, 26L/R

YAGGR
8000 210K
Ldg Rwys 8L/R

ROAMN
8000 210K
Ldg Rwys 1L/R

BUETY
13000



SLOTS
8000

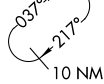
GRMMA

HIMIT
8800

RUMLY
13000
10000



RNDRZ
16000 250K
13000



RNDRZ FOUR ARRIVAL (RNAV) Arrival Routes
(RNDRZ, RNDRZ4) 07AUG25
LAS VEGAS, NEVADA
HARRY REID INTL (LAS)

(RNDRZ, RNDRZ4) 25219
RNDRZ FOUR ARRIVAL (RNAV) Arrival Routes
AL-662 (FAA)
HARRY REID INTL (LAS)
LAS VEGAS, NEVADA

NOTE: Jet aircraft only.
NOTE: NEEDLES Transition, ATC assigned only.

(CONTINUED ON FOLLOWING PAGE)

NOTE: Chart not to scale.

ARRIVAL ROUTE DESCRIPTION

LANDING RUNWAYS 1L/R: From RNRZ on track 048° to cross RUMLY between 10000 and 13000, then on track 048° to cross HIMIT at or above 8800, then on track 048° to cross SLOTS at 8000, then on track 030° to cross ROAMN at 8000 and at 210K, then on track 030°. Expect RADAR vectors to final approach course.

LANDING RUNWAYS 8L/R: From RNRZ on track 048° to cross RUMLY between 10000 and 13000, then on track 048° to cross HIMIT at or above 8800, then on track 048° to cross SLOTS at 8000, then on track 006° to cross YAGGR at 8000 and at 210K, then on track 005°. Expect RADAR vectors to final approach course.

LANDING RUNWAYS 19L/R, 26L/R: From RNRZ on track 037° to GRMMA, then on track 019° to cross BUETY at or above 13000, then on track 019° to cross ENNVY at or above 11000, then on track 082° to cross REDQN at or above 9000 and at 210K, then on track 083° to cross BERBN at 8000 and at 210K, then on track 079°. Expect RADAR vectors to final approach course.

LOST COMMUNICATIONS

LANDING RUNWAY 8R: At YAGGR proceed on the RNAV (RNP) RWY 8R approach, if unable, proceed visually to intercept the final approach course; if unable, maintain 8000 proceed direct LAS VORTAC then maintain 7000 proceed to BLD VORTAC and then on the ILS or LOC RWY 26L approach.

SW-4, 16 APR 2026 to 14 MAY 2026

SW-4, 16 APR 2026 to 14 MAY 2026