

LOC/DME H-LGU	APP CRS	Rwy Ldg	<b>9020</b>
<b>109.15</b>	<b>172°</b>	TDZE	<b>4457</b>
Chan <b>28(Y)</b>		Apt Elev	<b>4457</b>

# ILS or LOC/DME RWY 17

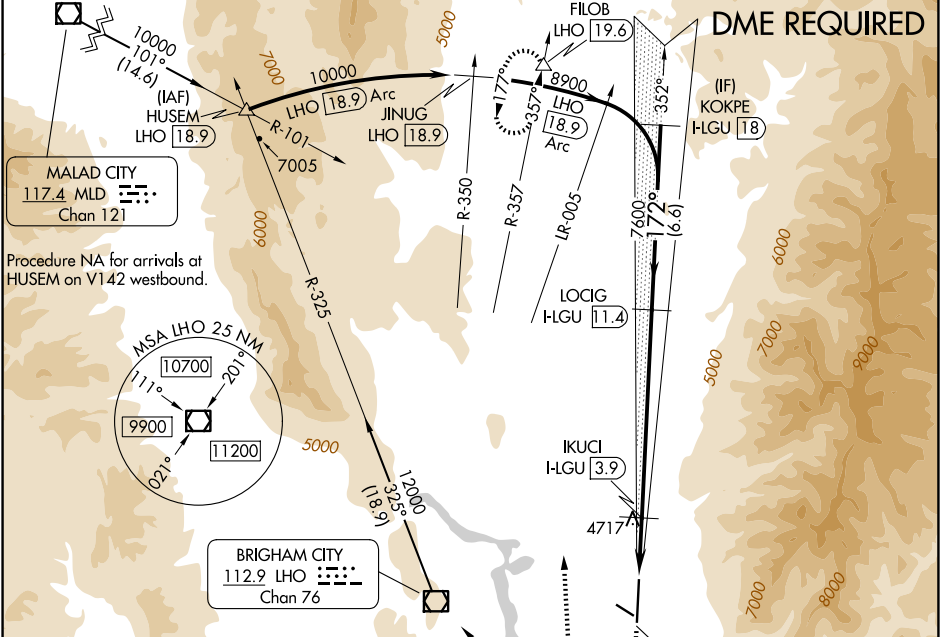
LOGAN-CACHE (LGU)

**NA** Circling NA east of Rwy 17-35.  
**NA** Circling Rwy 10, 28 NA at night.  
**-14°C** Rwy 17 helicopter visibility reduction below 3/4 SM NA.

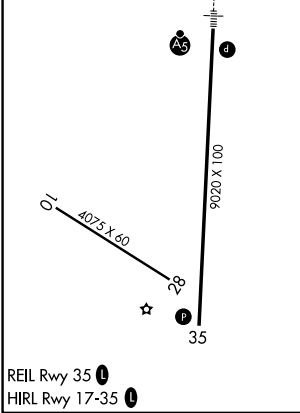
**MALS**

**MISSED APPROACH:** Climb to 5800 then climbing right turn to 12000 on heading 345° and on LHO VOR/DME R-357 to FIOB INT/LHO 19.6 DME and hold, continue climb-in-hold to 12000.

ASOS	SALT LAKE CENTER	UNICOM
<b>135.275</b>	<b>127.7 354.125</b>	<b>122.8 (CTAF) 0</b>



ELEV 4457	<b>D</b>	TDZE 4457
	172°	



5800	12000	LHO R-357	FIOB	Use I-LGU DME when on localizer course.
				LOCIG H-LGU 11.4
				KOKPE H-LGU 18
				IKUCI H-LGU 3.9
				I-LGU 1.7
				H-LGU 3.3
				7600
				5220
				8900
				172°
				GS 3.00° TCH 50

CATEGORY	A	B	C	D
S-ILS 17		4771-3/4	314 (400-3/4)	
S-LOC 17	5020-3/4	563 (600-3/4)	5020-1/4	563 (600-1/4)
CIRCLING	5020-1	563 (600-1)	5080-1 3/4 623 (700-1 3/4)	5080-2 623 (700-2)

SW-4, 16 APR 2026 to 14 MAY 2026

SW-4, 16 APR 2026 to 14 MAY 2026