

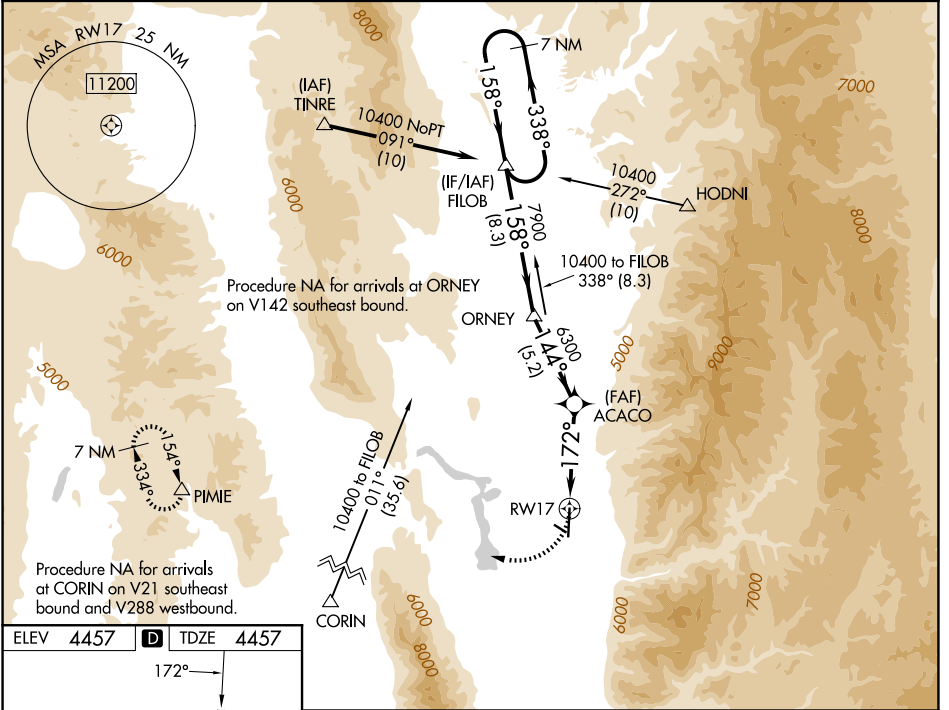
APP CRS	Rwy Ldg	<b>9020</b>
<b>172°</b>	TDZE	<b>4457</b>
	Apt Elev	<b>4457</b>

# RNAV (GPS) RWY 17

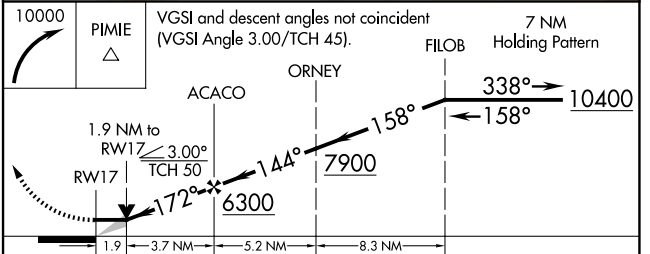
LOGAN-CACHE (LGU)

  	DME/DME RNP-0.3 NA. Circling NA east of Rwy 17-35. Night Landing: Rwy 10-28 NA. Inop table does not apply to LNAV Cats C/D. *Missed approach requires minimum climb of 310 feet per NM to 7700.	MALSR 	MISSED APPROACH: Climbing right turn to 10000 direct PIMIE and hold, continue climb-in-hold to 10000.
----------	--	-----------	--

ASOS <b>135.275</b>	SALT LAKE CENTER <b>127.7 354.125</b>	UNICOM <b>122.8 (CTAF)</b>
------------------------	--	-------------------------------



ELEV	<b>4457</b>		TDZE	<b>4457</b>
172°				



CATEGORY	A	B	C	D
*LNAV MDA	5100-1/2	643 (700-1/2)	5100-1 3/8	643 (700-1 3/8)
LNAV MDA	5800-3/4 1343 (1400-3/4)	5800-1 1343 (1400-1)	5800-3	1343 (1400-3)
CIRCLING	5800-1 1/4 1343 (1400-1 1/4)	5800-1 1/2 1343 (1400-1 1/2)	5800-3	1343 (1400-3)

SW-4, 16 APR 2026 to 14 MAY 2026

SW-4, 16 APR 2026 to 14 MAY 2026