

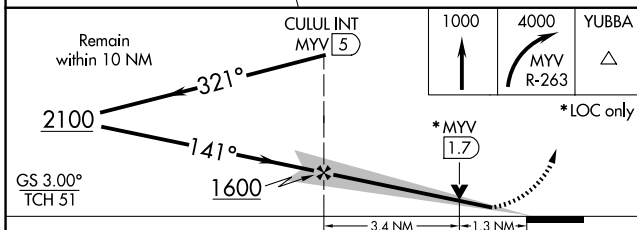
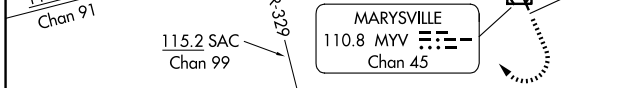
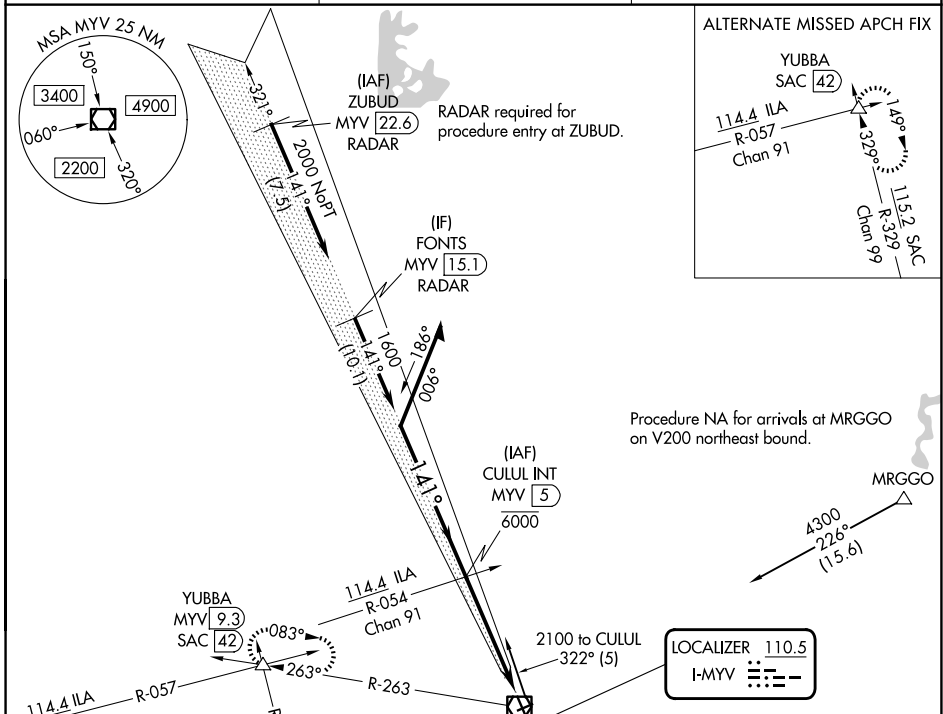
LOC I-MYV 110.5	APP CRS 141°	Rwy Ldg 6007 TDZE 64 Apt Elev 64
---------------------------	------------------------	---

ILS or LOC RWY 14

YUBA COUNTY (MYV)

<p>NA Circling Rwy 5, 23 NA at night. Autopilot coupled approach NA below 695.</p>	<p>MALSR</p>	<p>MISSED APPROACH: Climb to 1000 then climbing right turn to 4000 on MYV VOR/DME R-263 to YUBBA INT/ MYV 9.3 DME and hold, continue climb in hold to 4000.</p>
---	--------------	---

ASOS 118.475	NORCAL APP CON 125.4 259.1	UNICOM 123.05 (CTAF)
------------------------	--------------------------------------	--------------------------------



ELEV 64	TDZE 64
HIRL Rwy 14-32	
FAF to MAP 4.7 NM	
Knots	60 90 120 150 180
Min:Sec	4:42 3:08 2:21 1:53 1:34

CATEGORY	A	B	C	D
S-ILS 14	264-1/2 200 (200-1/2)			
S-LOC 14	520-1/2	456 (500-1/2)	520-7/8	456 (500-7/8)
CIRCLING	540-1	476 (500-1)	560-1 1/2	620-2
			496 (500-1 1/2)	556 (600-2)

SW-2, 16 APR 2026 to 14 MAY 2026

SW-2, 16 APR 2026 to 14 MAY 2026