

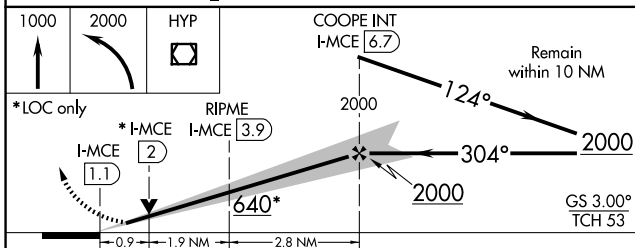
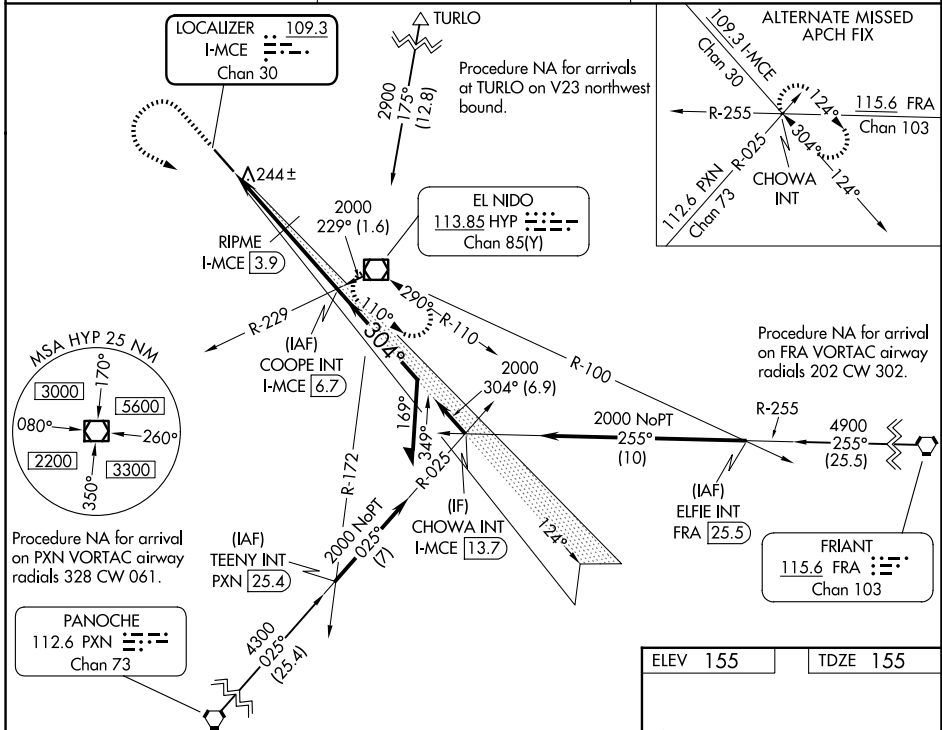
LOC/DME I-MCE 109.3 Chan 30	APP CRS 304°	Rwy Ldg TDZE Apt Elev	5914 155 155
--	------------------------	-----------------------------	---

ILS or LOC RWY 30

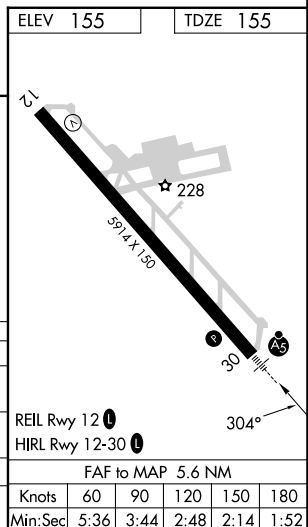
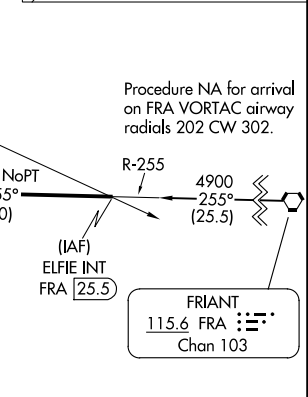
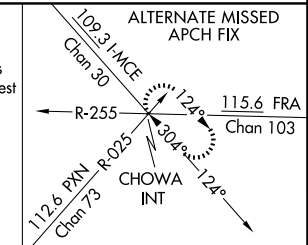
MERCED YOSEMITE RGNL (MCE)

<p>NA For inop ALS, increase S-LOC visibility to 1 SM.</p>	<p>MALSRL</p>	<p>MISSED APPROACH: Climb to 1000 then climbing left turn to 2000 direct HYP VOR/DME and hold.</p>
---	---------------	--

ASOS 132.175	NORCAL APP CON 120.95 269.45	UNICOM 122.7 (CTAF)
------------------------	--	-------------------------------



CATEGORY	A	B	C	D
S-ILS 30		355- ¹ / ₂	200 (200- ¹ / ₂)	
S-LOC 30	640- ³ / ₄	485 (500- ³ / ₄)	640-1	485 (500-1)
RIPME FIX MINIMUMS				
S-LOC 30		500- ³ / ₄	345 (400- ³ / ₄)	



SW-2, 16 APR 2026 to 14 MAY 2026

SW-2, 16 APR 2026 to 14 MAY 2026

REIL Rwy 12	1
HIRL Rwy 12-30	1
FAF to MAP 5.6 NM	
Knots	60 90 120 150 180
Min:Sec	5:36 3:44 2:48 2:14 1:52